

PREMIER DR[®] FIELD AND BRUSH MOWER

SAFETY & OPERATING INSTRUCTIONS



Serial No. _____

Order No. _____

Original Language

DR[®] Power Equipment
Toll-free phone: 1-800-DR-OWNER (376-9637)
Fax: 1-802-877-1213
Web site: www.DRpower.com

WARNING

Read and understand this manual and all instructions before operating this PREMIER DR FIELD AND BRUSH MOWER.

Table of Contents

Chapter 1: General Safety Rules	3
Chapter 2: Setting Up Your PREMIER DR FIELD and BRUSH MOWER	7
Chapter 3: Operating Your PREMIER DR FIELD and BRUSH MOWER	11
Chapter 4: Maintaining Your PREMIER DR FIELD and BRUSH MOWER	15
Chapter 5: Troubleshooting	20
Chapter 6: Parts Lists, Schematic Diagrams And Warranty	22

Conventions used in this manual

WARNING

This indicates a hazardous situation, which, if not avoided, could result in death or serious injury.

CAUTION

This indicates a hazardous situation, which, if not avoided, could result in minor or moderate injury.

NOTICE

This information is important in the proper use of your machine. Failure to follow this instruction could result in damage to your machine or property.

Serial Number and Order Number

A Serial Number is used to identify your machine and is located on the serial number label of your machine. For your convenience and ready reference, enter the Identification number in the space provided on the front cover of this manual. An Order Number is used to check and maintain your order history and is located on the upper left portion of your packing slip. For your convenience and ready reference, enter the order number in the space provided on the front cover of this manual.

Additional Information and Potential Changes

DR Power Equipment reserves the right to discontinue, change, and improve its products at any time without notice or obligation to the purchaser. The descriptions and specifications contained in this manual were in effect at printing. Equipment described within this manual may be optional. Some illustrations may not be applicable to your machine.

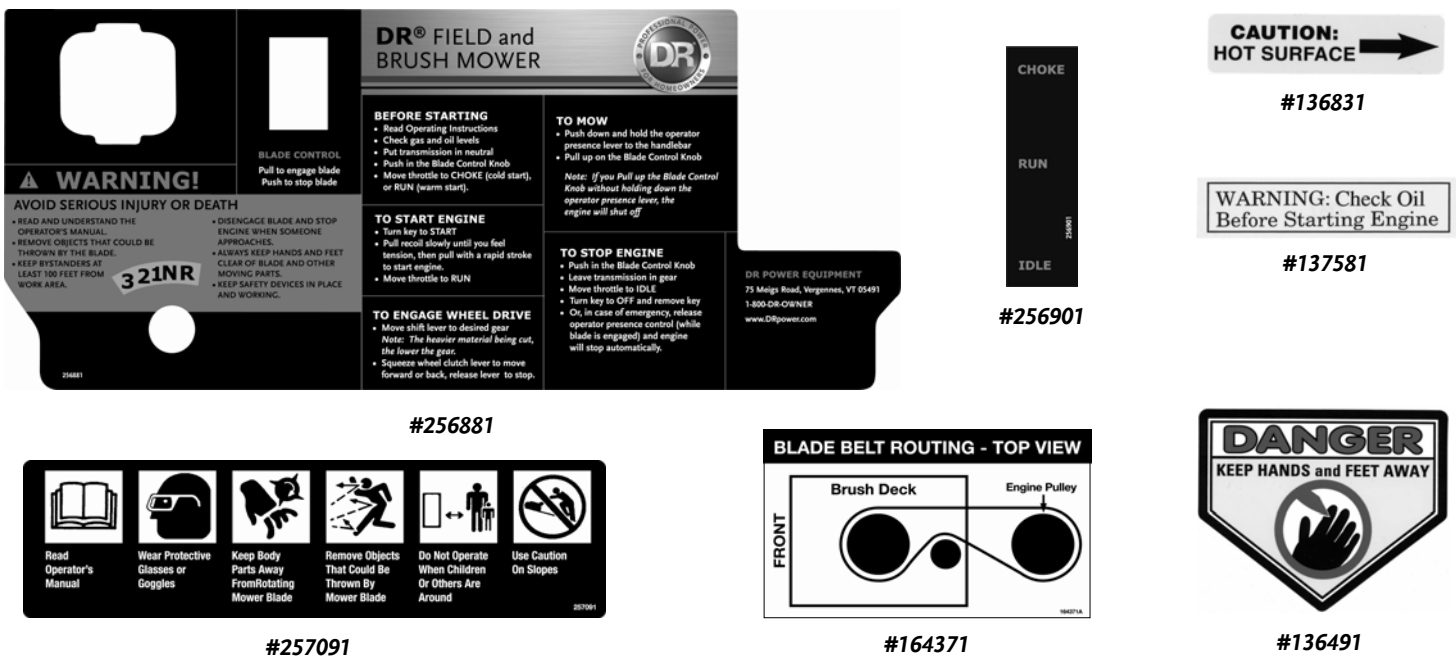
Chapter 1: General Safety Rules

! WARNING

Read this safety & operating instructions manual before you use the PREMIER DR FIELD and BRUSH MOWER. Become familiar with the operation and service recommendations to ensure the best performance from your machine. If you have any questions or need assistance, please contact us at www.DRpower.com or call toll free 1-800-DR-OWNER (376-9637) and one of our technical support representatives will be happy to help you.

Labels

Your PREMIER DR FIELD and BRUSH MOWER carries prominent labels as reminders for its proper and safe use. Shown below are copies of all the Safety and Information labels that appear on the equipment. Take a moment to study them and make a note of their location on your Mower as you set up and before you operate the unit. Replace damaged or missing safety and information labels immediately.



Protecting Yourself and Those Around You

! WARNING

This is a high-powered machine, with moving parts operating with high energy at high speeds. You must use proper clothing and safety gear when operating this machine to prevent or minimize the risk of severe injury. This machine can cut, and sever parts of your body if they become in contact with the moving blade. Always take the following precautions when operating this machine:

- Always wear protective goggles or safety glasses with side shields while using the backhoe to protect your eyes from possible thrown debris.
- Avoid wearing loose clothing or jewelry, which can catch on moving parts.
- We recommend wearing gloves while using the Mower. Be sure your gloves fit properly and do not have loose cuffs or drawstrings.
- Wear shoes with non-slip treads when using your Mower. If you have safety shoes, we recommend wearing them. Do not use the machine while barefoot or wearing open sandals.

Safety for Children and Pets

WARNING

Tragic accidents can occur if the operator is not alert to the presence of children and pets. Children are often attracted to the machine and the mowing activity. *Never* assume that children will remain where you last saw them. Always follow these precautions:

- Keep children and pets at least 100 feet from the working area and ensure they are under the watchful care of a responsible adult.
- Be alert and turn the machine off if children or pets enter the work area.
- Never allow children to operate the Mower.
- Before and while moving backwards, look behind and down for small children.
- Use extra care when approaching blind corners, shrubs, trees, or other objects that may obscure your vision.

Safety with Gasoline - Powered Machines

WARNING

Gasoline is a highly flammable liquid. Gasoline also gives off flammable vapor that can be easily ignited and cause a fire or explosion. Never overlook the hazards of gasoline. Always follow these precautions:

- Never run the engine in an enclosed area or without proper ventilation as the exhaust from the engine contains carbon monoxide, which is an odorless, tasteless, and deadly poisonous gas.
- Store all fuel and oil in containers specifically designed and approved for this purpose and keep away from heat and open flame, and out of the reach of children.
- Replace rubber fuel lines and grommets when worn or damaged and after 5 years of use.
- Fill the gasoline tank outdoors with the engine off and allow the engine to cool completely. Don't handle gasoline if you or anyone nearby is smoking, or if you're near anything that could cause it to ignite or explode. Reinstall the fuel tank and fuel container caps securely.
- If you spill gasoline, do not attempt to start the engine. Move the machine away from the area of the spill and avoid creating any source of ignition until the gas vapors have dissipated. Wipe up any spilled fuel to prevent a fire hazard and properly dispose of the waste.
- Allow the engine to cool completely before storing in any enclosure. Never store a machine that has gas in the tank, or a fuel container, near an open flame or spark such as a water heater, space heater, clothes dryer or furnace.
- Never make adjustments or repairs with the engine running. Shut down the engine, disconnect the spark plug wire, keeping it away from the spark plug to prevent accidental starting, wait 5 minutes before making adjustments or repairs.
- Never tamper with the engine's governor setting. The governor controls the maximum safe operation speed and protects the engine. Over-speeding the engine is dangerous and will cause damage to the engine and to the other moving parts of the machine. If required, see your authorized dealer for engine governor adjustments.
- Keep combustible substances away from the engine.
- Never cover the machine while the muffler is still hot.
- Do not operate the engine with the air cleaner or the carburetor air intake cover removed. Removal of such parts could create a fire hazard. Do not use flammable solutions to clean the air filter.
- The exhaust area on the engine becomes very hot with use. Allow the engine to cool before doing maintenance or making adjustments.
- Never tamper with safety devices. Check their proper operation regularly.
- To reduce fire hazard, keep the engine and muffler free of debris build-up.

Slope Operation

WARNING

Slopes are a major factor related to slip and fall accidents, which can result in severe injury. All slopes require caution. If you feel uneasy on a slope, do not mow it. Always take the following precautions when using this machine on slopes:

ALWAYS:

- Mow across the face of slopes; never up and down. Exercise extreme caution when changing direction on slopes.
- Remove objects such as rocks, tree limbs, etc.
- Watch for holes, ruts, or bumps. Tall grass can hide obstacles.

NEVER:

- Never mow near drop-offs, ditches, or embankments. You could lose your footing or balance.
- Never mow on slopes greater than 20 degrees or any excessively steep slopes.
- Never mow on wet slopes. Reduced traction could result in slipping.

Operating the Mower Safely

WARNING

This is a high-powered machine, with moving parts operating with high energy at high speeds. You must operate the machine safely. Unsafe operation can create a number of hazards for you, as well as anyone else in the nearby area. Always take the following precautions when using this machine:

- Never allow people who are unfamiliar with these instructions to use the mower.
- The mower can throw objects far and at great speeds. Keep people and pets at least 100 feet away from your machine at all times. Install warnings around the area of operation stating “It is prohibited to enter this area”. Disengage the blade and stop the engine when a person or pet approaches within 100 feet. Do not restart the machine until people and pets are at least 100 feet away from the mower.
- Clear the area of objects such as rocks, toys, wire, bones, sticks etc., which could be picked up and thrown by the blade.
- Be sure all blade and wheel controls are disengaged before attempting to start the engine. Engage and disengage the blade a few times to get used to it before mowing.
- Keep your hands and feet away from the blade, belts, chains, blade pulleys, and concealed areas while the engine is running. Never reach under the deck or grab hold of any part of the deck when the engine is running.
- Always shut off the engine whenever you leave the machine. Remove the spark plug wire before adjusting the machine. If you have to stop to remove grass or debris from the underside of the deck, always disconnect the spark plug wire first.
- When operating over uneven terrain and slopes, use extreme caution to ensure solid and firm footing. Keep a firm hold on the handlebars and walk, never run.
- Stop the blade when crossing gravel drives, walks, or roads.
- Use extra caution when mowing in wet or slippery conditions.
- Always operate the mower from behind. Never pass or stand on the discharge (right) side or in front of machine when the engine is running.
- Do not pull the mower backwards unless absolutely necessary. Look down, and behind before and while moving backwards.
- Do not, under any conditions, remove, bend, cut, fit, weld, or otherwise alter standard parts on the mower. This includes all shields and guards. Modifications to your machine could cause personal injuries and property damage and will void your warranty.
- If the machine starts to make an unusual noise or vibration, immediately shut off the engine, disconnect the spark plug wire, and allow all moving parts to come to a complete stop. Vibration is generally a warning of trouble. Inspect for clogging or damage. Clean and repair and/or replace damaged parts.
- While using the mower, do not hurry or take things for granted. When in doubt about the equipment or your surroundings, stop the machine and take the time to look things over. Make sure that you have 100% control of the mower at all times.
- Do not operate the machine when under the influence of alcohol or medication.
- Watch for traffic when mowing near roadways.
- Use the machine only in daylight.

⚠ CAUTION

The mower must be operated safely to prevent or minimize the risk of minor or moderate injury. Unsafe operation can create a number of hazards for you. Always take the following precautions when operating this mower:

- Keep in mind that the operator or user is responsible for accidents or hazards occurring to other people, their property, and themselves.
 - Use ear protectors or earplugs rated for at least 20 dba to protect your hearing.
 - Wear long pants while mowing.
 - Use caution when mowing close to fences, buildings, trees, etc. So as not to hit the handle bar. Doing so, you may injure your hand or lose control of the machine.
 - Keep all nuts and bolts tight, especially the blade attachment bolts, and keep the equipment in good operating condition.
 - The mower blade is sharp and can cut. Wrap the blade or wear gloves, and use extra caution when servicing.
-

A Note to All Users

Under California law, and the laws of some other states, you are not permitted to operate an internal combustion engine using hydrocarbon fuels without an engine spark arrester. This also applies to operation on US Forest Lands. All PREMIER DR® FIELD and BRUSH MOWERS shipped to California, New Mexico and Washington State are provided with spark arresters. Failure of the owner or operator to maintain this equipment in compliance with state regulations is a misdemeanor under California law and may be in violation of other state and/or federal regulations. Contact your State Park Association or the appropriate state organization for specific information in your area.

Additional Information and Potential Changes

DR Power Equipment reserves the right to discontinue, change, and improve its products at any time without notice or obligation to the purchaser. The descriptions and specifications contained in this manual were in effect at printing. Equipment described within this manual may be optional. Some illustrations may not be applicable to your machine.

No list of warnings and cautions can be all-inclusive. If situations occur that are not covered by this manual, the operator must apply common sense and operate this Mower in a safe manner. Contact us at www.DRpower.com or call 1 (800) DR-owner (376-9637) for assistance.

Chapter 2: Setting Up Your PREMIER DR FIELD and BRUSH MOWER

It may be helpful to familiarize yourself with the controls and features of your PREMIER DR FIELD and BRUSH MOWER as shown in *Figure 1* before beginning these procedures. If you have any questions at all, please feel free to contact us at www.DRpower.com.

PREMIER DR FIELD and BRUSH MOWER

Controls and Features

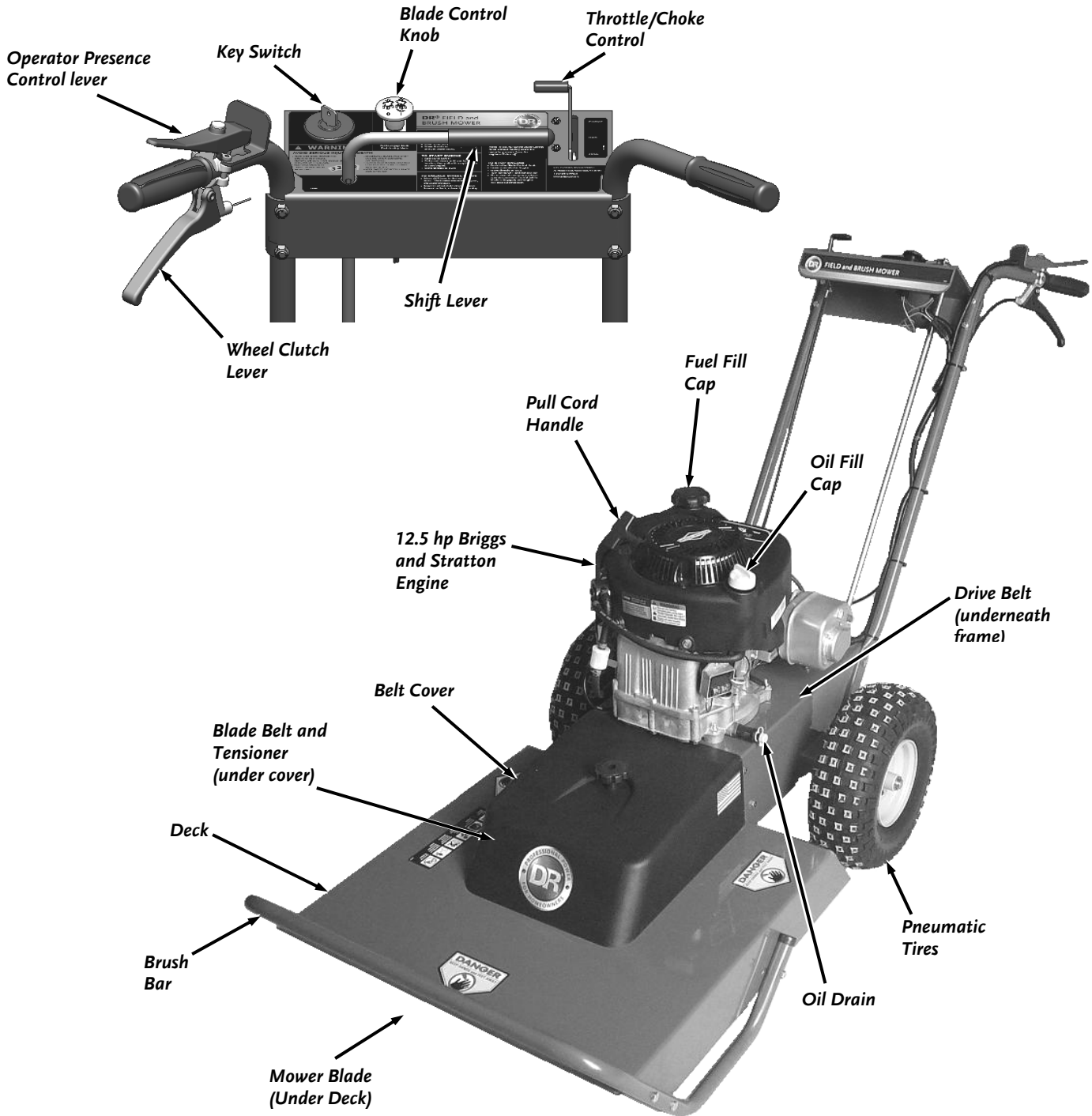


Figure 1

Specifications

MECHANICAL SPECIFICATIONS

Engine	Briggs and Stratton
Series	Intek
Max. HP	12.5 (9.3 kW)/3600 rpm
Fuel Capacity	.75 Gal (2.84 L)
Oil Capacity	48 oz. (1.42 L)
Tire Size	14.5" Pneumatic
Cutting Height	4"
Cutting Width	24"
Cutting Capacity	4' High Grass, 8' High Weeds and Brush, 2" Dia. Saplings
Blade Tip Speed	178 mph (15,700 Ft/Min)
Blade Drive	Electric Clutch
Blade Material	Hardened Steel
Deck Material	12 GA Welded Steel
Frame Material	12 GA Welded Steel
Drive	Transaxle – 3 Forward Gears, 1 Reverse Gear
Belts	Drive and Blade – V-Belts
Machine Width, Length,	72"L, 28-1/2"W, 39"H
Dry Weight	215 lbs.
Operating Weight	220 lbs.

SHIPPING SPECIFICATIONS

Shipping Weight	285 lbs.
Shipping Dimensions	82"L, 36"W, 46"H

Unpacking the PREMIER DR FIELD and BRUSH MOWER

Tools and Supplies Needed:

- Screwdriver
- Metal Shears
- Utility Knife
- Gloves and Eye Protection

CAUTION

- Wear eye protection when cutting the banding. The banding may have a lot of tension on it and may snap and cut you. Always stand to one side when cutting the band.
- Stabilize the shipping container on clean flat terrain before attempting to unpack and assemble the machine.

1. Stand to one side and cut the banding.
2. Remove the top of the carton. Separate the stapled vertical cardboard ends from the pallet to access the pallet straps. Be careful of the staples.
3. Pry off the fasteners and cut any ties holding the machine to the pallet.
4. Roll the mower off the pallet. Do not discard your pallet and packaging material until you are fully satisfied with your new PREMIER DR FIELD and BRUSH MOWER.

CAUTION

Wear gloves and be very careful when handling the deck. The blade is very sharp, and may spin as you maneuver the deck.

5. Remove the Blade Protector from the Blade. (See CAUTION note above).

Adding Oil and Gasoline

NOTICE

- You must add oil before starting the engine. This machine is shipped without oil. Traces of oil may be in the reservoir from factory testing, but you must add oil before starting the engine. Fill the reservoir slowly, checking the level frequently to avoid overfilling.
- To get an accurate reading when checking the oil level:
 - the machine should be on a level surface.
 - the dipstick should be screwed down to ensure an accurate oil level reading.

Tip: To avoid confusion, we recommend leaving the caps ON the fuel and oil fills until you are ready to pour either gasoline or oil into the correct fill.

NOTE: Use only SAE 30 high detergent oil. Other types of oil could cause problems operating your machine. Please refer to your Engine Owner's Manual for detailed oil information.

Engine Oil	48 oz. SAE 30 high detergent
Fuel	.75 Gal. Unleaded gasoline

1. Place the machine on a level surface, remove the Oil Fill/Dipstick (**Figure 2**) and clean the end of it with a rag.
2. Machines are shipped with no oil. Initially add 40 oz. of the oil recommended by the Engine Manufacturer. Wait one minute for the oil to settle.
3. Replace the Dipstick, screw it in, to ensure an accurate reading and then remove it to check the oil level (clean the Dipstick with the rag after checking).
4. Continue adding a few ounces of oil at a time, rechecking the Dipstick until the oil reaches the fill mark. Be careful not to overfill.
5. Replace the Dipstick and screw all the way down when full.
6. Remove the Gas Fill Cap and fill the Gas Tank with fresh, unleaded gas (with a minimum of 85 Octane) to approximately 1" to 1-1/2" below the top of the fill neck to allow for fuel expansion. Be careful not to overfill and reinstall the Gas Fill Cap before starting the engine. See your Engine Owner's Manual for more detailed information.

NOTE: To refill the gas tank, turn the engine OFF and let the engine cool at least five minutes before removing the gas fill cap.

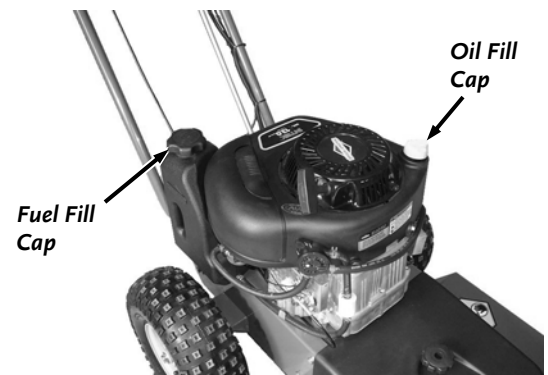


Figure 2

Check the Tire Pressure

WARNING

Do not over inflate the tires. Inflate to the manufacturer's recommended pressure found on the tires.

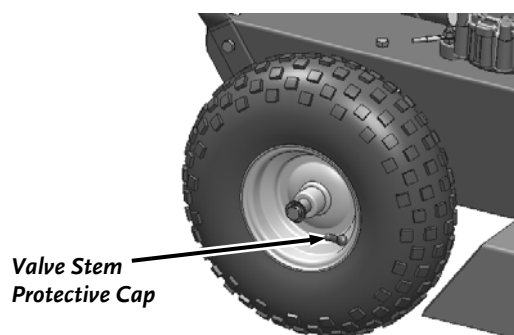


Figure 3

Tools Needed:

- Tire Pressure Gauge
- Air Compressor

1. Remove the Valve Stem Protective Cap (**Figure 3**) and check the tire pressure with a tire pressure gauge.
2. If the pressure is too low, add air through the Valve Stem with an air hose.
3. Replace the Valve Stem Protective Cap when finished.

Chapter 3: Operating Your PREMIER DR FIELD and BRUSH MOWER

It may be helpful to better familiarize yourself with the features of your Mower by reviewing **Figure 1** in Chapter 2 before beginning the steps outlined in this chapter.

The Pre-Start Safety Check

Your PREMIER DR FIELD and BRUSH MOWER is fitted with an Operator Presence System to prevent the blade from turning without an operator in the proper position at the controls. In addition, normal wear and tear can bring about the need for adjustment to some running parts to insure that they function properly in terms of safe operation.

For your protection, it is imperative that you perform these simple test procedures before each use of the machine to verify that the safety equipment is in good order and that no part adjustments are needed for safe operation.

Test your Operator Presence Control System:

1. Start your machine following the instructions in the “Starting” section on the next page. Hold the Operator Presence Control Lever as you engage the Blade by pulling up on the Blade Control Knob (**Figure 4**).
2. Remain behind the handlebars and release both hands from the controls.
3. THE ENGINE SHOULD SHUT OFF AND STOP THE BLADE. If the Engine and Blade do not stop, your Operator Presence Control System may be damaged or disabled.

WARNING

Stop using your machine immediately and turn the ignition key to “OFF”!

Inspect the system for the following:

- Intentional disabling of the operator presence system through part modification or temporary measures used to override the system.
- Loose electrical connections.
- Broken parts.

After inspection, repeat this test. If your system still does not operate properly, REMOVE THE KEY FROM THE IGNITION SWITCH TO PREVENT OTHERS FROM OPERATING THE EQUIPMENT.

Contact us at www.DRpower.com for assistance.

Checking clutch engagement:

1. Start your machine in the normal manner.
2. With the Operator Presence Lever depressed, shift into low gear.
3. Increase the engine rpm but do not squeeze the Clutch Lever. The machine should not move when you are not squeezing the Clutch Lever.

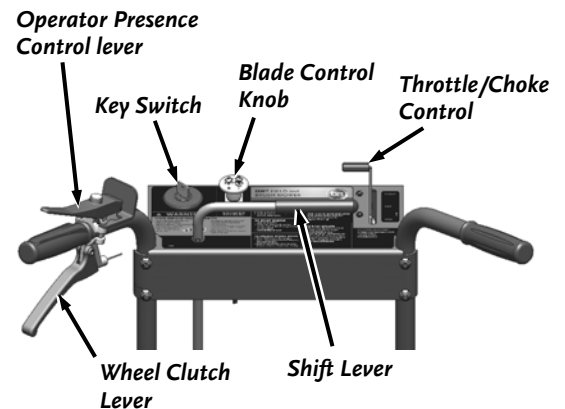


Figure 4

Before Starting the Engine

1. Check the oil level every time you use the machine. See Figure 2 on page 9.
2. Check the gas level.

Starting

1. Move the Shift Lever to N (Neutral) (**Figure 5**).
2. Move the Throttle to the RUN position.

NOTE: If the engine is cold, push the Throttle to "Choke".

3. Turn the Key to START.
4. Grasp the recoil starter handle and slowly pull until you feel resistance. Let the cord retract a little bit, then pull the cord rapidly to start the engine. One or two pulls usually starts the PREMIER DR FIELD and BRUSH MOWER.
5. As the engine warms up, slowly adjust the Throttle to the desired engine speed. Wait until the engine runs smoothly before each Throttle adjustment.

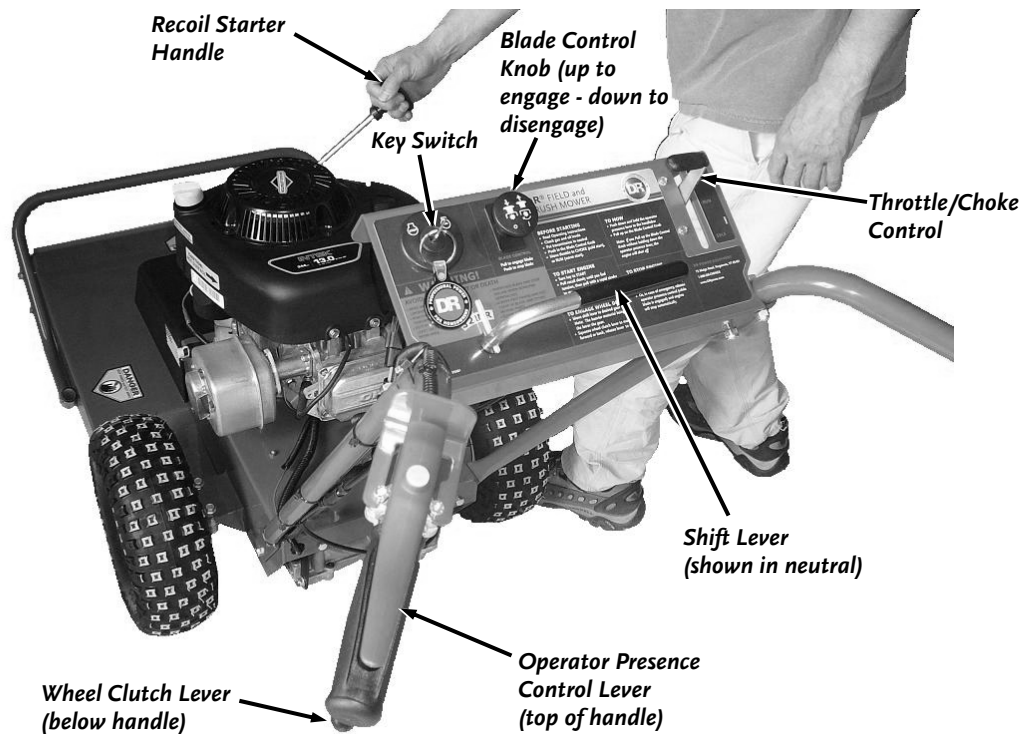


Figure 5

Engaging the Wheel Drive

The PREMIER DR FIELD and BRUSH MOWER has a three-speed forward transmission and single-speed reverse. Forward speeds range from 1.0 mph in first gear to 3.0 mph in third gear. Use the lower gears for mowing in thick, woody vegetation and the higher gears for wide-open areas and lighter vegetation, or as "travel gears." Reverse is ideal for maneuvering in tight spots.

NOTE: Always release the Wheel Clutch Lever (**Figure 5**) when shifting gears.

1. Move the Shift Lever to the desired gear.
2. Gently squeeze the Wheel Clutch Lever to engage a gear.
3. Release the Wheel Clutch Lever if you need to slow down or stop.

Engaging the Blade

NOTE: If the Throttle is not set to the RUN position, the Engine might stall when the Blade is engaged.

1. Hold down the Operator Presence Control Lever (**Figure 5** on page 12).
2. Engage the Blade by pulling up on the Blade Control Knob.

NOTE: If you pull up on the Blade Control Knob before holding down the Operator Presence Control Lever, the engine will shut off.

CAUTION

Always disengage the blade of the PREMIER DR FIELD and BRUSH MOWER before shifting into reverse.

Stopping the Blade

1. Push in the Blade Control Knob (**Figure 5** on page 12).

NOTE: Releasing the Operator Presence Control Lever to disengage the Blade will cause the engine to shut off.

Stopping the Engine

1. Stop the Blade by pushing in the Blade Control Knob (**Figure 5** on sheet 12).
2. Move the Shift Lever to the N (Neutral) position.
3. Move the Throttle Control to the IDLE position.
4. Turn the Key to the OFF position and remove it for safety.

Obstacle Tips

WARNING

- The mower engine's power can easily throw stones, sticks, and other debris up to 100 feet at great velocity, which could cause personal injury or property damage. Do not run the machine over gravel driveways or over loose stones or mulch with the mower blade spinning.
 - Always check your work area before mowing and remove any debris that might tangle or damage the machine. If you do run into debris and the mower becomes tangled, turn off the engine and disconnect the spark plug wire before attempting to untangle the machine.
 - Never touch the exhaust areas when reaching for the spark plug—they are very hot.
-

Slopes

! WARNING

- When operating the PREMIER DR FIELD AND BRUSH MOWER over uneven terrain or slopes, use extreme caution not to tip over the machine.
- Never use the PREMIER DR FIELD AND BRUSH MOWER on slopes greater than 20 degrees (*figure 6*). Doing so could result in serious injury or damage to your machine.

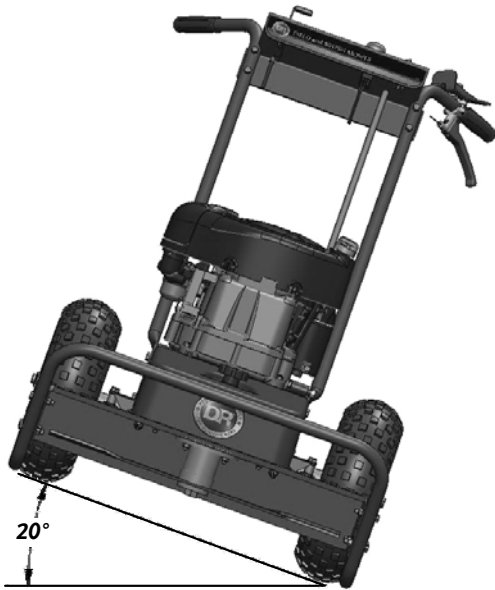


Figure 6

1. If you have to mow on sloping terrain, mow across the slope, not up and down, for better control.
2. To avoid “free-wheeling”, shift into a lower gear before going down a slope. NEVER shift while on a slope.

If the machine gets hung up

1. Disengage the Blade. NEVER try to free the machine from stumps or debris with the Blade engaged.
2. Try putting the machine in reverse and backing away from the obstacle.
3. Try pushing down on the handlebars to lift the mowing deck over the obstacle.

Cutting Brush and Saplings

1. When cutting woody material, small saplings, etc., allow the machine to ride up and over material slowly. Adjust your forward speed to varying conditions.
2. After cutting brush, etc., you may want to mow over it again to remove any remaining branches. It works best to mow from the trunk end toward the top as brush lies on the ground.

! WARNING

- If you need to leave the operating position to clear debris from the deck, first put the machine in “n” (neutral), turn the engine off and disconnect the spark plug wire.
- Never touch the exhaust areas when reaching for the spark plug—they are very hot.

Reverse

1. Be very careful of your footing when operating the machine in reverse. Know what is behind you and take your time.
2. Disengage the Blade before shifting into reverse. Mow in the forward gears only, using reverse for maneuvering.
3. If you find it difficult to shift into reverse, lightly “feather” the Wheel Clutch Lever as you put the Shift Lever into reverse, then quickly release the Wheel Clutch Lever.
4. Gently squeeze the Wheel Clutch Lever to start moving in reverse.

Cutting in Wet and Heavy Growth

1. Be very careful of your footing when mowing in wet conditions. Avoid steep slopes and other slippery areas.
2. Use a lower, slower speed when mowing in wet conditions.

Chapter 4: Maintaining Your PREMIER DR FIELD and BRUSH MOWER

Regular maintenance is the way to ensure the best performance and long life of your machine. Please refer to this manual and the engine manufacturer's owner's manual for maintenance procedures. Service intervals listed in the checklist below supersede those listed in the engine manufacturer's owner's manual.

⚠ WARNING

Shut down the engine, remove the spark plug wire and wait 5 minutes before performing any maintenance procedure or inspection on the Mower.

Regular Maintenance Checklist

NOTE: Consider the service intervals shown as maximum under normal operating conditions. Increase frequencies under extremely dirty or dusty conditions.

PROCEDURE	BEFORE EACH USE	EVERY 25 HOURS	EVERY 100 HOURS
Check Operator Presence Switch	▲		
Check Engine Oil Level	▲		
Check General Equipment Condition	▲		
Check Blade for Sharpness	▲		
Clean Engine Exterior and Cooling Fins	▲		
Lubricate Wheel Clutch Lever*		▲	
Clean around Idlers		▲	
Check Tire Pressure		▲	
Change Engine Oil	1 st time 5 hours	▲	
Check all Belt Tensions and Condition		▲	
Check Cable connections		▲	
Replace Air Filter and Pre-cleaner		▲	
Replace Spark Plug			▲
Replace Fuel Filter			▲

* SAE 30 Oil; NEVER use penetrating oil.

Lubrication

⚠ WARNING

Shut down the engine, remove the spark plug wire and wait 5 minutes before performing any maintenance procedure or inspection on the Mower.

Your PREMIER DR FIELD and BRUSH MOWER was lubricated at the Factory. The Spindle and Transaxle are lubricated for life and sealed at the factory. The operator needs to periodically lubricate the Wheel Clutch Cable and provide engine lubrication.

Supplies Needed:

- SAE 30 Oil

1. Lubricate the Wheel Clutch Cable with SAE 30 Oil (**Figure 7**). Apply the lubricant into the cable housing while working the cable back and forth a few times. You should do this at both ends of the cables. Perform this lubrication more often in dry and dusty environments.

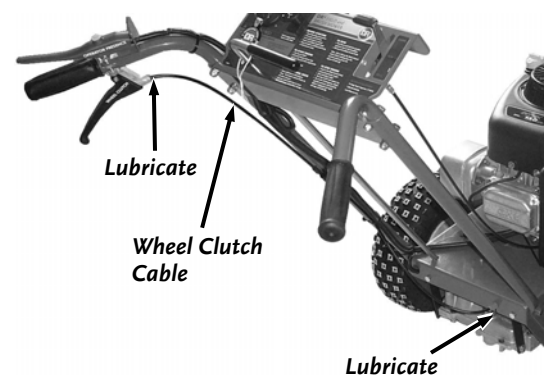


Figure 7

Removing the Engine Oil

Supplies Needed:

- SAE 30 Oil
- Oil Drain Container (at least 50 oz. capacity)

! WARNING

Shut down the engine, remove the spark plug wire and wait 5 minutes before performing any maintenance procedure or inspection on the Mower.

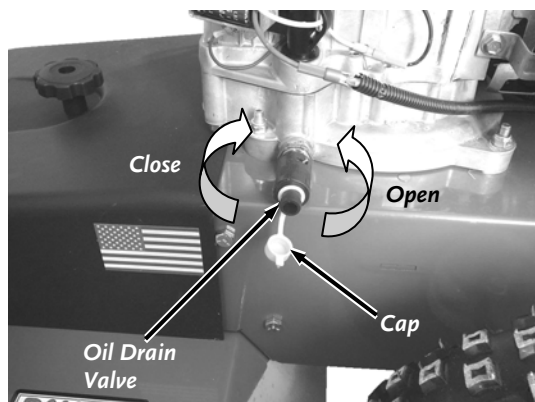


Figure 8

Manually:

1. Remove the Oil Filler Cap (see “Adding Oil and Gasoline” in Chapter 2) and position a suitable oil drain container under the machine near the Oil Drain Valve.

NOTE: If needed, a Hose that came in your machine product package can be inserted over the end of the Oil Drain Valve to help direct the Oil.

2. Open the Cap on the Oil Drain Valve (**Figure 8**) and as you push in the Oil Drain Valve, turn it counterclockwise then pull it out for draining.
3. When the Oil is completely drained, push the Oil Drain Valve in and turn clockwise until it locks into position.
4. Push the Cap fully onto the Oil drain Valve.
5. Replace the oil by following the instructions “Adding Oil and Gasoline” in Chapter 2.

Alternate Method:

1. Remove the Oil Fill Cap and vacuum the oil from the engine through the Oil Fill Tube using a vacuum oil drainer.
2. Replace the oil by following the instructions “Adding Oil and Gasoline” in Chapter 2.

NOTE: If you are not reusing the oil, be sure to use environmentally safe disposal procedures in the disposing of the used oil.

Removing and Replacing the Belts

! WARNING

Shut down the engine, remove the spark plug wire and wait 5 minutes before performing any maintenance procedure or inspection on the Mower.

NOTICE

Use only DR belts on your machine. They have been thoroughly tested and proven for many hours of use

To Replace the Blade Belt

Tools and Supplies Needed:

- 9/16" Wrench
- Gloves

1. Remove the Belt Guard by unscrewing the black Knob and pulling the Guard up off the Stud (**Figure 9**).
2. Remove the top nut from the Tensioner Spring Bolt (**Figure 10**) with a 9/16" Wrench. Remove the Tensioner Spring from the Bolt Threads by gripping the Spring with your gloved hand, pulling the Spring toward the Bolt, and lifting up off of the Bolt Threads.
3. Remove the Belt from the Electric Clutch Pulley below the machine and then remove it from around the Blade Pulley.
4. To mount the Belt, follow the above procedure in the reverse order.

NOTE: Make sure to route the new Belt on the right hand side of the Idler Pulley as shown in Figure 10.

To Replace the Drive Belt

! WARNING

Shut down the engine, remove the spark plug wire and wait 5 minutes before performing any maintenance procedure or inspection on the Mower.

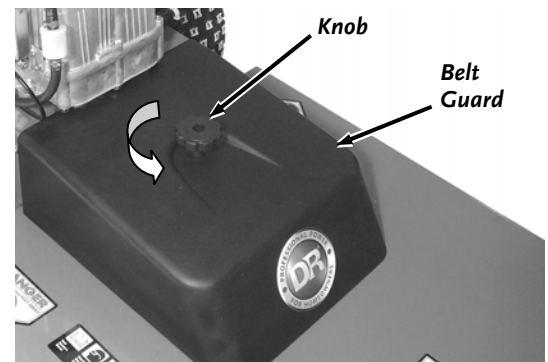


Figure 9

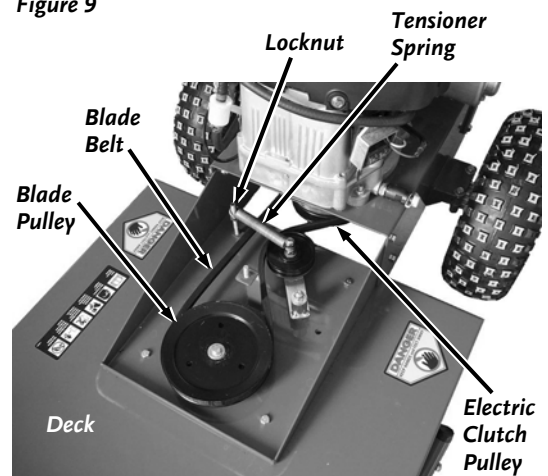


Figure 10

NOTICE

Use only DR belts on your machine. They have been thoroughly tested and proven for many hours of use.

Tools Needed:

- 7/16" Wrench
- Two 1/2" Wrenches
- Gloves

1. Remove the Blade Belt as described in the previous instructions.

! CAUTION

Make sure that the Handlebars are supported before removing the Deck to prevent the machine from tipping over.

2. Remove the six Bolts and Locknuts that secure the Deck with two 1/2" Wrenches and remove the Deck (**Figure 11**).
3. Disconnect the Harness from the Electric Clutch (**Figure 12**).
4. Remove the two Locknuts and Washers from the Belt Guide Studs with a 1/2" Wrench and remove the Belt Guide.

NOTE: Remember how the Belt Guide is oriented for installation procedures.

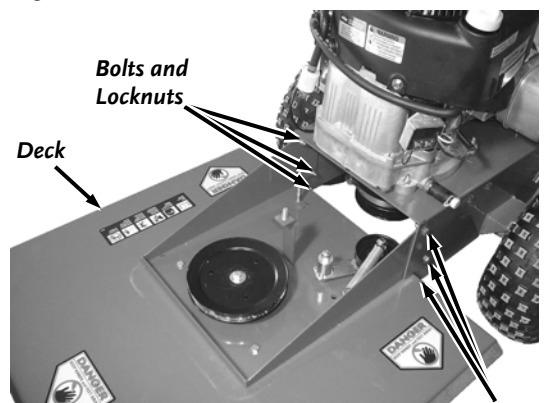


Figure 11

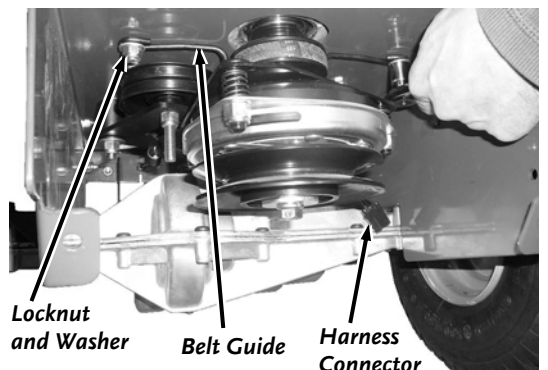


Figure 12

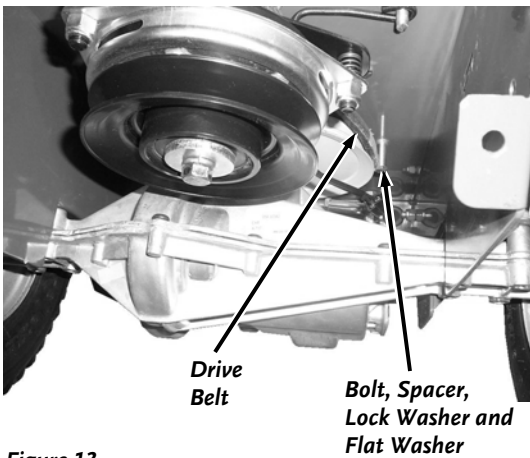


Figure 13

5. Remove the two Bolts, Spacers, Flat Washers and Lock Washers that guide the Belt onto the Transaxle Pulley with a 7/16" Wrench (**Figure 13**).
6. Remove the Belt from the Pulleys and re-install the new Belt by reversing the above procedure.

Installing a New Clutch

! WARNING

Shut down the engine, remove the spark plug wire and wait 5 minutes before performing any maintenance procedure or inspection on the Mower.

Tools and supplies needed:

- 1-1/2" Wrench
- 5/8" Wrench

1. Remove the Drive Belt per previous instructions.
2. Hold the V-Belt Pulley with a 1-1/2" Wrench and remove the Bolt, Lock Washer and Large Flat Washer that secures the Clutch.
3. Remove the Clutch.

Tip: Rock the Clutch back and forth while pulling and then change hand positions around the Clutch.

NOTE: The V-Belt Pulley may come off when the Clutch is removed. Check the orientation so it can be reinstalled correctly.

4. Install the new Clutch.

NOTE: Make sure the Key is in the shaft and that you align the Keyway of the Clutch with the Key.

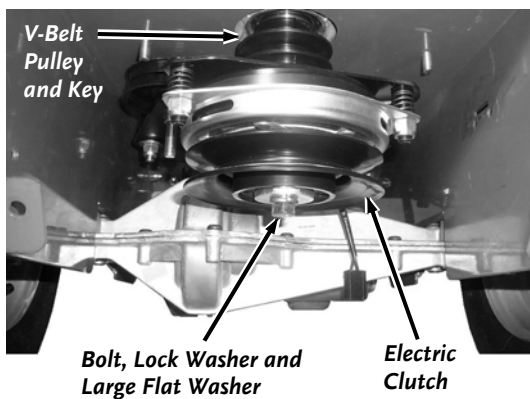


Figure 14

Removing and Replacing the Blade

! WARNING

Use caution when pushing or pulling the wrench next to the blade. Wear gloves; if the wrench slips off the bolt, you may be seriously injured.

Tools and Supplies needed:

- 15/16" Wrench
- Gloves
- Block of wood to brace the Blade (at least 2" thick)

1. Brace the Blade with a block of wood between the Blade and the Mower Deck (**Figure 15**).
2. Remove the Blade Bolt (right-hand, regular thread) Lock Washer and Large Flat Washer.
3. Remove the Blade.
4. Mount the new Blade, Large Flat Washer, Lock Washer, and Bolt.

NOTE: Be sure to position the Blade with the fins pointing up towards the Deck for it to work properly.

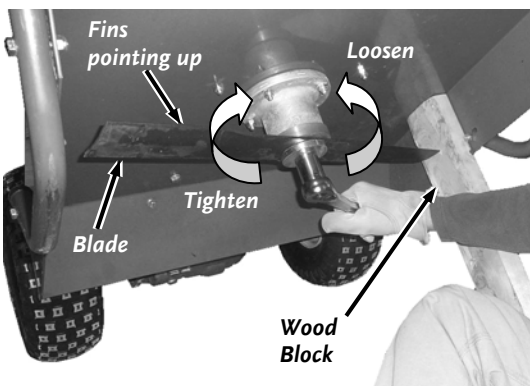


Figure 15

Removing the Wheels

Tools needed:

- Needle Nose Pliers
1. Block the machine so the Wheel you are removing is off the ground.
 2. Remove the Retaining Ring with the Pliers.
 3. Remove the Shim and slide the Wheel off the Axle (**Figure 16**).
 4. Replace the Wheel in the reverse order as above.

NOTE: Make sure the Retaining Ring is fully locked onto the Axle when installing Wheels.

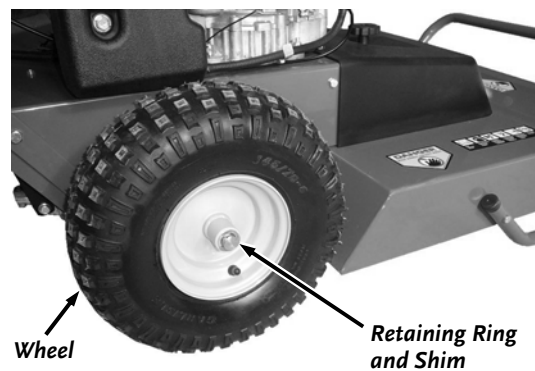


Figure 16

Chapter 5: Troubleshooting

Most problems are easy to fix. Consult the Troubleshooting Table below for common problems and their solutions. If you continue to experience problems, contact us at www.DRpower.com or call 1-800-DR-OWNER (376-9637) for support.

WARNING

Shut down the engine, remove the spark plug wire and wait 5 minutes before performing any maintenance procedure or inspection on the Mower.

Troubleshooting Table

SYMPTOM	POSSIBLE CAUSE
<i>Recoil will not pull out or is difficult to pull.</i>	<ul style="list-style-type: none"> ⇒ Check that the Blade Control Knob is pushed in to the released position. ⇒ Check the Engine oil level, the Engine may be seized. ⇒ There may be an oil compression lock in the Cylinder. Take out the Spark Plug; hold a rag over the Spark Plug hole and pull the Recoil Cord several times to blow out any oil in the Cylinder. Wipe off the Spark Plug and reinstall it. ⇒ The Recoil may be broken or jammed. Visit us at www.DRpower.com.
<p><i>The Engine will not start.</i></p> <p><i>(Please refer to the Engine Owner's Manual for Engine-specific procedures.)</i></p>	<ul style="list-style-type: none"> ⇒ Make sure the Spark Plug Wire is attached. ⇒ Make sure the Key is in the START position. ⇒ If the Engine is cold, position the Throttle to "Choke". ⇒ The gas must be fresh and clean. If the gas is old, change it. Use a fuel stabilizer if you keep gas longer than one month. ⇒ Check the Throttle adjustment and travel. ⇒ The Blade Control Knob must be in the down position. ⇒ Make sure that the Spark Plug is clean. If the Spark Plug is dirty or cracked, change it. If it's oily, leave it out, hold a rag over the Plug hole and pull the Recoil Cord several times to blow out any oil in the Cylinder, then wipe off the Plug and reinsert it.
<p><i>The Engine lacks power or is not running smoothly.</i></p> <p><i>(Please refer to the Engine Owner's Manual for Engine-specific procedures.)</i></p>	<ul style="list-style-type: none"> ⇒ Check the Throttle Lever travel and adjustment. Make sure the Throttle Lever is in the Run position. ⇒ Check that the Air Filter is clean. If it is dirty, change it following the procedure in the Engine Owner's Manual. ⇒ Make sure that the Spark Plug is clean. If it has fouled or cracked, change it. If it's oily, leave it out, hold a rag over the Plug hole and pull the Recoil Cord several times to blow out any oil in the Cylinder, then wipe off the Plug and reinsert it. ⇒ The gas must be fresh and clean. If it is old, change it. Use a fuel stabilizer if you keep gas longer than four weeks or so. ⇒ Check to make sure that your Engine has the right amount of clean oil. If it is dirty, change it following the procedure on page 16. ⇒ If your Engine still lacks power, Visit us at www.DRpower.com.

Troubleshooting Table (Continued)

WARNING

Shut down the engine, remove the spark plug wire and wait 5 minutes before performing any maintenance procedure or inspection on the Mower.

SYMPTOM	POSSIBLE CAUSE
<i>Engine smokes.</i>	<ul style="list-style-type: none"> ⇒ Check the oil level and adjust as needed. ⇒ You may be operating the machine on too great an incline. See Slopes on page 14. ⇒ Check the Air Filter(s) and clean or replace if needed. ⇒ You may be using the wrong oil—too light for the temperature. Refer to your Engine Owner's Manual for detailed information. ⇒ Clean the Cooling Fins if they are dirty. ⇒ If the Engine still smokes, Visit us at www.DRpower.com.
<i>Machine is hard to get into reverse.</i>	<ul style="list-style-type: none"> ⇒ If you find it difficult to shift into reverse, lightly pull the Clutch Lever as you pull the Shift Lever into Reverse then quickly release the Clutch Lever. ⇒ If the difficulty persists, Visit us at www.DRpower.com.
<i>The Belt frays or rolls over the Pulley.</i>	<ul style="list-style-type: none"> ⇒ A Pulley groove may be nicked. Check the Belt for wear and hard spots. File off any nicks on the Pulley. ⇒ The Belt may be stretched; replace it.
<i>Blade vibrates when engaged.</i>	<ul style="list-style-type: none"> ⇒ Replace the Blade if it is chipped, bent, or broken. ⇒ The Spindle Bearings may be bad or the Spindle Shaft is bent. Visit us at www.DRpower.com.
<i>The Blade is not cutting or is loose.</i>	<ul style="list-style-type: none"> ⇒ The Blade may not be seated properly on the hub. Loosen the Blade Bolt, reseal the Blade, and tighten the Bolt. Be sure to turn OFF the Engine and remove the Spark Plug Wire before performing this operation. ⇒ Sharpen the Blade; it may be dull or nicked.
<i>Wheels pulling left or right.</i>	<ul style="list-style-type: none"> ⇒ The Tires may not have the proper air pressure. Check the recommended Tire pressure on the side of the Tire. Do not exceed the maximum pressure recommended.
<i>The Wheels will not drive.</i>	<ul style="list-style-type: none"> ⇒ The Transaxle is not in gear. Shift the Transaxle into gear. ⇒ The Drive Belt is worn or broken. Replace the Drive Belt. See Page 17.

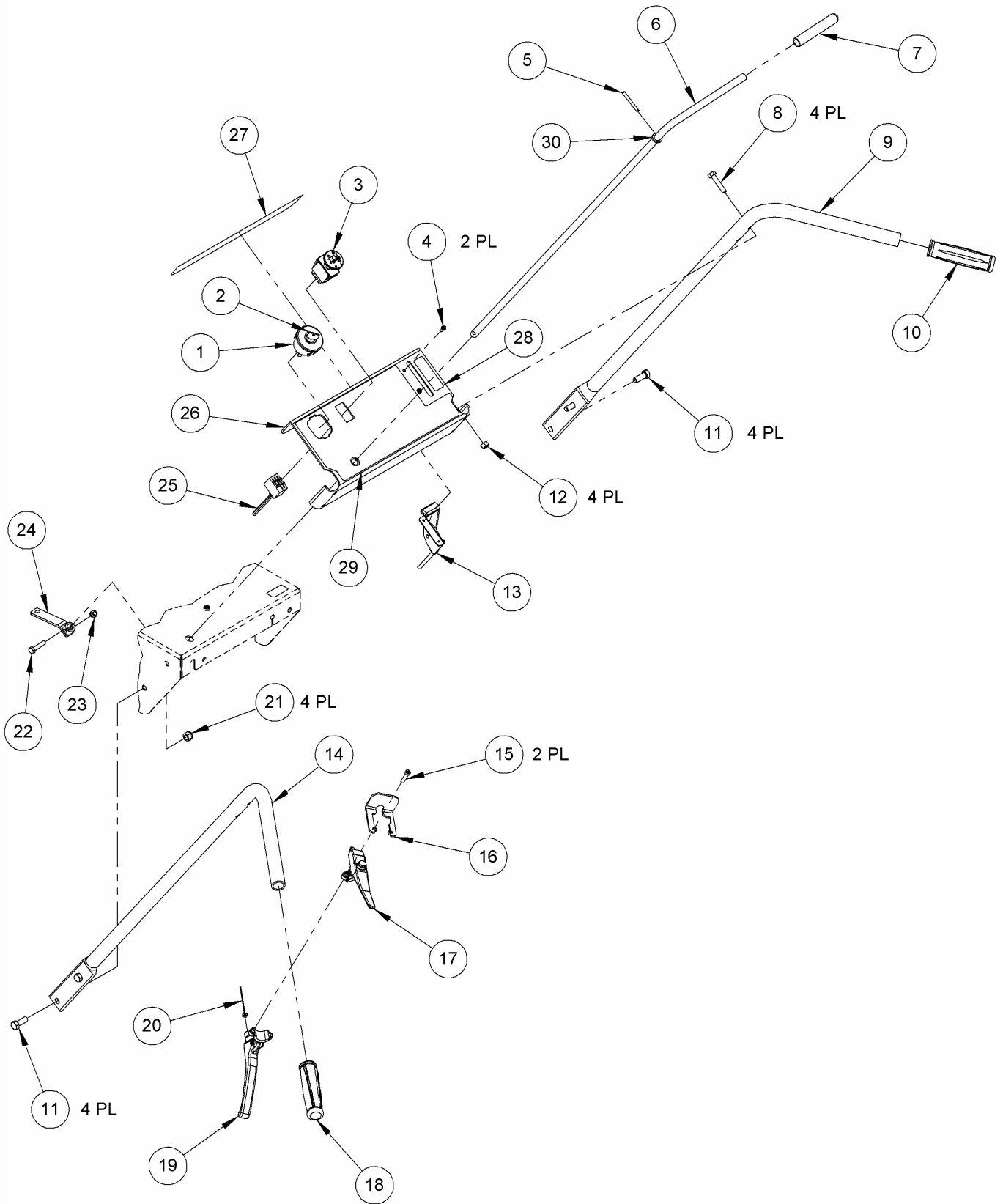
Chapter 6: Parts Lists, Schematic Diagrams And Warranty

Parts List - HANDLEBAR ASSEMBLY

NOTE: Part numbers listed are available through DR Power Equipment.

<u>Ref#</u>	<u>Part#</u>	<u>Description</u>	<u>Ref#</u>	<u>Part#</u>	<u>Description</u>
1	151931	Switch w/Key, Snap-in	16	164971	Guard, Switch Magura
2	157201	Key, Ignition Switch	17	180691	Lever, OP w/Harness
3	191231	Switch, Push/pull TPDT	18	164951	Grip, Ergonomic, 1"
4	150491	Screw, 8-32 x 1/2"	19	165171	Lever, Wheel Clutch
5	110971	Pin, Spring, 3/16" x 1-3/4"	20	247431	Cable, Traction Drive
6	247371	Arm, Shift Upper	21	110751	Nut, Nylon Lock, 3/8-16
7	110221	Grip, Shift Handle	22	114681	Bolt, HCS, 1/4-20 x 1-1/4", GR5
8	134431	Bolt, HCS, 5/16-18 x 1.5", GR5	23	110731	Nut, Nylon Lock, 1/4-20
9	247301	Handlebar, Right	24	247361	Arm, Shift Lower
10	164961	Grip, Plain, 1"	25	256411	Wire Harness, 12.5 B&S
11	111521	Bolt, HCS, 3/8-16 x 1", GR5	26	257041	Panel, Control, w/ Labels
12	110761	Nut, Nylon Lock, 5/16-18	27	256891	Label, DR Strip
13	139051	Cable, Throttle, 50"	28	256901	Label, Throttle
14	247291	Handlebar, Left	29	256881	Label, Control Panel
15	179231	Screw, SH, M6 25mm	30	112441	Washer, 1/2" ID x 3/4" OD

Schematic – HANDLEBAR ASSEMBLY



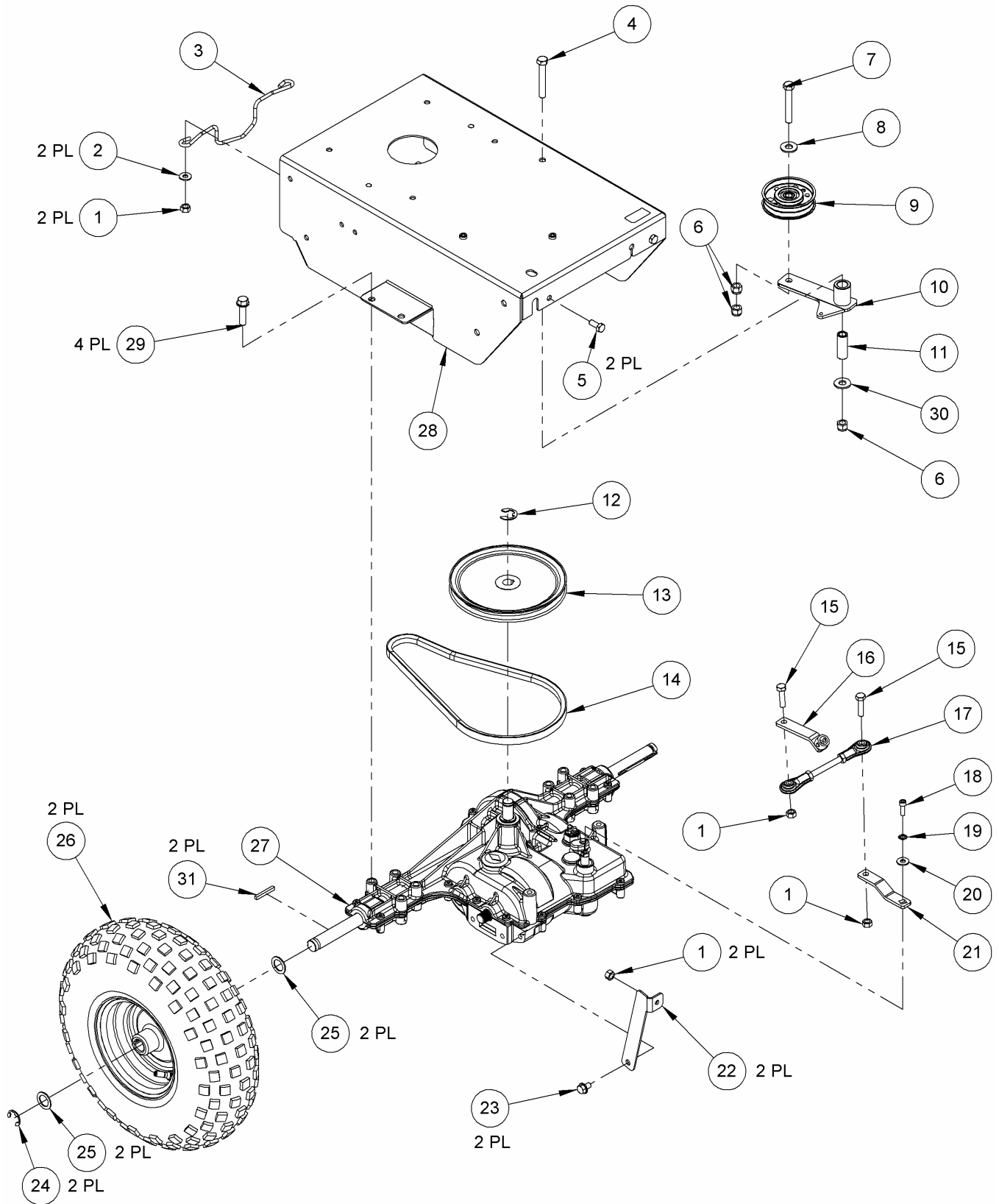
042810

Parts List – TRANSAXLE AND WHEEL ASSEMBLY

NOTE: Part numbers listed are available through DR Power Equipment.

<u>Ref#</u>	<u>Part#</u>	<u>Description</u>	<u>Ref#</u>	<u>Part#</u>	<u>Description</u>
1	110761	Nut, Nylon Lock, 5/16-18	17	247381	Linkage, Shift
2	112381	Washer, Flat, 1/4", USS	18	111501	Screw, Socket HD, 1/4-28 x 3/4, blk
3	247421	Guide, Belt	19	112481	Washer, Lock, 1/4
4	150691	Bolt, HCS Shoulder, 3/8-16 x 2-1/2	20	112381	Washer, Flat, 1/4, USS
5	123211	Bolt, HCS, 5/16-18 x 3/4, Gr5, zp	21	247401	Arm, Shift
6	110751	Nut, Nylon Lock, 3/8-16	22	247411	Bracket, Transaxle
7	150691	Bolt, HCS, 3/8-16 x 2-1/2", Gr5, zp	23	111731	Screw, 5/16-18 x 1/2", Tri
8	112391	Washer, Flat, 3/8 USS	24	111261	Ring, Retaining, 3/4, E
9	108501	Pulley, Flat Idler, 3"	25	129691	Shim, .75ID x 1.125OD x .06L, zp
10	247391	Arm, Idler	26	247441	Wheel, 14.5 x 7-6, 2 Ply, Gray
11	151111	Bushing, .39ID x .62OD x 1.585	27	247461	Transaxle, 3 Speed
12	111241	Ring Retaining 5/8 SH	28	247271	Frame, Rear
13	111141	Pulley, V-Belt, 7", 5/8" Bore	29	120301	Screw, Tri 3/8-16 x 1-1/2
14	150061	Belt A31K 1/2 x 33	30	112391	Washer, Flat, 3/8", USS
15	123361	Bolt, HCS, 5/16-18 x 1-1/4, Gr5, zp	31	106381	Key, Square, 3/16" x 1-1/2"
16	247361	Arm, Shift, Lower			

Schematic – TRANSAXLE AND WHEEL ASSEMBLY



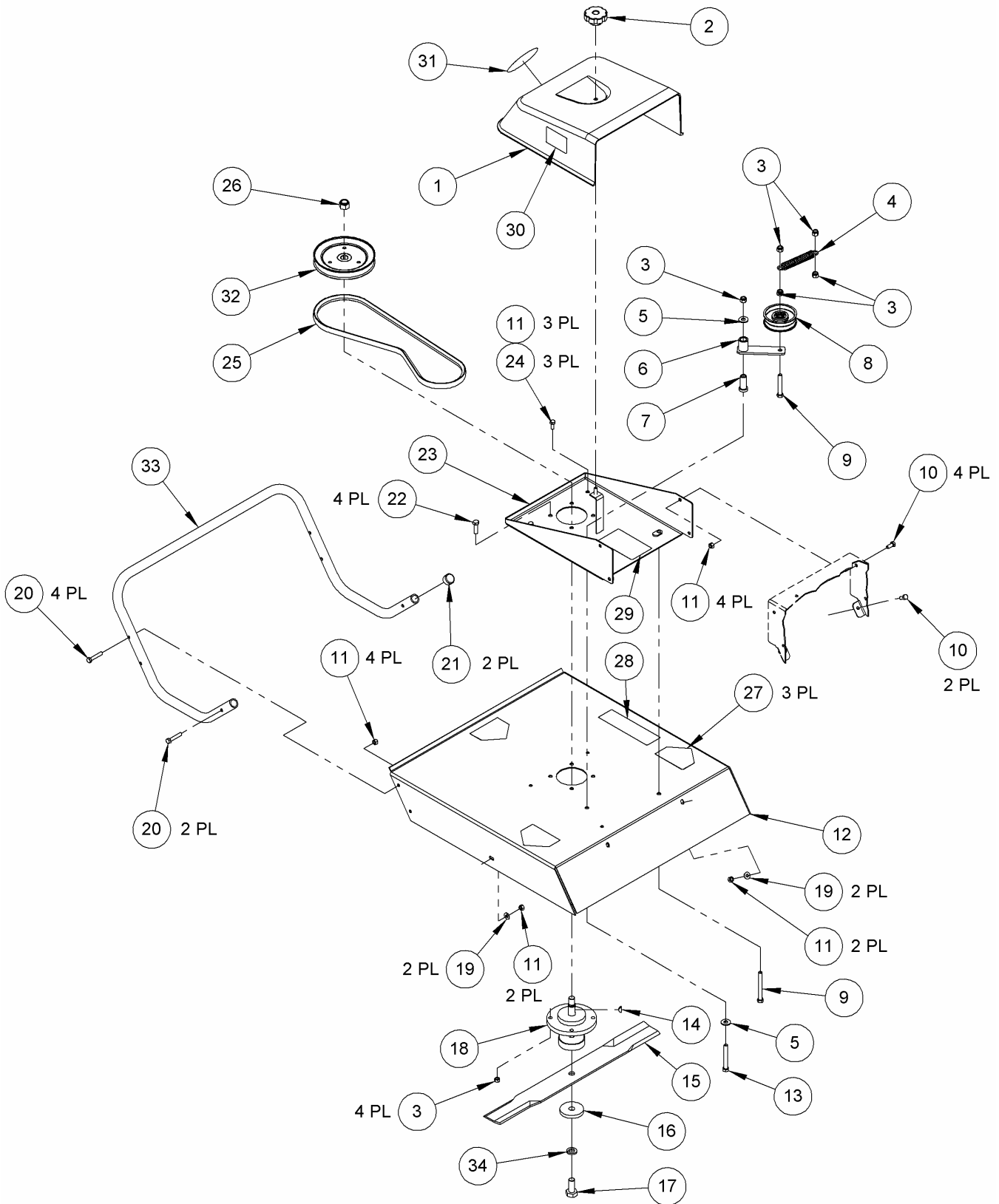
042810

Parts List – BRUSH DECK ASSEMBLY

NOTE: Part numbers listed are available through DR Power Equipment.

<u>Ref#</u>	<u>Part#</u>	<u>Description</u>	<u>Ref#</u>	<u>Part#</u>	<u>Description</u>
1	257051	Cover, Deck, w/ Labels	18	256391	Housing, Spindle
2	143661	Knob, handlebar, 5/16-18	19	112381	Washer, Flat, 1/4, USS
3	110751	Nut, Nylon Lock, 3/8-16	20	150451	Bolt, HCS, 5/16-18 x 1-3/4, Gr5, zp
4	101621	Spring, E, .750OD, .105wire, 5.0L, zp	21	109481	Cap, Round, 1"
5	112391	Washer, Flat, 3/8, USS	22	150431	Bolt, HCS, 3/8-16 x 1-1/4", Gr5, zp
6	150611	Arm, Idler, Traction Drive	23	257071	Frame, Front, W/ Labels
7	247451	Bushing, Idler	24	123211	Bolt, HCS, 5/16-18 x 3/4, Gr5, zp
8	180121	Pulley, Flat Idler, 3.25	25	256421	V-Belt
9	150691	Bolt, 3/8-16 x 2-1/2", Full, Gr5	26	160071	Nut, 5/8-18, Nylon Lock
10	123211	Bolt, HCS, 5/16-18 x 3/4, Gr5, zp	27	136491	Label, Danger
11	110761	Nut, Nylon Lock, 5/16-18	28	148231	Label, Safety Icons
12	257061	Deck, 24", w/ Labels	29	164371	Label, Brush Belt Guide, 5" x 3"
13	129601	Bolt, HCS, 3/8-16 x 3, Gr5, zp	30	124371	Label, American Flag
14	246771	Key, Woodruff, 3/16" x 3/4"	31	240531	Label, 4" DR Logo, Silver
15	257031	Blade, Brush, 24"	32	247321	Pulley, 6-1/2"
16	101771	Washer, .640 ID x 2-1/2 OD	33	247351	Brush Bar, FBM PRE
17	234021	Bolt, HCS, 5/8-18 x 1-1/2"	34	212581	Washer, Slit Lock, 5/8", GR8

Schematic – BRUSH DECK ASSEMBLY



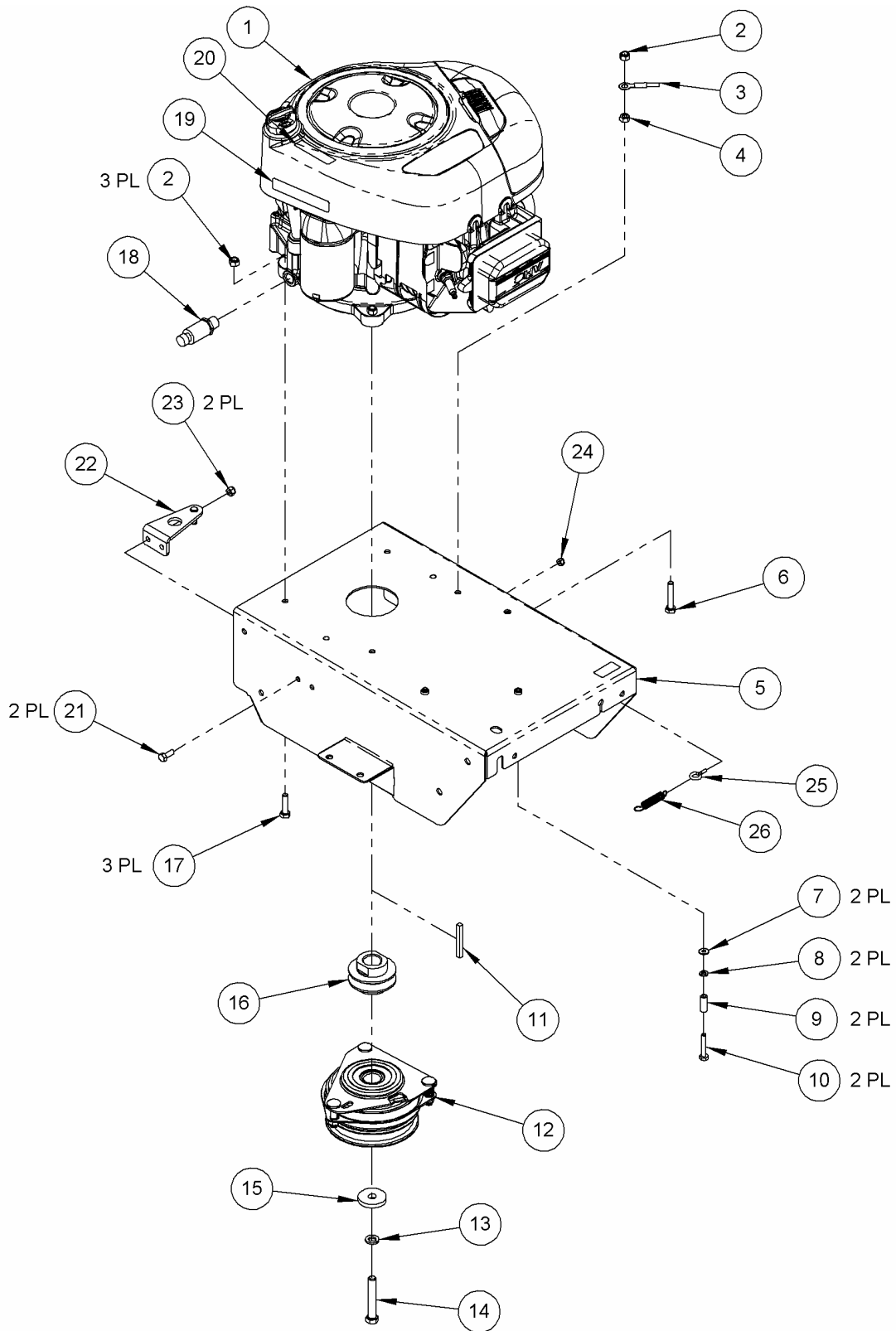
042810

Parts List – ENGINE AND CLUTCH ASSEMBLY

NOTE: Part numbers listed are available through DR Power Equipment.

<u>Ref#</u>	<u>Part#</u>	<u>Description</u>	<u>Ref#</u>	<u>Part#</u>	<u>Description</u>
1	256401	Engine, 12.5Hp, B&S m/s IntekVert	14	223241	Bolt, HCS, 7/16-20 x 2.75, Gr8, yzp
2	110761	Nut, Nylon Lock, 5/16-18	15	191301	Washer, Flat, .469ID x 1.62OD, .25L, Gr5
3	256411	Wire Harness, 12.5 B&S	16	191211	Pulley, V-belt, 2.75"
4	110691	Nut, Finish, 5/16-18, zp	17	134431	Bolt, HCS, 5/16-18 x 1-1/2", Gr5, zp
5	247271	Frame, Rear	18	222451	Bolt, HCS, 7/16-20 x 2.75, Gr8, yzp
6	150451	Bolt, HCS, 5/16-18 x 1-3/4, Gr5, zp	19	136831	Label, Caution, Hot Surface
7	112371	Washer, Flat, 10-24, USS	20	127811	Label, Warning, Add Oil
8	101811	Washer, Split Lock, 1/4, zp	21	157301	Bolt, HCS, 1/4-20 X 3/4, Gr5 zp
9	111871	Spacer, .25 ID x .375OD x 1L	22	257111	Bracket Assembly, Clutch
10	101451	Bolt, HCS, 1/4-20 x 1-1/2, Gr2, zp	23	110731	Nut, Nylon Lock, 1/4-20
11	106361	Key, Square, .250 x 2.25 L	24	118731	Nut, Nylon Lock, 10-24
12	191241	Clutch, Electric, 75ft-lb, 3.86 amp	25	175521	Eyebolt, 10-24 X 1/2"
13	222521	Washer, Split, 7/16, Gr8	26	150501	Spring, Extension, .438" OD X 2.5" FL

Schematic – ENGINE AND CLUTCH ASSEMBLY



042810

Notes:

PREMIER DR[®] FIELD and BRUSH MOWER



2-Year Limited Warranty

Terms and Conditions

The PREMIER DR[®] FIELD and BRUSH MOWER is warranted for two (2) years against defects in materials or workmanship when put to ordinary and normal consumer use; ninety (90) days for any other use.

For the purposes of all the above warranties, "ordinary and normal consumer use" refers to non-commercial residential use and does not include misuse, accidents or damage due to inadequate maintenance.

DR Power Equipment certifies that the PREMIER DR[®] FIELD and BRUSH MOWER is fit for ordinary purposes for which a product of this type is used. DR Power Equipment however, limits the implied warranties of merchantability and fitness in duration to a period of two (2) years in consumer use, ninety (90) days for any other use.

The 2-Year Limited Warranty on the PREMIER DR[®] FIELD and BRUSH MOWER starts on the date the machine ships from our factory. The 2-Year Limited Warranty is applicable only to the original owner.

The warranty holder is responsible for the performance of the required maintenance as defined by the manufacturer's owner's manuals. The warranty holder is responsible for replacement of normally wearing parts such as the Drive Belts, Blade, Filters (Air and Oil), Battery and Spark Plug. Accessories to the machine are not covered by this warranty.

During the warranty period, the warranty holder is responsible for the machine transportation charges, if required. During the warranty period, warranty parts will be shipped by standard method at no charge to the warranty holder. Expedited shipping of warranty parts is the responsibility of the warranty holder.

SOME STATES DO NOT ALLOW LIMITATIONS ON THE LENGTH OF IMPLIED WARRANTIES, SO THE ABOVE LIMITATIONS MAY NOT APPLY TO YOU.

DR Power Equipment shall not be liable under any circumstances for any **incidental or consequential damages or expenses** of any kind, including, but not limited to, cost of equipment rentals, loss of profit, or cost of hiring services to perform tasks normally performed by the PREMIER DR[®] FIELD and BRUSH MOWER.

SOME STATES DO NOT ALLOW THE EXCLUSION OR LIMITATION OF INCIDENTAL OR CONSEQUENTIAL DAMAGES, SO THE ABOVE LIMITATIONS MAY NOT APPLY TO YOU.

THIS WARRANTY GIVES YOU SPECIFIC LEGAL RIGHTS, AND YOU ALSO HAVE OTHER RIGHTS, WHICH VARY FROM STATE TO STATE.

Daily Checklist for the PREMIER DR FIELD and BRUSH MOWER

WARNING

Shut down the engine, remove the spark plug wire and wait 5 minutes before performing any maintenance procedure or inspection on the Mower.

To help maintain your PREMIER DR FIELD and BRUSH MOWER for optimum performance, we recommend you follow this checklist each time you use your Mower.

- [] OIL: With the machine on a level surface, check the Engine oil level with the Dipstick and add more if necessary (only add oil to the level indicated on the Dipstick - do not overfill). Use SAE 30 high detergent motor oil.
- [] GAS: Fill the gas tank with clean, fresh, unleaded gasoline.
- [] TIRES: Check Tire Pressure
- [] ENGINE AIR COOLING SYSTEM: It is very important to keep the Engine clean of debris. Remove grass and other built-up materials from the Air Intake Screen before, during, and after you mow. Regularly remove debris from the Blower Housing and Cooling Fins. A dirty Engine retains heat and can cause damage to the internal Engine parts.
- [] BELTS: Check the Belts for wear, proper alignment and tension.
- [] BLADE: Check the Blade for tightness, nicks and wear. Remove any wrapped weeds and grass from the Blade Bearing Housing to prevent buildup.
- [] GENERAL CONDITION: Check the general condition of the machine, e.g.; nuts, bolts, welds etc.

End of Season and Storage

WARNING

Shut down the engine, remove the spark plug wire and wait 5 minutes before performing any maintenance procedure or inspection on the Mower.

NOTE: Please refer to the Engine Owner's Manual for engine-specific procedures.

- Change the oil.
- Remove the Spark Plug and pour about 1 ounce of motor oil into the Cylinder hole. Replace the Plug and pull the Recoil Starter Rope until you feel strong resistance. This will coat the piston and seat the valves to prevent moisture buildup.
- Clean/replace the Air Filter(s).
- Clean dirt and debris from the Cylinder Head Cooling Fins, Blower Housing, Debris Screen, and Muffler area of the Engine.
- If your Engine has a Fuel Filter, replace it.
- If your PREMIER DR FIELD and BRUSH MOWER will be idle for more than 30 days, we recommend using a gas stabilizer. This will prevent sediment from gumming up the Carburetor. If there is dirt or moisture in the gas or tank, remove it by draining the tank. Completely fill the tank with fresh, unleaded gas and add the appropriate amount of stabilizer or gasoline additive. Run the Engine for a short time to allow the additive to circulate.
- Remove any wrapped weeds from the Blade Bearing Housing. Clean grass and debris from the top and underneath the mower Deck with a stiff brush.
- Check the Blade for nicks and wear. Remove the Blade and sharpen, or have it professionally sharpened if needed.
- Perform the lubrication as outlined on page 15.



75 MEIGS ROAD, P.O. BOX 25, VERGENNES, VERMONT 05491