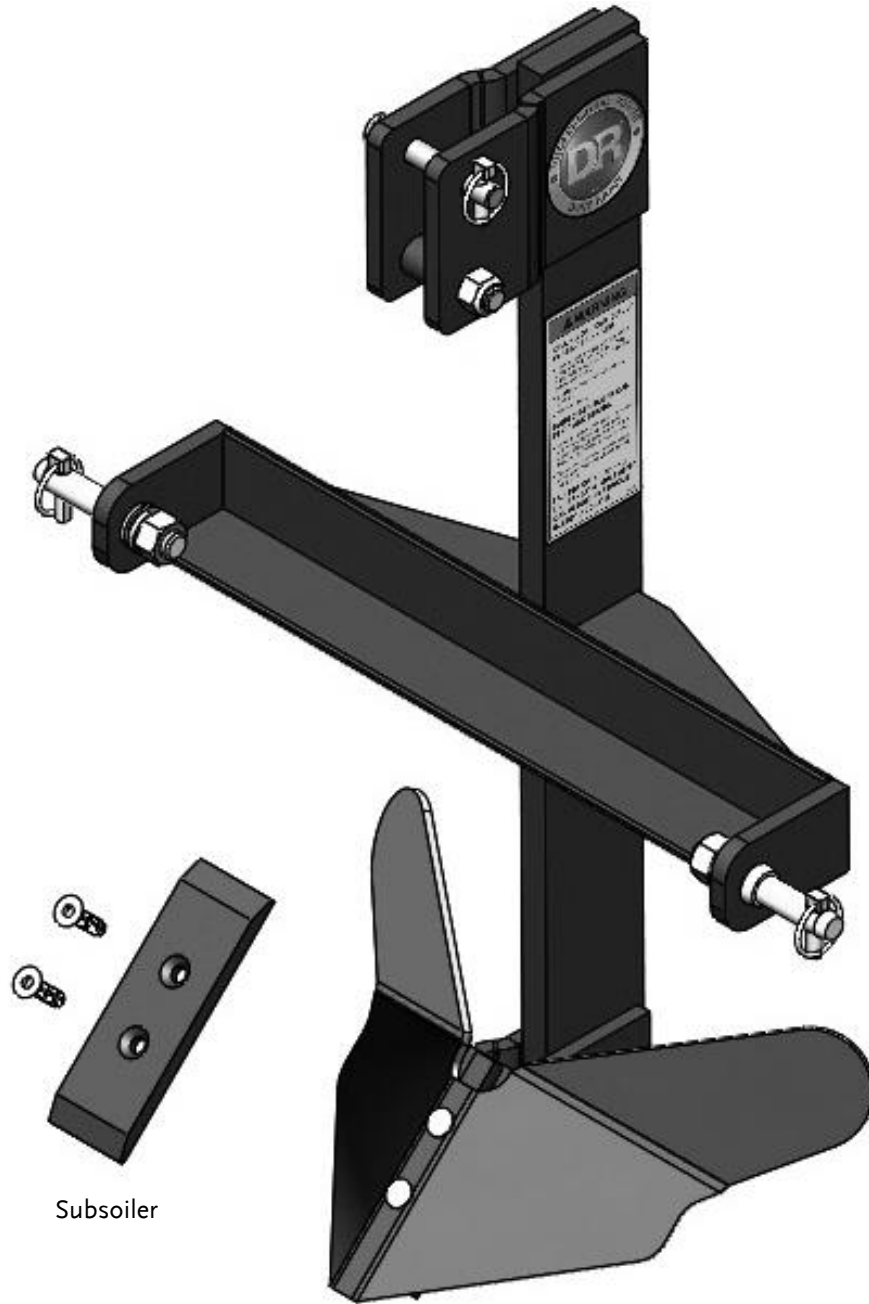


# DR® 3PT SUBSOILER/MIDDLE BUSTER COMBO



## SAFETY & OPERATING INSTRUCTIONS



Subsoiler

Middle Buster

DR® Power Equipment  
Toll-free phone: 1-800-DR-OWNER (376-9637)  
Fax: 1-802-877-1213  
Website: [www.DRpower.com](http://www.DRpower.com)

Order No. \_\_\_\_\_

### WARNING

Read and understand this manual and all instructions before operating the DR® 3PT SUBSOILER/MIDDLE BUSTER COMBO.



## Table of Contents

Chapter 1: General Safety Rules.....	4
Chapter 2: Setting Up the DR 3PT SUBSOILER/MIDDLE BUSTER COMBO .....	7
Chapter 3: Operating The DR® 3PT SUBSOILER/MIDDLE BUSTER COMBO .....	11
Chapter 4: Maintaining The DR® 3PT SUBSOILER/MIDDLE BUSTER COMBO .....	13
Chapter 5: Troubleshooting .....	14
Chapter 6: Parts Lists, Schematic Diagrams and Warranty .....	16

### *Conventions used in this manual*

---

#### **WARNING**

This indicates a hazardous situation which, if not avoided, ***could*** result in death or serious injury.

---

---

#### **CAUTION**

This indicates a hazardous situation which, if not avoided, ***could*** result in minor or moderate injury.

---

---

#### **NOTICE**

This information is important in the proper use of your machine. Failure to follow this instruction could result in damage to your machine or property.

---

### *Additional Information and Potential Changes*

DR Power Equipment reserves the right to discontinue, change, and improve its products at any time without notice or obligation to the purchaser. The descriptions and specifications contained in this manual were in effect at printing. Equipment described within this manual may be optional. Some illustrations may not be applicable to your machine.

## Chapter 1: General Safety Rules

### **WARNING**

Read this safety & operating Instructions manual before you use the DR® 3PT SUBSOILER/MIDDLE BUSTER COMBO. Become familiar with the operation and service recommendations to ensure the best performance from your machine. If you have any questions or need assistance, please contact us at [www.DRpower.com](http://www.DRpower.com) or call toll-free 1-800-DR-OWNER (376-9637) and one of our Technical Support Representatives will be happy to help you.

### **Labels**

Your DR® 3PT SUBSOILER/MIDDLE BUSTER COMBO carries prominent labels as reminders for its proper and safe use. Shown below are copies of all the Safety and Information labels that appear on the equipment. Take a moment to study them and make a note of their location on your DR® 3PT SUBSOILER/MIDDLE BUSTER COMBO as you set up and before you operate the unit. Replace damaged or missing safety and information labels immediately.

### **WARNING**

**FALLING OFF CAN RESULT IN BEING RUN OVER.**

- Tractor must be equipped with ROPS (or ROPS CAB) and seat belt. Keep foldable ROPS systems in "locked up" position at all times.
- Buckle up! Keep seat belt securely fastened.
- Allow no riders.

**RAISED IMPLEMENT CAN DROP AND CRUSH.**

- Never go underneath raised implement which can drop due to hydraulic system failures, movement of control levers or mechanical linkage failures.
- Service work does not require going underneath implement. Read manual instructions.

**FALLING OFF OR GOING UNDERNEATH IMPLEMENT CAN RESULT IN SERIOUS INJURY OR DEATH.**

397221

#39722

### **WARNING**

**CRUSHING AND PINCHING HAZARD**

- Be extremely careful handling various parts of the machine. They are heavy and hands, fingers, feet, and other body parts could be crushed or pinched between tractor and implement.
- Operate tractor controls from tractor seat only.
- Do not stand between tractor and implement when tractor is in gear.
- Make sure parking brake is engaged before going between tractor and implement.
- Stand clear of machine while in operation or when it is being raised or lowered.

**FAILURE TO FOLLOW THESE INSTRUCTIONS COULD RESULT IN SERIOUS INJURY OR DEATH.**

397231

#39723

### **CAUTION**

**TO AVOID SERIOUS INJURY:**

- Read Operator's Manual before operating, servicing, or repairing equipment. Follow all safety rules and instructions. (Manuals are available from your selling dealer.)
- Never allow riders.
- Keep bystanders away from equipment during operation.
- Operate from tractor seat only.
- Keep all shields in place and in good condition.
- Lower equipment to ground, stop engine, remove key, and set brake before dismounting tractor.
- Never allow children or untrained persons to operate equipment.

397241

#39724

## Protecting Yourself and Those Around You

---

### **WARNING**

Always take the following precautions when operating this SUBSOILER/MIDDLE BUSTER COMBO:

- Always wear protective goggles or safety glasses with side shields while using the DR® 3PT SUBSOILER/MIDDLE BUSTER COMBO to protect your eyes from possible thrown debris.
  - Wear shoes with non-slip treads when using your DR® 3PT SUBSOILER/MIDDLE BUSTER COMBO. If you have safety shoes, we recommend wearing them. Do not use the DR® 3PT SUBSOILER/MIDDLE BUSTER COMBO while barefoot or wearing open sandals.
  - Use ear protectors or ear plugs rated for at least 20 dB to protect your hearing from Tractor noise.
  - Wear Gloves to protect your hands from injury.
- 

## Operating the DR 3PT SUBSOILER/MIDDLE BUSTER COMBO Safely

---

### **WARNING**

You must operate the DR 3PT SUBSOILER/MIDDLE BUSTER safely. Unsafe operation can create a number of hazards for you. Always take the following precautions when using this DR 3PT SUBSOILER/MIDDLE BUSTER.

- Read, understand, and follow all instructions in this manual. Be thoroughly familiar with the proper use of your DR® 3PT SUBSOILER/MIDDLE BUSTER before using.
  - Thoroughly inspect the area where your DR 3PT SUBSOILER/MIDDLE BUSTER will be used, and remove all stones, sticks, wire, pet supplies, or lawn toys, and any other foreign objects that you could run over. Also, note the location of stumps, and other possible hazards that you should avoid during operation.
  - Be aware of your surroundings when operating the DR 3PT SUBSOILER/MIDDLE BUSTER, e.g. ditches, culverts, drop-offs, and hills.
  - Never allow people who are unfamiliar with these instructions to use the DR® 3PT SUBSOILER/MIDDLE BUSTER.
  - To be safe, do not operate the Subsoiler near small children or pets, and never allow children to operate the DR® 3PT SUBSOILER/MIDDLE BUSTER. Stop the Tractor when another person or pet approaches.
  - Do not allow people to ride on DR® 3PT SUBSOILER/MIDDLE BUSTER.
  - If you have to stop to remove any debris from the DR 3PT SUBSOILER/MIDDLE BUSTER, always shut off the Tractor's engine, set the parking brake and remove the key.
  - Do not, under any conditions, remove, bend, cut, fit, weld, or otherwise alter standard parts on the DR 3PT SUBSOILER/MIDDLE BUSTER. Modifications to your machine could cause personal injuries and will void your warranty.
  - While using the DR 3PT SUBSOILER/MIDDLE BUSTER, don't hurry or take things for granted.
  - Do not operate the DR 3PT SUBSOILER/MIDDLE BUSTER when under the influence of alcohol or medication.
  - Use the DR 3PT SUBSOILER/MIDDLE BUSTER only in daylight or good artificial light
  - Inspect your Tractor's hydraulic system to assure that it is in proper working order. Refer to your Tractors operators' manual for maintenance and safety instructions.
  - For safest operation and to prevent serious injury or death, use a Tractor equipped with a Roll-Over Protective System (ROPS)
  - To prevent serious injury or death when using the DR 3PT SUBSOILER/MIDDLE BUSTER a minimum 20% of the combined Tractor and equipment weight must be kept on the front wheels. Weight distribution can be obtained with the use of front wheel weights, front Tractor weights or a front end loader. Do not exceed the Tractor's ROPS weight certification while attaining the combined minimum 20% of Tractor and Implement weight on the front wheel. For the best accurate results, weigh your Tractor and DR 3PT SUBSOILER/MIDDLE BUSTER.
  - When operating on or near slopes or sharp dips, reduce speed and take care when making sharp turns or changing directions to minimize loss of control or tipping. Avoid making sudden stops or starts on slopes.
  - Operate Tractor controls from the Tractor seat only.
  - Never leave the DR 3PT SUBSOILER/MIDDLE BUSTER. If you leave the area, shut off the Tractor's engine, set the parking brake and remove the key.
-

## *Operating the DR 3PT SUBSOILER/MIDDLE BUSTER COMBO Safely (continued)*

---

### **CAUTION**

The DR 3PT SUBSOILER/MIDDLE BUSTER must be operated safely to prevent or minimize the risk of minor or moderate injury. Unsafe operation can create a number of hazards for you. Always take the following precautions when operating this DR® 3PT SUBSOILER/MIDDLE BUSTER:

- Keep in mind that the operator or user is responsible for accidents or hazards occurring to other people, their property, and themselves.
  - Do not use the DR 3PT SUBSOILER/MIDDLE BUSTER to drag, tow, or carry items.
  - Never leave the DR 3PT SUBSOILER/MIDDLE BUSTER unattended. If you leave the area, shut off the Tractor, Set the parking brake and remove the key.
  - Keep all Nuts and Bolts tight and keep the equipment and attachments in good operating condition.
  - Use only manufacturer-recommended replacement parts.
- 

### *Safety for Children and Pets*

---

### **WARNING**

Tragic accidents can occur if the operator is not alert to the presence of children and pets. Children and pets are often attracted to the tractor activity. **Never** assume that children or pets will remain where you last saw them.

- Keep children out of the working area and under the watchful care of a responsible adult.
  - Be alert, stop and turn the tow vehicle off if children or pets enter the work area.
  - Never allow children to operate the DR 3PT SUBSOILER/MIDDLE BUSTER.
  - Never allow children or pets to ride on the Tractor or the DR 3PT SUBSOILER/MIDDLE BUSTER.
- 

### *California Proposition 65*

---

### **WARNING**

California Proposition 65:

- This product contains or emits chemicals known to the State of California to cause cancer, birth defects, and other reproductive harm.
- 

### *A Note to All Users*

No list of warnings and cautions can be all-inclusive. If situations occur that are not covered by this manual, the operator must apply common sense and operate this DR 3PT SUBSOILER/MIDDLE BUSTER in a safe manner. Contact us at [www.DRpower.com](http://www.DRpower.com) or call 1-800-DR-OWNER (376-9637) for assistance.

## Chapter 2: Setting Up the DR 3PT SUBSOILER/MIDDLE BUSTER COMBO

It may be helpful to familiarize yourself with the controls and features of your DR® 3PT SUBSOILER/MIDDLE BUSTER as shown in **Figure 1** before beginning these procedures. If you have any questions at all, please feel free to contact us at [www.DRpower.com](http://www.DRpower.com) or call 1-800-DR-OWNER (376-9637) for assistance.

### **DR 3PT SUBSOILER/MIDDLE BUSTER COMBO Features**

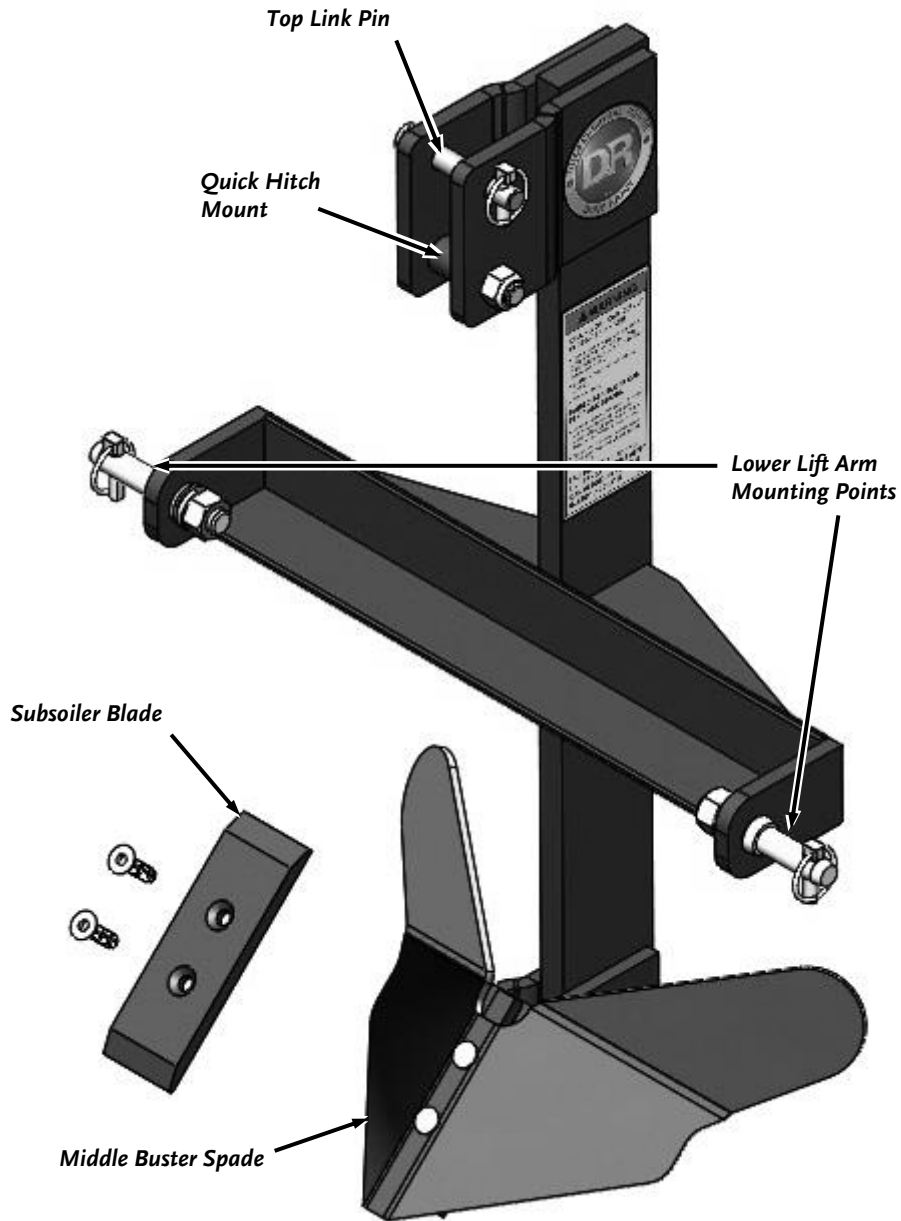


Figure 1

## Specifications

Tractor Requirements	20-45 HP Category 1 Tractor
3-Point Hitch Linkage Specs	Category 1 Hitch
Operating Speed	Max Towing Speed - Low Gear 5 MPH
Middle Buster Spade	20" W
Subsoiler Blade	Reversible, Heat Treated 8.75" L X 3" W Blade.
Digging Depth	Max Depth 18"
3PT Quick Hitch Compatible	Yes
Weight	115 LBS
Dimensions	40" Tall X 9" Length X 26" Wide.

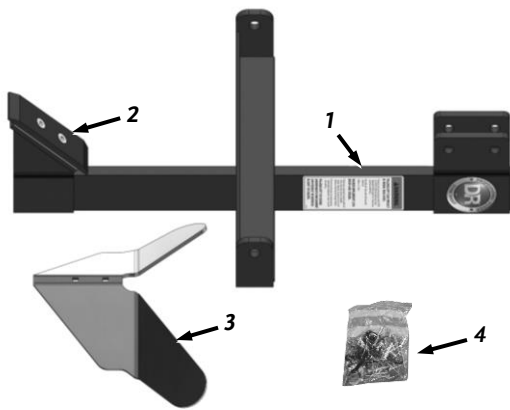


Figure 2

### Main Parts (Figure 2 and Table below)

Item#	Description	Qty
1	.....Frame, Middle Buster/Subsoiler.....	1
2	.....Subsoiler Blade.....	1
3	.....Spade, Middle Buster.....	1
4	.....Hardware Bag.....	1

Use **Figure 2** and the list above to check the parts you received in the package. If you have any questions, please contact us at [www.DRpower.com](http://www.DRpower.com) or call 1-800-DR-OWNER (376-9637) for assistance.

### Hardware Bag (Figure 3 And Table Below)

Index#	Part#	Description	Qty
1	.....39329.....	.....Spacer, Middle Buster.....	1
2	.....40034.....	.....Pin, Top Link, PTO Class 1.....	1
3	.....39415.....	.....Spacer.....	1
4	.....39375.....	.....Nut, Nylon Lock, M20 X 2.5, Cl8, ZP.....	1
5	.....32380.....	.....Nut, Hex, 7/8-9, YZP.....	2
6	.....32379.....	.....Washer, Lock, 7/8, YZP.....	2
7	.....26568.....	.....Shims, 1" ID X 1.38" OD, X 16"T.....	2
8	.....32378.....	.....Pin, Draw, PTO Class 1.....	2
9	.....32396.....	.....Pin, Linch, 7/16" X 1.5", YZP.....	3
10	.....39425.....	.....Bolt, Carriage, M10 X 1.5mm X 50mm.....	2
11	.....39374.....	.....Bolt, M20 X 2.5mm X 100mm.....	1
12	.....1000030584.....	.....Nut, Nylon Lock, M12 X 1.75, Cl8, ZP.....	2

Use **Figure 3** and the list above to check the parts you received in the Hardware Bag. If you have any questions, please contact us at [www.DRpower.com](http://www.DRpower.com) or call 1-800-DR-OWNER (376-9637) for assistance.

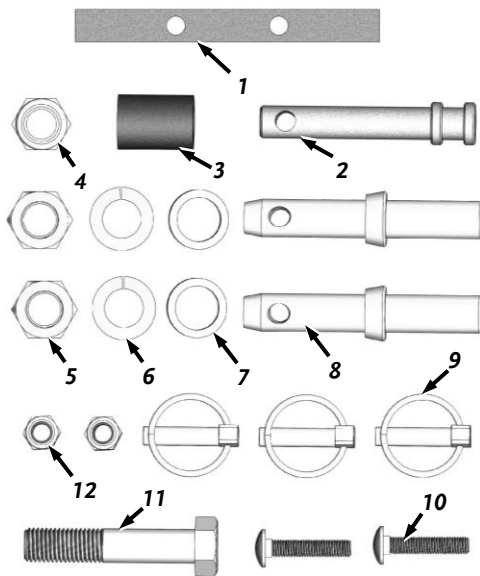


Figure 3



## Assembly

### Tools Needed:

- Large Adjustable Wrenches.
- #3 Phillips Head Screwdriver or 5/16" Punch.
- Two 30mm Wrenches.

1. Locate a clean flat surface to assemble the DR® 3PT Subsoiler/Middle Buster.
2. Position the Frame on the working surface (**Figure 4**).
3. Install the M20 X 100 Bolt, Spacer and M20 Locknut in the second hole from the top in the Frame (**Figure 5**). Tighten using two 30mm Wrenches
4. Install the PTO Class 1 Draw Pins to the Frame (**Figure 6**). Loosely secure with 1"ID X 1.38"OD Shim, 7/8"Lock Washer and 7/8"Hex Nut.
5. Insert a #3 Phillips Head Screwdriver or 5/16" Punch into the hole of the Draw Pin. Hold the Screwdriver or Punch, then tighten the Nut with a Large Adjustable Wrench.

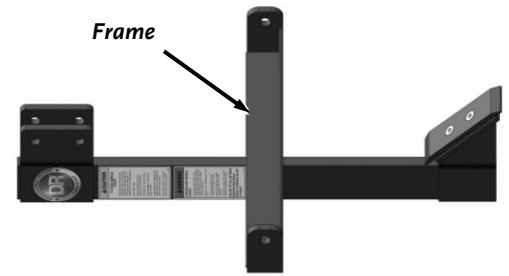


Figure 4

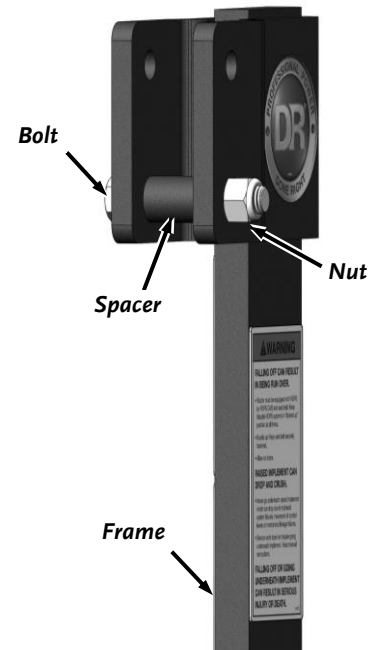


Figure 5

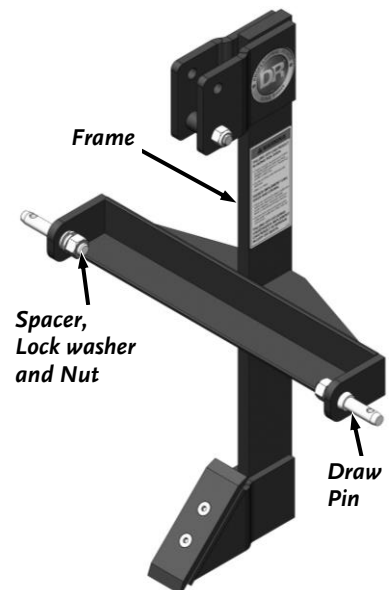


Figure 6

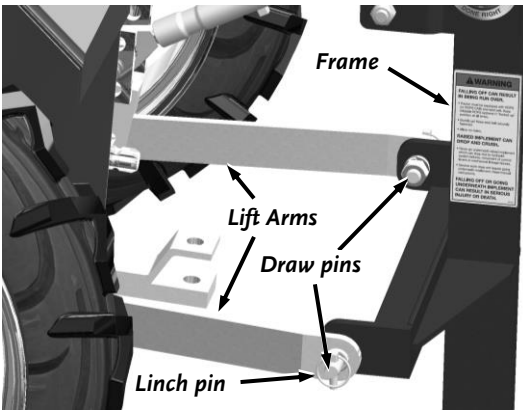


Figure 7

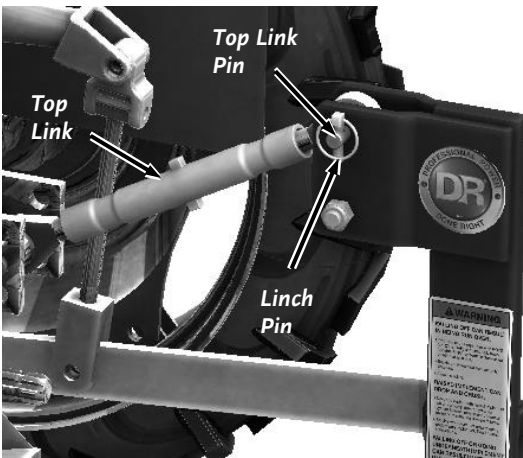


Figure 8

### Attaching The DR 3PT SUBSOILER/MIDDLE BUSTER COMBO to the Tractor

1. Position the rear of the Tractor centered at the 3PT SUBSOILER/MIDDLE BUSTER COMBO.
2. With assistance lift the 3PT SUBSOILER/MIDDLE BUSTER COMBO up to the Lift Arms of the Tractor.
3. Slide the Lift Arms onto the Draw Pins and secure with the Linch Pins (**Figure 7**).
4. Position the Top Link into the Frame and align the holes in the Top Link with the holes in the Frame.
5. Insert the Top Link Pin into the aligned holes and secure with the Linch Pin (**Figure 8**).
6. Refer to your Tractor Operator's Manual for specific instructions on how to adjust the Lower Lift Arms as needed to center the 3PT SUBSOILER/MIDDLE BUSTER COMBO to keep the Frame from swaying side to side.

## Chapter 3: Operating The DR® 3PT SUBSOILER/MIDDLE BUSTER COMBO

---

It may be helpful to better familiarize yourself with the features of your SUBSOILER/MIDDLE BUSTER by reviewing **Figure 1** in Chapter 2 before beginning the steps outlined in this chapter.

### *Operating Safety*

#### **! WARNING**

- Never allow anyone to operate the DR® 3PT SUBSOILER/MIDDLE BUSTER without first reading and understanding all instructions in this manual. Be thoroughly familiar with the operation and the proper use of your Subsoiler/Middle Buster before using.
  - Never let people ride on the Subsoiler.
  - Always check for objects in the DR 3PT SUBSOILER/MIDDLE BUSTER'S path before moving.
  - Be sure to check over all Pins, Bolts, Nuts and connections prior to use. Replace any worn or damaged parts before using.
  - To prevent swaying of the Implement, it is recommended to use stabilizer bars, adjustable sway chains or sway blocks.
- 

### *Operating Parameters*

Use only the recommended vehicle for the DR 3PT SUBSOILER/MIDDLE BUSTER.

- **Utility Tractor**
  - 20-45 HP.
  - 3 PT Hitch Category 1

### *Operating Tips*

- Avoid large rocks, embedded ledge, cattle guards, or similar obstructions.
  - Use Low Gear when using the DR 3PT SUBSOILER/MIDDLE BUSTER. This will give you the breaking action. – Do not exceed 5 MPH while working.
  - Always Pass diagonally through sharp dips.
  - Avoid working around sharp drops to prevent hanging up the Tractor or Implement.
  - Reduce ground speed when working around slopes or rough terrain.
- 

#### **NOTICE**

Frequently check the tightness of the Bolts that fasten the Subsoiler Blade and Middle Buster Spade to the frame.

---

### *Subsoiler Operation*

The 3PT SUBSOILER can be used for various landscape work including:

- Break up and loosen Hardpan which can aide in water drainage. For best results, do not use in wet soil as the soil may compact further and not break up.
- Loosen compacted soil beneath normal Tilling or Plowing depth, aiding in better vegetation growth. This is recommended every 2-3 years as normal field traffic can compact the soil. It is recommended to space your rows 30-48" apart.
- To help breakup and cut roots along fields. Tree roots will grow into the field and can take away nutrients from your crops.

Be prepared to stop, shut off the Tractors engine, set the parking brake, and make adjustments to the 3PT SUBSOILER's Top Link while working. The 3PT SUBSOILER works best when the beam is perpendicular to the ground or the top of the Frame slightly pointed towards the tractor when fully dug into the soil.

1. Lower the 3PT SUBSOILER to the ground. If Your Tractor is Equipped with Hydraulic “Draft” control, set the Draft function to maximize traction.
2. Drive forward and let the 3PT SUBSOILER work into the ground.
3. Adjust Tractors Top Link as needed for desired working depth.
4. Expect to make several passes, increasing the depth with each pass, in hard or dry soil conditions as it will take more effort to break up compacted dry soil.

## Attaching the Middle Buster Spade

### **! WARNING**

- If your Tractor has a Lockout Valve, use it to support the 3PT SUBSOILER/MIDDLE BUSTER off the ground. We recommend also placing blocks under the SUBSOILER/MIDDLE BUSTER Frame to ensure it will not lower accidentally while adjustment/maintenance is performed to take pressure off the hydraulic system. Shut off the Tractor, remove the key, and set the parking brake before performing any of the following procedures.
- To avoid injury, never position yourself between the 3PT SUBSOILER/MIDDLE BUSTER and the ground or the Tractor.

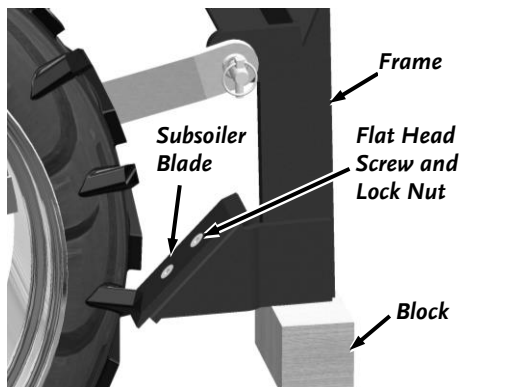


Figure 9

#### Tools Needed:

- 10mm Allen Wrench
- 16mm Wrench
- 18mm Wrench
- Support Block

1. Lower the 3PT SUBSOILER/MIDDLE BUSTER on to a Support Block (**Figure 9**).
2. Remove the two M12 Flat Head Screws, and M12 Lock Nuts using a 10mm Allen Wrench and 18mm Wrench.
3. Remove the Subsoiler Blade. Store the Flat Head Screws, Lock Nuts and Subsoiler Blade together.
4. Attach the Middle Buster Spacer and Middle Buster Spade to the Frame, securing with two M10 Carriage Bolts and M10 Lock Nuts (**Figure 10**). Tighten using a 16mm Wrench.

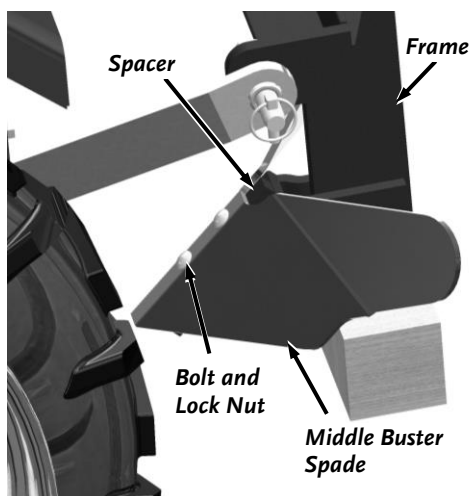


Figure 10

### **Middle Buster Spade Operation**

The 3PT MIDDLE BUSTER can be used for various plowing work including:

- Making drainage ditches
- Digging up potatoes
- Plowing planting rows

1. Lower the 3PT MIDDLE BUSTER to the ground. If Your Tractor is Equipped with Hydraulic “Draft” control, set the Draft function to maximize traction.
2. Drive forward and let the 3PT MIDDLE BUSTER work into the ground.
3. Adjust the Tractors Top Link as needed for desired working depth.

## Chapter 4: Maintaining The DR® 3PT SUBSOILER/MIDDLE BUSTER COMBO

Regular maintenance is the way to ensure the best performance and long life of your machine. Please refer to this Chapter for maintenance intervals and procedures.

### **⚠ WARNING**

If your Tractor has a Lockout Valve, use it to support the 3PT SUBSOILER/MIDDLE BUSTER off the ground. We recommend also placing blocks under the Rear Blade to ensure it will not lower accidentally while adjustment/maintenance is performed to take pressure off the hydraulic system. Shut off the Tractor, remove the key, and set the parking brake before performing any maintenance.

### **Regular Maintenance Checklist**

PROCEDURE	BEFORE EACH USE
Check general equipment condition e.g., Nuts, Bolts, welds, etc.	▲
Use a Hose or Pressure Washer to wash the 3PT SUBSOILER/MIDDLE BUSTER.	▲
Check condition of Subsoiler Blade and Middle Buster Spade	▲

### **Cleaning the 3PT SUBSOILER.**

- To Keep your Implement clean and clear of debris Use a Hose or Pressure Washer to wash the 3PT SUBSOILER/MIDDLE BUSTER.

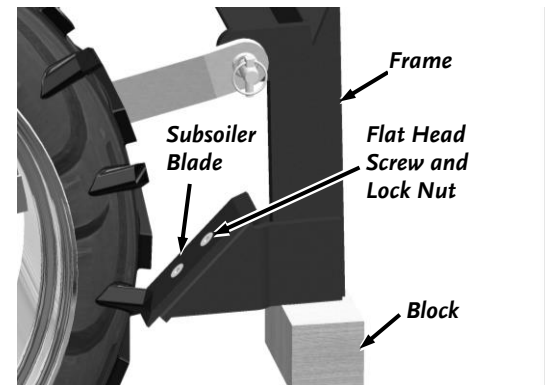
### **Replacing/Rotating the Subsoiler Blade.**

The Subsoiler Blade is double edged and reversible for extended life

#### **Tools Needed:**

- 10mm Allen Wrench
- 18mm Wrench
- Support Block

1. Lower the 3PT SUBSOILER/MIDDLE BUSTER frame on to a Support Block (**Figure 11**).
2. Remove the Flat Head Screws and Lock Nuts using an 10mm Allen Wrench and 18mm Wrench.
3. Rotate the Subsoiler Blade to the unused Edge (skip to step 4 if you are replacing the Blade).
4. Install the Subsoiler Blade and secure with the Flat Head screws and Lock Nuts. Tighten using a 10mm Allen Wrench and 18mm Wrench.



**Figure 11**

## Chapter 5: Troubleshooting

Most problems are easy to fix. Consult the Troubleshooting Table below for common problems and their solutions. If you continue to experience problems, contact us at [www.DRpower.com](http://www.DRpower.com) or call toll-free 1-800-DR-OWNER (376-9637) for support.

### **WARNING**

Before performing any maintenance, you must first shut off the Tractor, remove the key and set the parking brake.

### **Troubleshooting Table**

<b>SYMPTOM</b>	<b>POSSIBLE CAUSE &amp; SOLUTION</b>
<i>The Spade will not penetrate the soil.</i>	<ul style="list-style-type: none"><li>⇒ The soil conditions are too hard.</li><li>⇒ There is too much forward pitch on the Spade. Adjust the pitch to bring the Frame closer to the Tractor.</li><li>⇒ Check the 3point settings, these should be set in draft.</li><li>⇒ Spade is badly worn. Replace if necessary.</li></ul>
<i>Tractor Tires are slipping excessively.</i>	<ul style="list-style-type: none"><li>⇒ Not enough traction. Change draft settings.</li><li>⇒ Operating too deep in soil. Operate at a shallower depth.</li><li>⇒ Ground is wet or too soft. Wait for ideal soil conditions.</li></ul>
<i>The Tractor is working too hard and requires more power.</i>	<ul style="list-style-type: none"><li>⇒ The Implement is digging in too deep. Raise the Implement up.</li><li>⇒ The Spade is worn. Replace the worn Spade.</li><li>⇒ The soil conditions are not right. Wait for better soil conditions.</li></ul>
<i>The front of the Tractor is light.</i>	<ul style="list-style-type: none"><li>⇒ The hitch load on the Tractor is too heavy. Add weight to the front of the tractor.</li><li>⇒ Raise the Implement up a little to take less of a bite.</li></ul>
<i>The material is coming out in large clods.</i>	<ul style="list-style-type: none"><li>⇒ The soil conditions are too hard or dry. Wait for better soil conditions.</li><li>⇒ Operating at too shallow of a depth. Operate deeper in the soil.</li></ul>



## Chapter 6: Parts Lists, Schematic Diagrams and Warranty

---

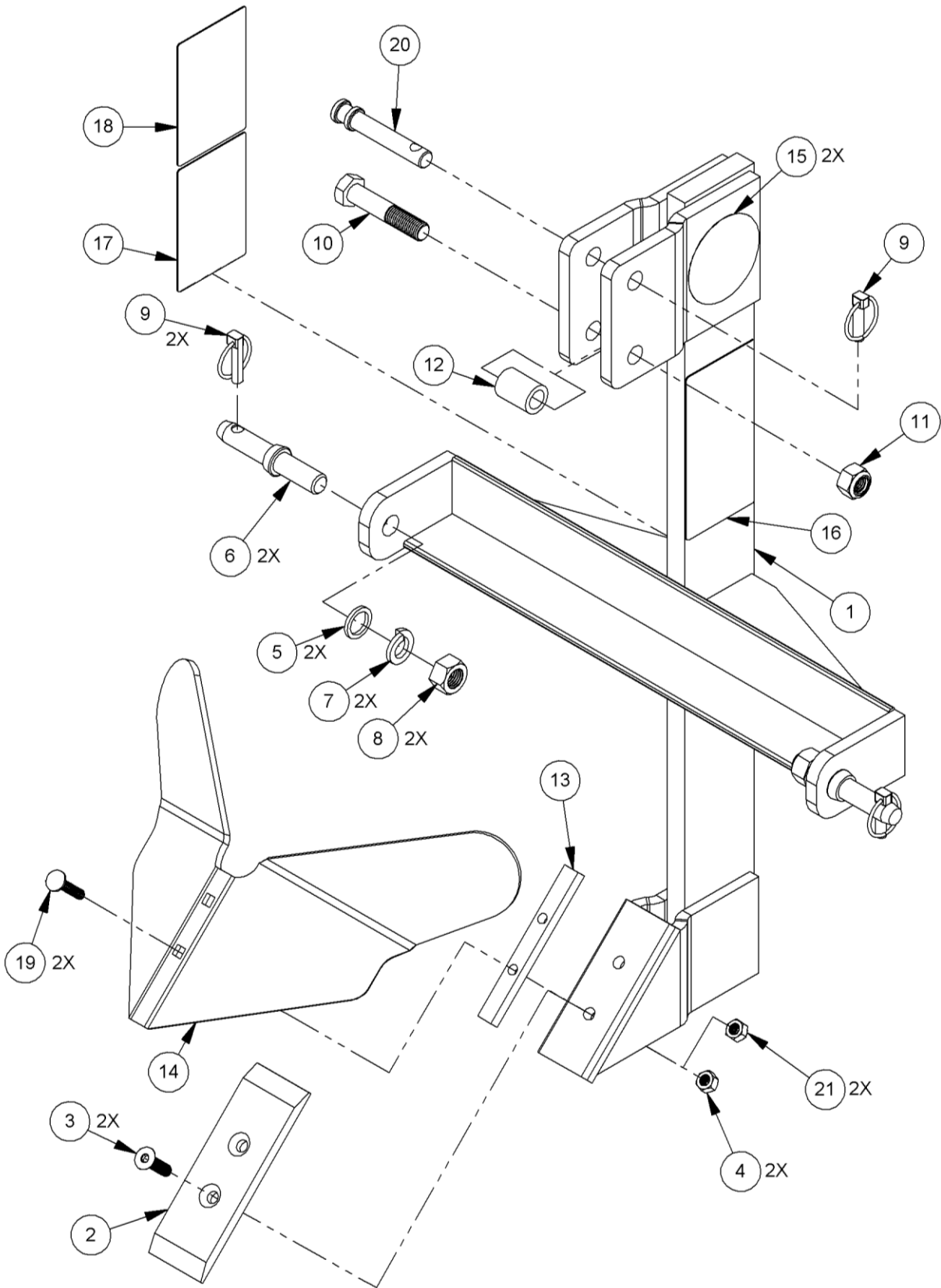
### Parts List – DR® SUBSOILER/MIDDLE BUSTER ASSEMBLY

*Note: Part numbers listed are available through DR Power Equipment.*

Ref#	Part#	Description	Ref#	Part#	Description
1	10000031450	Frame, Middle Buster/Subsoiler, W/Labels	12	39415	Spacer
2	39330	Blade, Subsoiler	13	39329	Spacer, Middle Buster
3	39372	Screw, Flat Head, M12 X 1.75 X 45mm.	14	39317	Spade, Middle Buster
4	33345	Nut, Nylon Lock, M12 X 1.75, Cl8, ZP	15	34140	Label, DR Logo, 4" Silver
5	26568	Shim, 1"ID X 1.38"OD X .16"T	16	39722	Label, Warning, Falling and Crushing, 3pt
6	32378	Pin, Draw, PTO Class 1	17	39723	Label, Warning, Crushing and Pinching, 3pt
7	32379	Washer, Lock, 7/8", YZP	18	39724	Label, Caution, General, 3pt Ground Engaging
8	32380	Nut, Hex, 7/8-9, YZP	19	39725	Bolt, Carriage, M10 X 1.5 X 50mm
9	32396	Pin, Linch, 7/16" X 1.5", YZP	20	40034	Pin, Top Link, PTO Class 1
10	39374	Bolt, M20 X 2.5mm X 100mm	21	1000030584	Nut, Nylon Lock, M10 X 1.5, Cl8, ZP
11	39375	Nut, Nylon Lock, M20 X 2.5, Cl8, ZP			



**Schematic – SUBSOILER/MIDDLE BUSTER ASSEMBLY**



**Notes:**

## DR® 3PT SUBSOILER/MIDDLE BUSTER COMBO



## 2-Year Limited Warranty

### Terms and Conditions

The DR® 3PT SUBSOILER/MIDDLE BUSTER COMBO is warranted for two (2) years against defects in materials or workmanship when put to ordinary and normal consumer use; ninety (90) days for any other use.

For the purposes of all the above warranties, "ordinary and normal consumer use" refers to non-commercial residential use and does not include misuse, accidents or damage due to inadequate maintenance.

DR Power Equipment certifies that the DR® 3PT SUBSOILER/MIDDLE BUSTER COMBO is fit for ordinary purposes for which a product of this type is used. DR Power Equipment however, limits the implied warranties of merchantability and fitness in duration to a period of two (2) years in consumer use, ninety (90) days for any other use.

The 2-Year Limited Warranty on the DR® 3PT SUBSOILER/MIDDLE BUSTER COMBO starts on the date the machine ships from our factory. The 2-Year Limited Warranty is applicable only to the original owner.

The warranty holder is responsible for the performance of the required maintenance as defined by the manufacturer's owner's manuals. The warranty holder is responsible for replacement of normally wearing parts such as the Subsoiler Blade and Middle Buster Spade are not covered by this warranty.

During the warranty period, the warranty holder is responsible for the machine transportation charges, if required. During the warranty period, warranty parts will be shipped by standard method at no charge to the warranty holder. Expedited shipping of warranty parts is the responsibility of the warranty holder.

SOME STATES DO NOT ALLOW LIMITATIONS ON THE LENGTH OF IMPLIED WARRANTIES, SO THE ABOVE LIMITATIONS MAY NOT APPLY TO YOU.

DR Power Equipment shall not be liable under any circumstances for any **incidental or consequential damages or expenses** of any kind, including, but not limited to, cost of equipment rentals, loss of profit, or cost of hiring services to perform tasks normally performed by the DR® 3PT SUBSOILER/MIDDLE BUSTER COMBO.

SOME STATES DO NOT ALLOW THE EXCLUSION OR LIMITATION OF INCIDENTAL OR CONSEQUENTIAL DAMAGES, SO THE ABOVE LIMITATIONS MAY NOT APPLY TO YOU.

THIS WARRANTY GIVES YOU SPECIFIC LEGAL RIGHTS, AND YOU ALSO HAVE OTHER RIGHTS, WHICH VARY FROM STATE TO STATE.

## ***Daily Checklist for the DR 3PT SUBSOILER/MIDDLE BUSTER COMBO***

To help maintain your DR 3PT SUBSOILER/MIDDLE BUSTER COMBO for optimum performance, we recommend you follow this checklist each time you use your DR 3PT SUBSOILER/MIDDLE BUSTER COMBO.

---

### **! WARNING**

Before performing any maintenance, you must first shut off the Tractor, remove the key and set the parking brake.

---

- [ ] **HARDWARE:** Check all Nuts and Bolts to be sure that the components are tight and secure.
- [ ] **FRAME:** Check all welds to be sure that the frame is intact and sound.
- [ ] **CLEAN:** Make sure the Frame and Slade are clean and free of debris.

## ***End of Season and Storage***

---

### **! WARNING**

Before performing any maintenance, you must first shut off the tow vehicle, remove the key and set the parking brake.

---

- Use a Hose or Pressure Washer to clean the DR 3PT SUBSOILER/MIDDLE BUSTER COMBO.
- Wipe down the DR 3PT SUBSOILER/MIDDLE BUSTER COMBO to remove any moisture and dirt that may have accumulated.
- If possible, store the DR 3PT SUBSOILER/MIDDLE BUSTER COMBO in a dry, protected place. If it is necessary to store the DR 3PT SUBSOILER/MIDDLE BUSTER COMBO outside, cover it with a protective material.



---

**75 MEIGS ROAD, P.O. BOX 25, VERGENNES, VERMONT 05491**