

DR[®] 48" CULTIPACKER

SAFETY & OPERATING INSTRUCTIONS



Serial No. _____

Order No. _____

Original Language

DR Power Equipment
Toll-free phone: 1-800-DR-OWNER (376-9637)
Fax: 1-802-877-1213
Website: www.DRpower.com

! WARNING

Read and understand this manual and all instructions before operating the DR 48" CULTIPACKER.

Table of Contents

Chapter 1: General Safety Rules..... 3
Chapter 2: Setting Up the DR 48" CULTIPACKER..... 5
Chapter 3: Operating The DR 48" CULTIPACKER..... 7
Chapter 4: Maintaining The DR 48" CULTIPACKER 8
Chapter 5: Parts Lists, Schematic Diagrams and Warranty..... 9

Conventions used in this manual

WARNING

This indicates a hazardous situation which, if not avoided, *could* result in death or serious injury.

CAUTION

This indicates a hazardous situation which, if not avoided, *could* result in minor or moderate injury.

NOTICE

This information is important in the proper use of your machine. Failure to follow this instruction could result in damage to your machine or property.

Serial Number and Order Number

A Serial Number is used to identify your machine and is located on the Serial Number Label on your machine. An Order Number is used to check and maintain your order history and is located on the upper left portion of your packing slip. For your convenience and ready reference, enter the Serial Number and Order Number in the space provided on the front cover of this manual.

Additional Information and Potential Changes

DR Power Equipment reserves the right to discontinue, change, and improve its products at any time without notice or obligation to the purchaser. The descriptions and specifications contained in this manual were in effect at printing. Equipment described within this manual may be optional. Some illustrations may not be applicable to your machine.

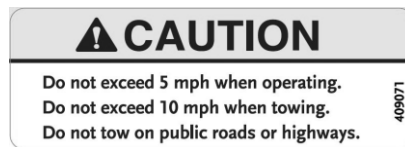
Chapter 1: General Safety Rules

WARNING

Read this safety & operating Instructions manual before you use the DR 48" CULTIPACKER. Become familiar with the operation and service recommendations to ensure the best performance from your machine. If you have any questions or need assistance, please contact us at www.DRpower.com or call toll-free 1-800-DR-OWNER (376-9637) and one of our Technical Support Representatives will be happy to help you.

Labels

Your DR 48" CULTIPACKER carries prominent labels as reminders for its proper and safe use. Shown below are copies of all the Safety and Information labels that appear on the equipment. Take a moment to study them and make a note of their location on your CULTIPACKER as you set up and before you operate the unit. Replace damaged or missing safety and information labels immediately.



#40907

Protecting Yourself and Those Around You

WARNING

Always take the following precautions when operating this cultipacker:

- Always wear protective goggles or safety glasses with side shields while operating to protect your eyes from possible thrown bits of dirt or gravel.
 - Wear shoes with non-slip treads when using your DR Cultipacker. If you have safety shoes, we recommend wearing them. Do not use the cultipacker while barefoot or wearing open sandals.
 - Wear a helmet when operating an ATV.
-

Safety for Children and Pets

WARNING

Tragic accidents can occur if the operator is not alert to the presence of children and pets. **Never** assume that children or pets will remain where you last saw them.

- Keep children out of the working area and under the watchful care of a responsible adult.
 - Be alert, stop and turn the tow vehicle off if children or pets enter the work area.
 - Never allow children to operate the DR Cultipacker.
 - Never allow children or pets to ride on the tow vehicle or the DR Cultipacker.
-

Operating the DR 48" CULTIPACKER Safely

WARNING

You must operate the Cultipacker safely. Unsafe operation can create a number of hazards for you. Always take the following precautions when using this Cultipacker:

- Read, understand, and follow all instructions in this manual. Be thoroughly familiar with the controls and the proper use of your Cultipacker before using.
 - Thoroughly inspect the area where your Cultipacker will be used, and remove all stones, sticks, wire, pet supplies, or lawn toys, and any other foreign objects that you could run over. Also, note the location of stumps, and other possible hazards that you should avoid during operation.
 - Watch for traffic when operating near roadways. Pay extra attention when operating near public roadways.
 - Be aware of your surroundings when operating the DR Cultipacker, e.g. ditches, culverts, drop-offs, and hills.
 - Never allow people who are unfamiliar with these instructions to use the DR Cultipacker.
 - To be safe, do not operate the cultipacker near small children or pets, and never allow children to operate the Cultipacker. Stop the operation when another person or pet approaches.
 - Do not allow people to ride on the Cultipacker.
 - If you have to stop to remove any debris from the Cultipacker, always shut off the tow vehicle's engine and set the parking brake.
 - Do not, under any conditions, remove, bend, cut, fit, weld, or otherwise alter standard parts on the DR Cultipacker. Modifications to your machine could cause personal injuries and will void your warranty.
 - While using the DR Cultipacker, don't hurry or take things for granted.
 - Do not operate the Cultipacker when under the influence of alcohol or medication.
 - Use the DR Cultipacker only in daylight or good artificial light.
-

CAUTION

The DR Cultipacker must be operated safely to prevent or minimize the risk of minor or moderate injury. Unsafe operation can create a number of hazards for you. Always take the following precautions when operating this Cultipacker:

- Keep in mind that the operator or user is responsible for accidents or hazards occurring to other people, their property, and themselves.
 - Do not use the DR Cultipacker to drag, tow, or carry items.
 - Never operate the DR Cultipacker with a truck (2wd or 4wd); doing so will void the DR Cultipacker warranty.
 - Never leave the DR Cultipacker unattended. If you leave the area, shut off the tow vehicle, and remove the key.
 - Keep all nuts and bolts tight and keep the equipment and attachments in good operating condition.
 - Use only manufacturer-recommended replacement parts.
 - Do not use the DR Cultipacker in a manner not in accordance with these instructions.
-

California Proposition 65

WARNING

California Proposition 65:

- This product contains or emits chemicals known to the State of California to cause cancer, birth defects, and other reproductive harm.
-

A Note to All Users

No list of warnings and cautions can be all-inclusive. If situations occur that are not covered by this manual, the operator must apply common sense and operate this DR CULTIPACKER in a safe manner. Contact us at www.DRpower.com or call 1-800-DR-OWNER (376-9637) for assistance.

Chapter 2: Setting Up the DR 48" CULTIPACKER

It may be helpful to familiarize yourself with the features of your DR 48" CULTIPACKER as shown in Figure 2 before beginning these procedures. If you have any questions at all, please feel free to contact us at www.DRpower.com.

DR CULTIPACKER Features

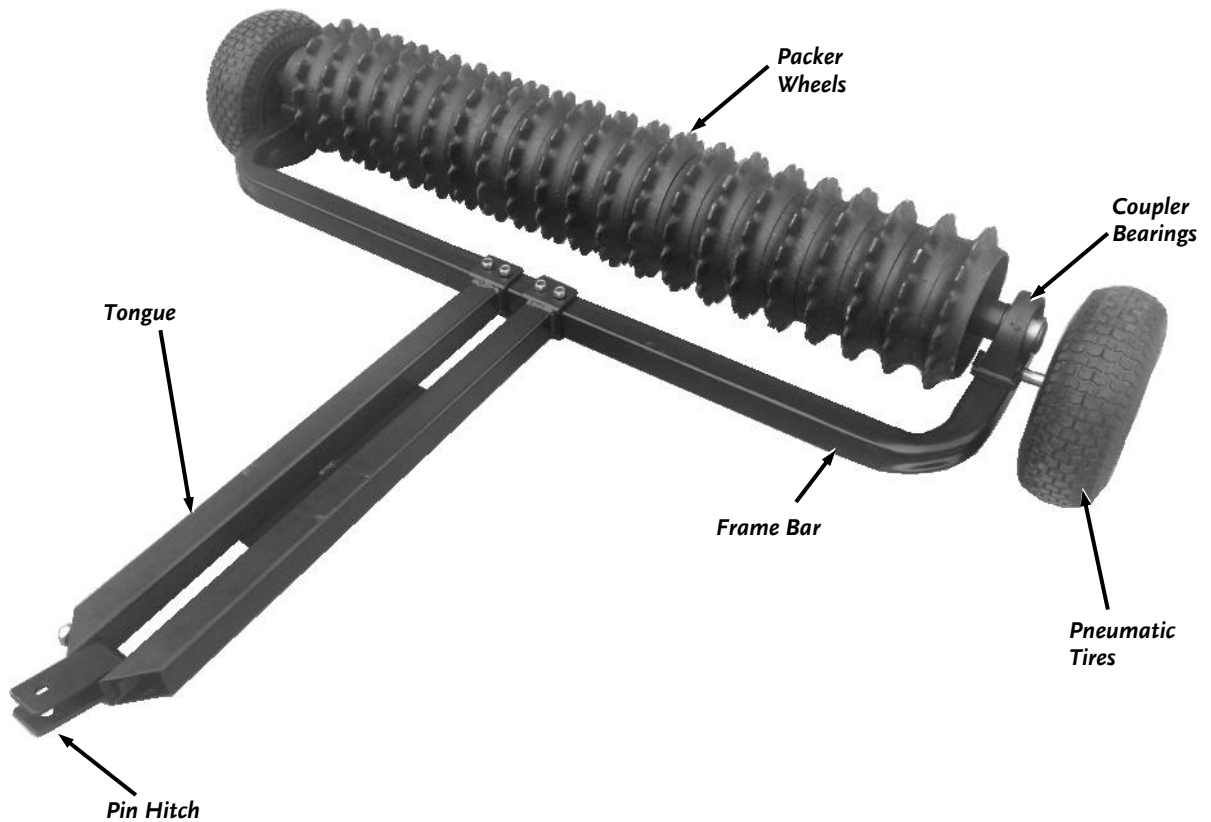


Figure 2

Specifications

Packer Wheel Size	9.5" Diameter
Packer Wheel QTY	21
Wheels	Pneumatic, 13" Diameter
Tongue Length	36.75"
Hitch Type	Pin
Dim's (assembled)	65"X48"X14"
Weight	296LBS

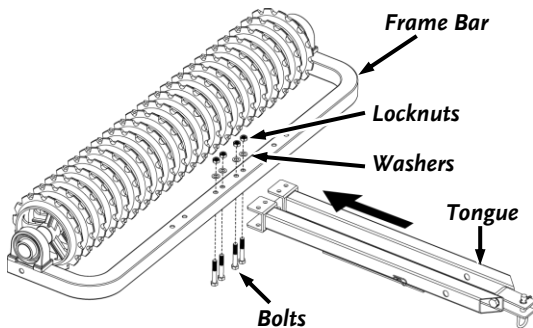


Figure 3

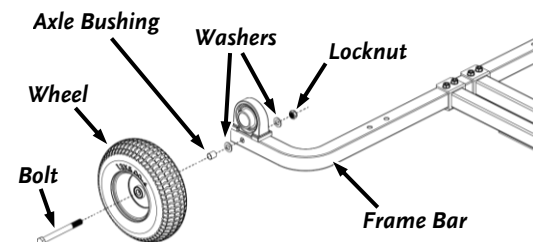


Figure 4



Figure 5



Figure 6

Assembling the DR 48" Cultipacker

Tools Needed:

- 21mm Wrench
- 22mm Wrench
- 30mm Wrench
- 36mm Wrench

1. Attach the Tongue to the Frame Bar using four M14 Bolts, Washers, and Locknuts (**Figure 3**). Tighten the Hardware using a 21mm Wrench on the Bolts and a 22mm Wrench on the Locknuts.
2. Install each Wheel to the Frame Bar with the Valve Stem facing using an M20 Bolt, an Axle Bushing, 2 Flat Washers, and an M20 Locknut (**Figure 4**). Tighten the Hardware using a 36mm Wrench on the Bolt and a 30mm Wrench on the Locknut.

Check the Tire Pressure

Tools and Supplies Needed:

- Tire Pressure Gauge
- Air Compressor

1. Remove the Valve Stem Protective Cap (**Figure 5**) and check the tire pressure with a Tire Pressure Gauge.
2. Check what the manufacturers recommended pressure is that is stamped on the side of the Tire.
3. If the pressure is too low, add air through the Valve Stem with an air hose.
4. Replace the Valve Stem Protective Cap when finished.
5. Repeat for both Wheels.

! WARNING

Do not over inflate the tires. Inflate to the manufacturers recommended pressure found on the tires.

Grease the Bearings

Tools and Supplies Needed:

- Grease Gun with all Purpose Grease

1. Use a Grease Gun with all purpose grease to pump grease into the zerk fittings located on both Coupler Bearings (**Figure 6**).

Chapter 3: Operating The DR 48" CULTIPACKER

It may be helpful to better familiarize yourself with the features of your Cultipacker by reviewing **Figure 2** in Chapter 2 before beginning the steps outlined in this chapter.

Operating Safety

! WARNING

- Never allow anyone to operate the DR Cultipacker without first reading and understanding all instructions in this manual. Be thoroughly familiar with the controls and the proper use of your Cultipacker before using.
- Never let people ride on the Cultipacker.
- **Always check for objects in the Cultipacker's path before moving.**

Operating Parameters

The DR Cultipacker can be used with a **Garden Tractor/Lawn Tractor, ATV, UTV, or Utility Tractor**. NEVER operate the DR CULTIPACKER with a Car or Truck (2WD or 4WD). Use of these vehicles can be hazardous and will void the DR CULTIPACKER Warranty.

Operating Position

The Cultipacker is in the operating position when the cast iron packer wheels are lower than the transport wheels (**Figure 7**). This allows the Cultipacker to pulverize soil clumps and create moisture retaining dimples. To position the Cultipacker in the operating position, rotate the tongue and frame bar so that the cast iron packer wheels rest on the ground.

Transport Position

The Cultipacker is in the Transport position when the cast iron packer wheels are higher than the transport wheels (**Figure 8**). This allows the Cultipacker to be transported without the packer wheels touching the ground. To position the Cultipacker in the transport position, rotate the tongue and frame bar so that the transport wheels rest on the ground and the packer wheels are lifted.

NOTICE

To avoid unnecessary wear or damage to the Packer Wheels, always use the Cultipacker in the transport position when moving the Cultipacker to and from the work area.

! WARNING

- Do not exceed 5MPH when using the DR Cultipacker in the operating Position.
- Do not exceed 10MPH when using the DR Cultipacker in the Transport Position.

Attaching the DR Cultipacker to the Tow Vehicle

1. Position the Cultipacker in either the Transport, or Operating Position by following the instructions above.
2. Stop the Tow Vehicle Engine and set the Parking Brake.
3. Lift the Tow Bar and position the Pin Hitch opening onto the Tow Vehicles Hitch Plate (**Figure 9**).
4. Align the hole in the center of the Hitch Plate with the holes in the Pin Hitch. Insert the Hitch Pin and secure it with the Hair Pin.

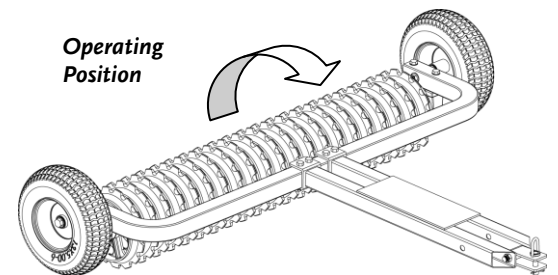


Figure 7

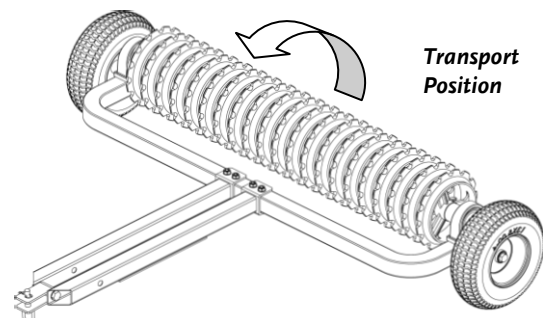


Figure 8

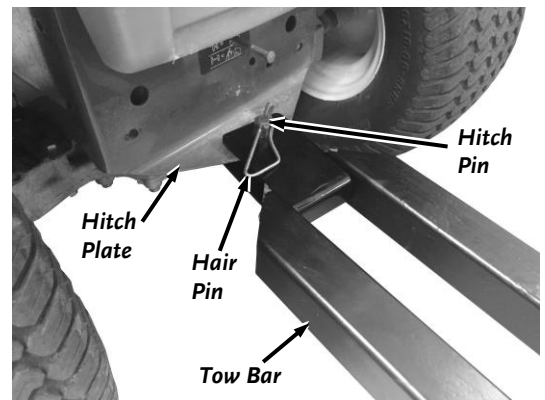


Figure 9

Chapter 4: Maintaining The DR 48" CULTIPACKER

Regular maintenance is the way to ensure the best performance and long life of your machine. Please refer to this Chapter for maintenance intervals and procedures.

WARNING

Before performing any maintenance, you must first shut off the tow vehicle, remove the key and set the parking brake.

Regular Maintenance Checklist

PROCEDURE	BEFORE EACH USE	EVERY 25 HOURS
Check general equipment condition e.g., Nuts, Bolts, welds, etc.	▲	
Hose down the DR CULTIPACKER	▲	
Check the Tire Pressure	▲	
Check condition of Packer Wheels	▲	
Grease the Packer Bearings as needed		▲

Cleaning the DR Cultipacker

1. Use a Hose or Pressure Washer to clean the DR Cultipacker to keep the Packer Wheels, Transport Wheels etc. clean and clear of debris.

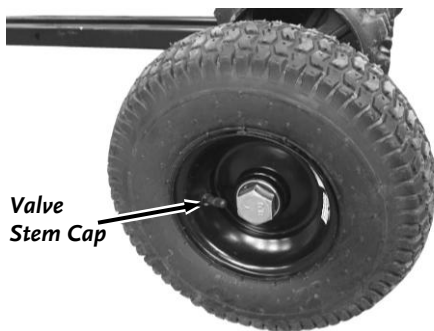


Figure 10

Checking the Tire Pressure

Tools and Supplies Needed:

- Tire Pressure Gauge
- Air Compressor

1. Remove the Valve Stem Protective Cap (**Figure 10**) and check the tire pressure with a Tire Pressure Gauge.
2. Check what the manufacturers recommended pressure is that is stamped on the side of the Tire.
3. If the pressure is too low, add air through the Valve Stem with an air hose.
4. Replace the Valve Stem Protective Cap when finished.
5. Repeat for both Wheels.

WARNING

Do not over inflate the tires. Inflate to the manufacturers recommended pressure found on the tires.



Figure 11

Grease the Bearings

Tools and Supplies Needed:

- Grease Gun with all Purpose Grease

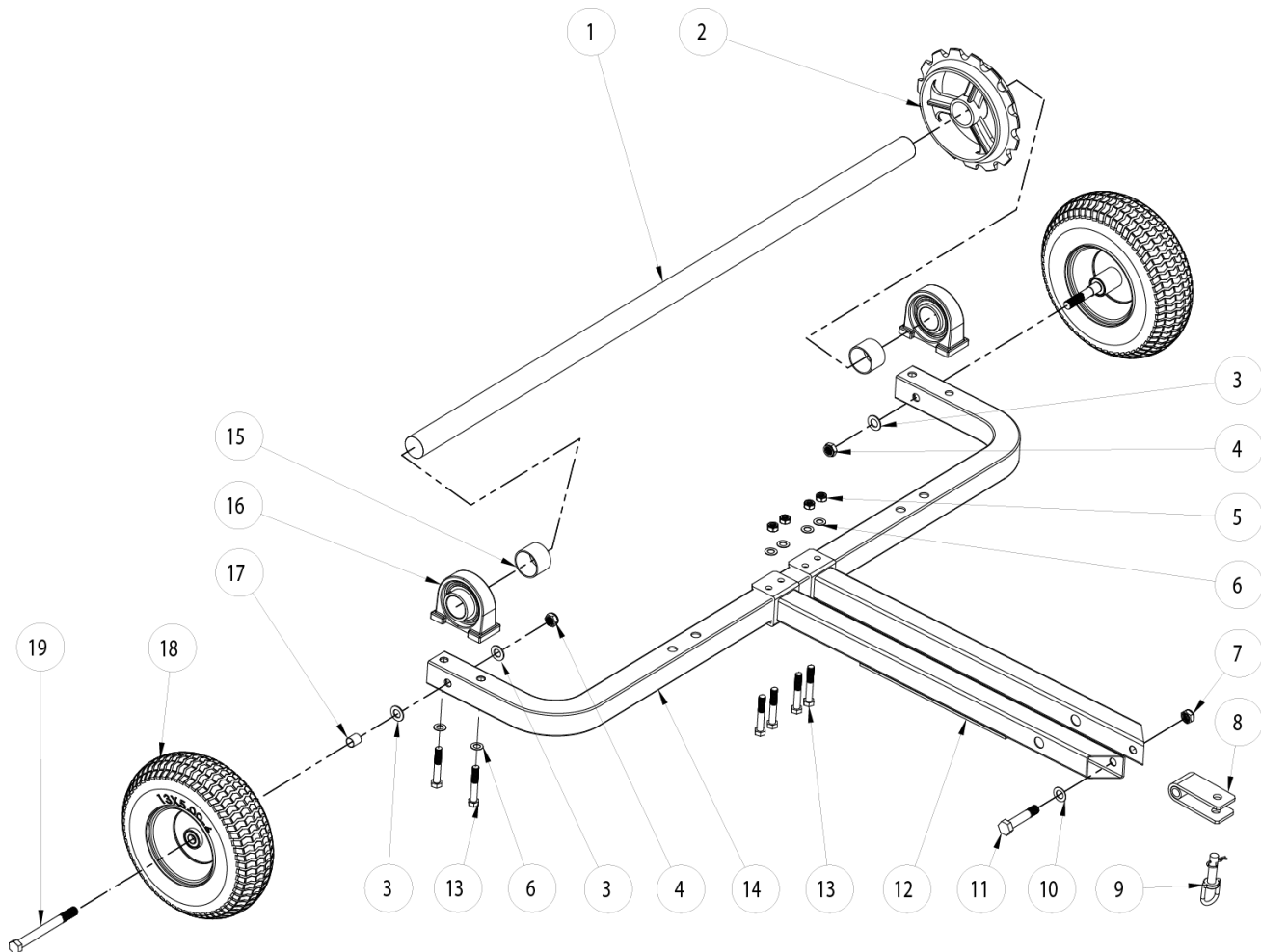
1. Use a Grease Gun with all purpose grease to pump grease into the zerk fittings located on both Coupler Bearings (**Figure 11**).

Chapter 5: Parts Lists, Schematic Diagrams and Warranty

Parts List – CULTIPACKER ASSEMBLY

Note: Part numbers listed are available through DR Power Equipment.

Ref#	Part#	Description	Ref#	Part#	Description
1	40922	Main Disc Axle	11	40932	Bolt, M24 x 9cm
2	40923	Cast Iron Packer Disc	12	40933	Tongue
3	40924	Washer, M20	13	40934	Bolt, M14 x 8cm
4	40925	Nut, M20	14	40935	Frame Bar
5	40926	Nut, M14	15	40936	Coupler Bushing
6	40927	Washer, M14	16	40937	Coupler Bearing
7	40928	Nut, M24	17	40938	Axle Bushing
8	40929	U-Bracket	18	40939	Wheel
9	40930	Hitch Pin	19	40940	Bolt, M24 x 17cm
10	40931	Washer, M24			Not Shown
			40907		Label, Warning, Max Speed
			41035		Label, Branding, DR



Notes:

DR[®] 48" CULTIPACKER



2-Year Limited Warranty

Terms and Conditions

The DR[®] CULTIPACKER is warranted for two (2) years against defects in materials or workmanship when put to ordinary and normal consumer use; ninety (90) days for any other use.

For the purposes of all the above warranties, "ordinary and normal consumer use" refers to non-commercial residential use and does not include misuse, accidents or damage due to inadequate maintenance.

DR Power Equipment certifies that the DR[®] CULTIPACKER is fit for ordinary purposes for which a product of this type is used. DR Power Equipment however, limits the implied warranties of merchantability and fitness in duration to a period of two (2) years in consumer use, ninety (90) days for any other use.

The 2-Year Limited Warranty on the DR[®] CULTIPACKER starts on the date the machine ships from our factory. The 2-Year Limited Warranty is applicable only to the original owner.

The warranty holder is responsible for the performance of the required maintenance as defined by the manufacturer's owner's manuals. The warranty holder is responsible for replacement of normally wearing parts such as the Packer Wheels, and Pneumatic Tires. Accessories to the machine are not covered by this warranty.

During the warranty period, the warranty holder is responsible for the machine transportation charges, if required. During the warranty period, warranty parts will be shipped by standard method at no charge to the warranty holder. Expedited shipping of warranty parts is the responsibility of the warranty holder.

SOME STATES DO NOT ALLOW LIMITATIONS ON THE LENGTH OF IMPLIED WARRANTIES, SO THE ABOVE LIMITATIONS MAY NOT APPLY TO YOU.

DR Power Equipment shall not be liable under any circumstances for any **incidental or consequential damages or expenses** of any kind, including, but not limited to, cost of equipment rentals, loss of profit, or cost of hiring services to perform tasks normally performed by the DR[®] CULTIPACKER.

SOME STATES DO NOT ALLOW THE EXCLUSION OR LIMITATION OF INCIDENTAL OR CONSEQUENTIAL DAMAGES, SO THE ABOVE LIMITATIONS MAY NOT APPLY TO YOU.

THIS WARRANTY GIVES YOU SPECIFIC LEGAL RIGHTS, AND YOU ALSO HAVE OTHER RIGHTS, WHICH VARY FROM STATE TO STATE.

Daily Checklist for the DR 48" CULTIPACKER

To help maintain your DR 48" CULTIPACKER for optimum performance, we recommend you follow this checklist each time you use your CULTIPACKER

⚠ WARNING

Before performing any maintenance, you must first shut off the tow vehicle, remove the key and set the parking brake.

- [] **HARDWARE:** Check all nuts and bolts to be sure that the components are secure.
- [] **FRAME:** Check all welds to be sure that the frame is intact and secure.
- [] **CLEAN:** Make sure the Packer Wheels and the Frame are clean and free of debris.

End of Season and Storage

⚠ WARNING

Before performing any maintenance, you must first shut off the tow vehicle, remove the key and set the parking brake.

- Hose down the DR CULTIPACKER to clean it of debris.
- Lubricate the Packer Bearings.
- Wipe down the DR CULTIPACKER to remove any moisture and dirt that may have accumulated.
- If possible, store the Cultipacker in a dry, protected place. If it is necessary to store the Cultipacker outside, cover it with a protective material.



75 MEIGS ROAD, P.O. BOX 25, VERGENNES, VERMONT 05491