

# DR<sup>®</sup> LEAF & LAWN VACUUM



## OPTIONAL VAC HOSE & MULCH DISCHARGE ACCESSORIES

## SAFETY & OPERATING INSTRUCTIONS

FOR MODELS WITH SERIAL NUMBER LLV34602 AND GREATER



Serial No. \_\_\_\_\_

Order No. \_\_\_\_\_

**Original Language**

DR Power Equipment

Toll-free phone: 1-800-DR-OWNER (376-9637)

Fax: 1-802-877-1213

Website: [www.DRpower.com](http://www.DRpower.com)

### **WARNING**

Read and understand this manual and all instructions before operating the DR LEAF and LAWN VACUUM Optional VAC Hose and Mulch Discharge Accessories.

## Table of Contents

Chapter 1: General Safety Rules.....	3
Chapter 2: Installing and Using the Optional Hand Vac Hose Accessory (Kit No. 35154).....	5
Chapter 3: Installing and Using the Optional Mulch Discharge Accessory (Kit No. 28254).....	7
Chapter 4: Parts Lists and Schematic Diagrams.....	8

### *Conventions used in this manual*

---

#### **WARNING**

This indicates a hazardous situation, which, if not avoided, could result in death or serious injury.

---

---

#### **CAUTION**

This indicates a hazardous situation, which, if not avoided, could result in minor or moderate injury.

---

---

#### **NOTICE**

This information is important in the proper use of your machine. Failure to follow this instruction could result in damage to your machine or property.

---

### *Serial Number and Order Number*

A Serial Number is used to identify your machine and is located on the Serial Number Label on your machine. An Order Number is used to check and maintain your order history and is located on the upper left portion of your packing slip. For your convenience and ready reference, enter the Serial Number and Order Number in the space provided on the front cover of this manual.

### *Additional Information and Potential Changes*

DR Power Equipment reserves the right to discontinue, change, and improve its products at any time without notice or obligation to the purchaser. The descriptions and specifications contained in this manual were in effect at printing. Equipment described within this manual may be optional. Some illustrations may not be applicable to your machine.

## Chapter 1: General Safety Rules

---

### **WARNING**

Read this safety & operating Instructions manual as well as the safety & operating Instructions manual that came with your DR® LEAF and LAWN VACUUM before you use these Optional VAC Hose and/or Mulch Discharge Accessories. Become familiar with the operation and service recommendations to ensure the best performance from your machine. If you have any questions or need assistance, please contact us at [www.DRpower.com](http://www.DRpower.com) or call toll-free 1-800-DR-OWNER (376-9637) and one of our Technical Support Representatives will be happy to help you.

---

### *Protecting Yourself and Those Around You*

### **WARNING**

This is a high-powered machine, with moving parts operating with high energy at high speeds. You must use proper clothing and safety gear when operating this machine to prevent or minimize the risk of severe injury. This machine can cut, and sever parts of your body if they become in contact with the moving impeller blades. Always take the following precautions when operating this machine:

- Always wear protective goggles or safety glasses with side shields while operating or performing an adjustment on your DR Leaf and Lawn Vacuum and the VAC Hose and/or Mulch Discharge Accessories to protect your eyes from possible foreign objects thrown from the machine.
  - Avoid wearing loose clothing or jewelry, which can catch on the machine's moving parts.
  - We recommend wearing gloves while using the DR Leaf and Lawn Vacuum and these optional accessories. Be sure your gloves fit properly and do not have loose cuffs or drawstrings.
  - Wear shoes with non-slip treads when using your DR Leaf and Lawn Vacuum. If you have safety shoes, we recommend wearing them. Do not use the machine while barefoot or wearing open sandals.
  - Wear long pants while operating the DR Leaf and Lawn Vacuum.
  - Use ear protectors or earplugs rated for at least 20 dba to protect your hearing.
- 

### *Safety for Children and Pets*

### **WARNING**

Tragic accidents can occur if the operator is not alert to the presence of children and pets. Children and pets are often attracted to the machine and the vacuuming activity. *Never* assume that children or pets will remain where you last saw them. Always follow these precautions:

- Keep children and pets at least 100 feet from the working area and ensure they are under the watchful care of a responsible adult.
  - Be alert and always turn off the lawn tractor engine and the DR Leaf and Lawn Vacuum engine if children or pets enter the work area.
  - Never allow children to operate the DR Leaf and Lawn Vacuum or the VAC Hose and Mulch Discharge Accessory.
  - Never allow children or pets to play in the collector. If they become trapped in the enclosure they may be exposed to temperatures similar to leaving a child or pet in a car with the windows closed on a sunny day.
- 

### *General Safety*

### **WARNING**

This is a high-powered machine, with moving parts operating with high energy at high speeds. You must operate the machine safely. Unsafe operation can create a number of hazards for you, as well as anyone else in the nearby area. Always take the following precautions when using this machine:

- Never allow people who are unfamiliar with these instructions to use the DR Leaf and Lawn Vacuum or its Optional Accessories.
-

## General Safety (continued)

---

### **WARNING**

- Never run the Vacuum Engine unless the Chute and Hose are securely in place and the Engine Frame is secured to the Cart Frame. Either the fabric collector sleeve or the Mulch Discharge Accessory must also be securely in place.
  - Do not operate in sandy areas where you will vacuum large quantities of sand. Sand will erode the vacuum housing. Check for holes after each use and replace the housing and liner when holes develop.
  - Always shut off the lawn tractor engine and the DR Leaf and Lawn Vacuum engine and disconnect the spark plug wire before attempting to clear any obstructions from the hose.
  - Use the DR Leaf and Lawn Vacuum only in daylight.
  - Never straddle or reach over the engine area at any time.
  - Use only your hands to operate the DR Leaf and Lawn Vacuum engine controls.
  - Do not, under any conditions, remove, bend, cut, fit, weld, or otherwise alter standard parts on the DR Leaf and Lawn Vacuum. Modifications to your machine could cause personal injuries and will void your warranty.
  - Do not alter or tamper with safety devices or shields. Make sure they are in their proper position.
  - While using the DR Leaf and Lawn Vacuum and VAC Hose and Mulch Discharge Accessory, do not hurry or take things for granted.
  - Never leave the DR Leaf and Lawn Vacuum unattended with its engine running.
  - Do not operate the machine when under the influence of alcohol, drugs, or medication.
- 

### **CAUTION**

The DR Leaf and Lawn Vacuum must be operated safely to prevent or minimize the risk of minor or moderate injury. Unsafe operation can create a number of hazards for you. Always take the following precautions when operating this machine:

- Keep in mind that the operator or user is responsible for accidents or hazards occurring to other people, their property, and themselves.
  - Never use the DR Leaf and Lawn Vacuum VAC Hose to vacuum anything but yard waste, such as leaves, grass, small twigs and pine cones.
  - If the machine starts to make an unusual noise or vibration, immediately shut off the engine, disconnect the spark plug wire, and allow all moving parts to come to a complete stop and cool. Inspect for clogging or damage. Clean and repair and/or replace damaged parts.
  - See manufacturer's instructions for proper operation and installation of accessories. Only use accessories approved by DR Power Equipment.
  - Always keep the equipment in a good safe operating condition. Always make certain nuts and bolts are tight and always use the supplied self-locking hardware; do not substitute.
- 

### **A Note to All Users**

No list of warnings and cautions can be all-inclusive. If situations occur that are not covered by this manual, the operator must apply common sense and operate this DR<sup>®</sup> LEAF and LAWN VACUUM Optional Accessory in a safe manner. Contact us at [www.DRpower.com](http://www.DRpower.com) or call 1-800-DR-OWNER (376-9637) for assistance.

## Chapter 2: Installing and Using the Optional Hand Vac Hose Assembly (Kit No. 35154)

In addition to using the DR LEAF and LAWN VACUUM with your lawn tractor, this system also allows you to vacuum flower beds, around trees and other places that you cannot mow with your lawn tractor.

### Assembling the Vac Hose Assembly

#### **! WARNING**

Before performing this procedure, shut off the leaf and lawn vacuum engine, wait five minutes for all parts to stop and cool, and disconnect the spark plug wire of the leaf and lawn vacuum.

**Note:** The Hand Vacuum Hose is shipped partially assembled. The following instructions detail the steps required to assemble the Handle Bar to the Nozzle and the Support Tie for the Hose (**Figure 1**).

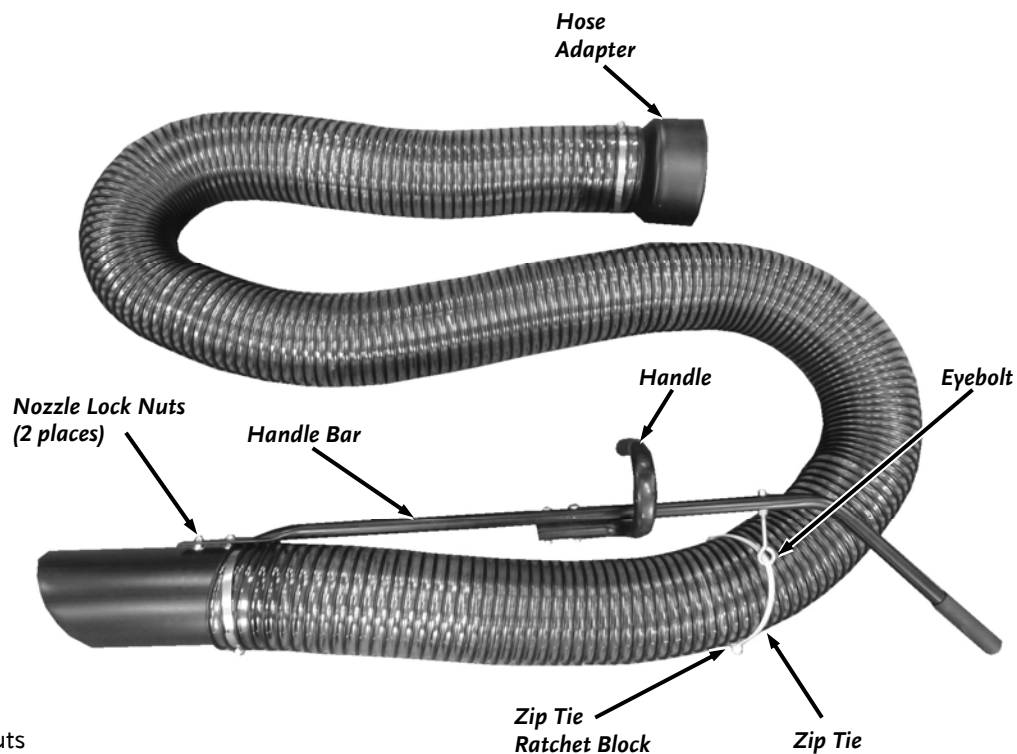


Figure 1

#### Parts Supplied:

- Two 5/16" Lock Nuts
- Zip Tie
- Handle Bar Assembly
- Hose with Nozzle

#### Tools Needed:

- Scissors or Diagonal Cutter
- 1/2" Wrench

1. Locate the two Bolts protruding from the Nozzle, align the two holes at the end of the Handle Bar, and add a Lock Nut on each Bolt (**Figure 1**). Tighten the Lock Nuts using a 1/2" wrench.
2. Thread the Zip Tie through the Eyebolt and wrap it around the Hose. Pass the end through the Zip Tie Ratchet Block on the end of the Zip Tie.
3. Pull the excess Zip Tie through the Zip Tie Ratchet Block. Leave the Tie loop slightly larger than the diameter of the Hose. Do not over-tighten.
4. Cut off excess Zip Tie length.

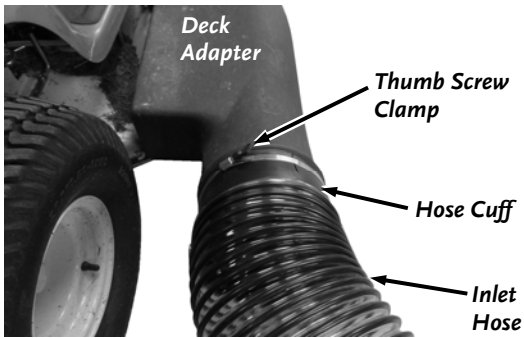


Figure 2

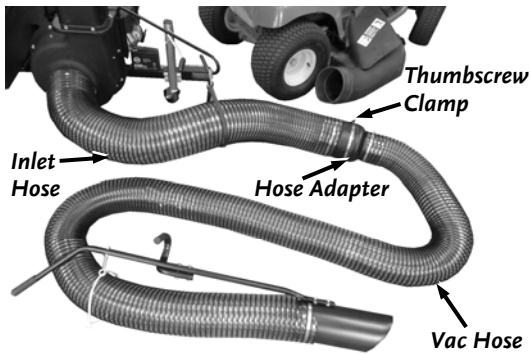


Figure 3



Figure 4

## Installing the Vac Hose Accessory to your DR Leaf and Lawn Vacuum:

1. Disconnect the DR Leaf and Lawn Vacuum Inlet Hose from your lawn mower Deck Adapter by loosening the Thumbscrew Clamp (**Figure 2**).
2. Connect the Vac Hose with the Leaf and Lawn Vacuum Hose by sliding the Vac Hose Adapter into the Inlet Hose Cuff (**Figure 3**). Tighten the Thumbscrew Clamp to secure the hoses.

## Operating the Vac Hose Accessory

### **! WARNING**

- Avoid vacuuming stones, glass and hard objects.
- Make sure that either the collector sleeve or the optional mulch discharge hose are securely attached to the DR Lawn and Leaf Vacuum outlet chute.

1. Start the engine and adjust the throttle to Fast (Rabbit).
2. While holding the Vac Hose Nozzle just above the ground, sweep the area side to side that you wish to vacuum (**Figure 4**).

**Tip:** When vacuuming leaves off mulched areas, hold the nozzle just above the leaves and lower it slowly to determine the height that will pickup the leaves and not the mulch.

**Tip:** When vacuuming leaves in an area with loose brush, twigs and branches; step on them to hold them down so as not to ingest them into the vacuum nozzle. They may clog or puncture a hole in the vacuum hose.

**Tip:** Avoid dragging the Vacuum Hose over curbs, stonewalls, or piles of cut branches. The hose is tough, but can puncture on sharp objects.

### **! WARNING**

Do not vacuum in sandy areas where large quantities of sand will be vacuumed while mowing or vacuuming. Sand will erode the vacuum housing.

## Chapter 3: Installing and Using the Optional Mulch Discharge Accessory (Kit No. 28254)

In addition to vacuuming with the DR LEAF and LAWN VACUUM, the system allows you to discharge material for mulch in a specific area. This accessory is used in conjunction with the hand vacuum accessory.

### Installing the Mulch Discharge Accessory

#### **⚠ WARNING**

Before performing this procedure, shut off the leaf and lawn vacuum engine, wait five minutes for all parts to stop and cool, and disconnect the spark plug wire of the leaf and lawn vacuum.

**Note:** Make sure to empty the DR Leaf and Lawn Vacuum Collector before installing the Mulch Discharge Accessory.

1. Release the Dump Lever on the Leaf and Lawn Vacuum so the Collector tips down.
2. Connect the cuffed end of the Mulch Discharge Hose to the Outlet Chute and tighten the Thumbscrew Clamp (**Figure 6**).
3. Route the Mulch Discharge Hose to the area you want the debris to discharge (**Figure 7**).
4. Disconnect the Inlet Hose from your lawn tractor Deck Adapter (**Figure 2** on page 6) and connect the Vac Hose to the Inlet Hose (**Figure 3** on page 6).

**Tip:** Avoid dragging the Mulch Discharge and Vacuum Hoses over curbs, stonewalls, or piles of cut branches. The hoses are tough, but can puncture on sharp objects.

### Using the Mulch Discharge Accessory

1. Vacuum Leaves and Sticks using the Vac Hose Accessory as described in Chapter 2.

#### **⚠ WARNING**

Do not stand or allow people or pets near the discharge opening. Material exits from the hose at a high rate and could cause injury (**Figure 8**).

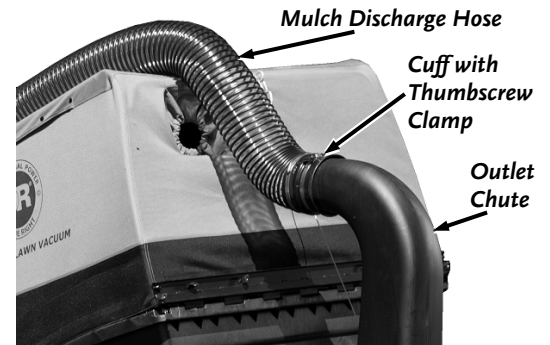


Figure 6



Figure 7

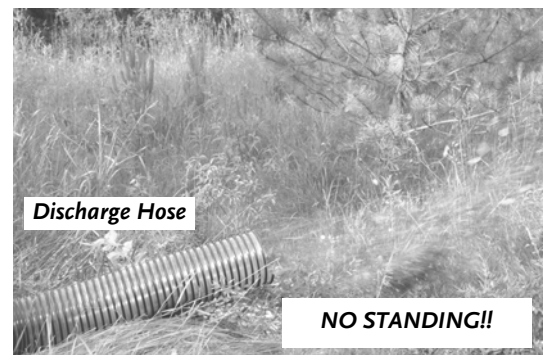


Figure 8

## Chapter 4: Parts Lists and Schematic Diagrams

---

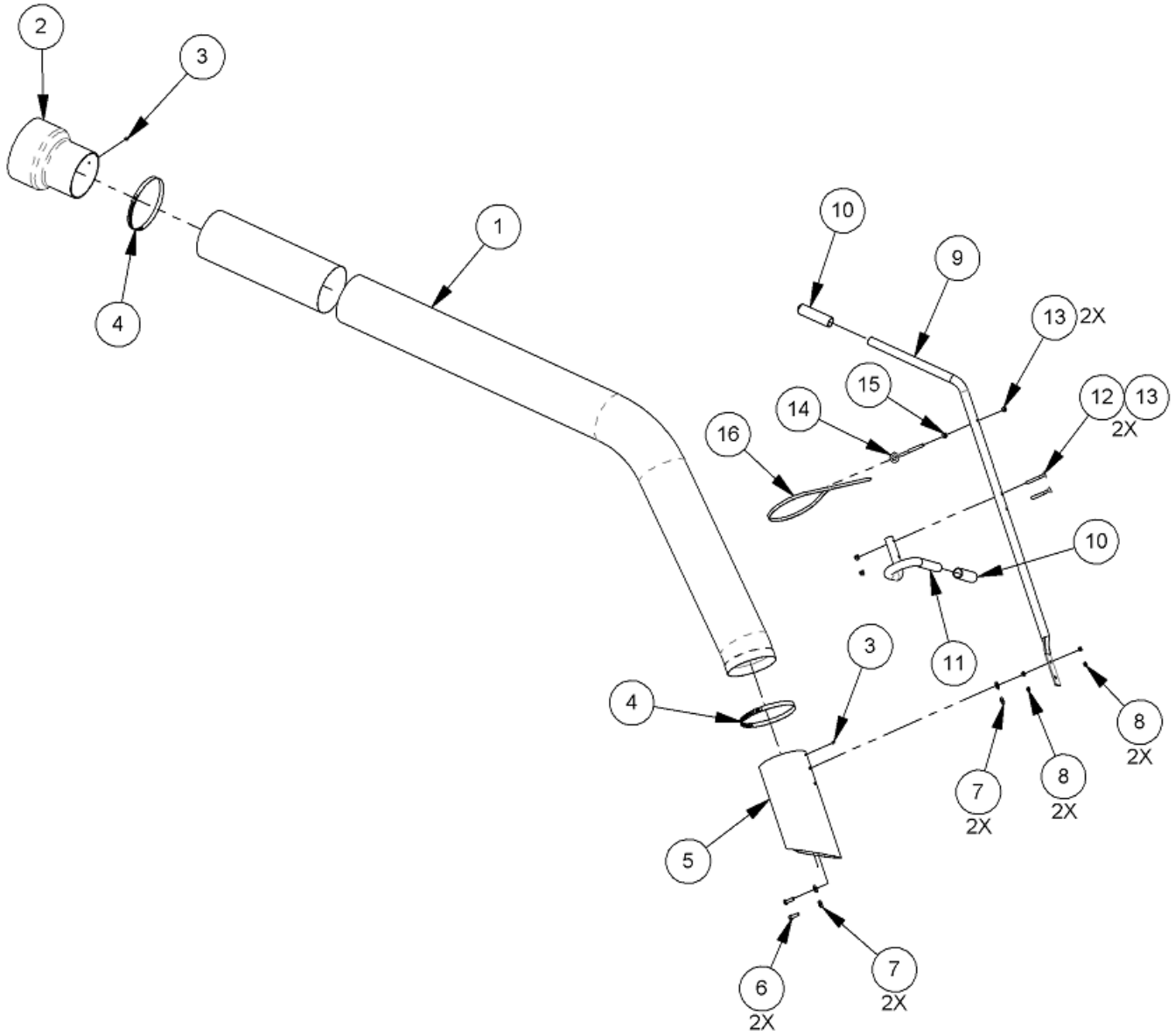
### **Parts List - Vac Hose Assembly (Kit No. 35154)**

**NOTE:** Part numbers listed are available through DR Power Equipment.

<u>Ref#</u>	<u>Part#</u>	<u>Description</u>
1	213151	Hose, 6.0" X 14', .035 Thk
2	351931	Adapter, 6" Hose To 8" Cuff
3	164141	Rivet, Pop, 3/16 X 3/16
4	186961	Clamp, Hose, 6"
5	351941	Nozzle, Vac Hose
6	111581	Bolt, HCS, 5/16-18 X 1, GR 5, ZP
7	112411	Washer, Flat, 5/16 USS
8	187551	Nut, Nylon Lock, 5/16-18, ZP, LP
9	351951	Handle, Nozzle Support
10	150471	Grip, 1" OD X 4.25, Tube
11	351961	Handle, Vac Hose
12	350261	Bolt, C-Head, 5/16-18 X 2.5, ZP
13	110761	Nut, Nylon Lock, 5/16-18, ZP
14	109161	Bolt, Eye, 5/16-18
15	110691	Nut, Finish, 5/16-18, ZP
16	157031	Cable Tie, .34 X 36", White



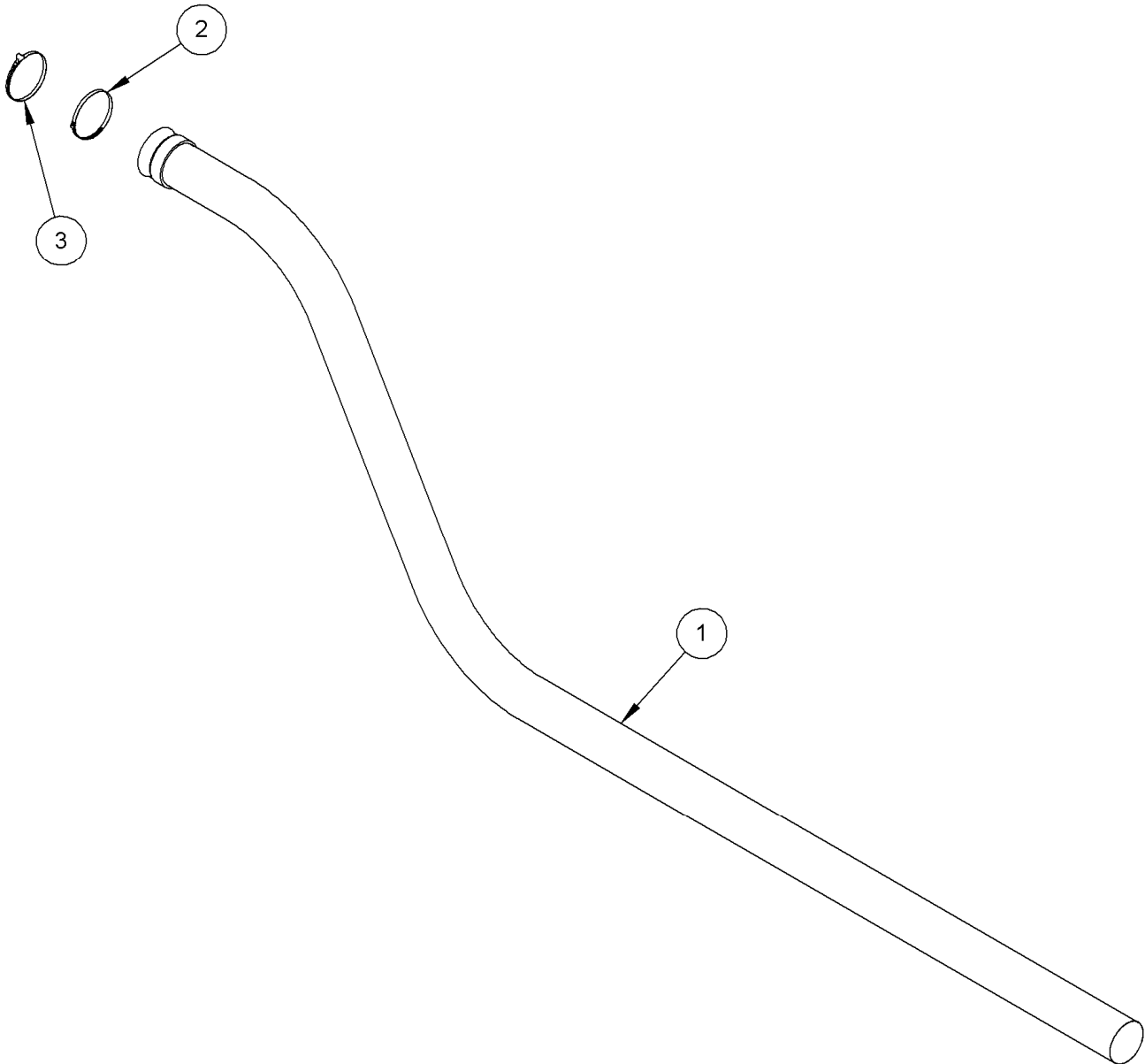
**Schematic - Vac Hose Assembly (Kit No. 35154)**



## Parts List and Schematic - Mulch-Discharge Hose (Kit No. 28254)

**NOTE:** Part numbers listed are available through DR Power Equipment.

<u>Ref#</u>	<u>Part#</u>	<u>Description</u>
01	25894	Hose, 6.0" X 17', .035 Thk
02	18696	Clamp, Hose, 6"
03	258901	Clamp, Hose, 6" Dia, Thumbscrew



**Notes:**

## Daily Checklist for the DR LEAF and LAWN VACUUM Vac Hose & Mulch Discharge Accessories

---

### **WARNING**

Before performing any maintenance, repairs or inspection, you must first shut off the mower and leaf and lawn vacuum engines, wait five minutes for all parts to stop and cool, and disconnect the spark plug wire of the leaf and lawn vacuum.

---

To help maintain your DR LEAF and LAWN VACUUM Vac Hose & Mulch Discharge Accessories for optimum performance, we recommend you follow this checklist each time you use your Vacuum.

[ ] **HARDWARE:** Check all nuts and bolts to be sure that the components are secure.

[ ] **HOSES:** Inspect the Hose for holes, frayed, worn, kinked, or abraded areas. Replace a damaged or worn Hose.



---

75 MEIGS ROAD, P.O. BOX 25, VERGENNES, VERMONT 05491