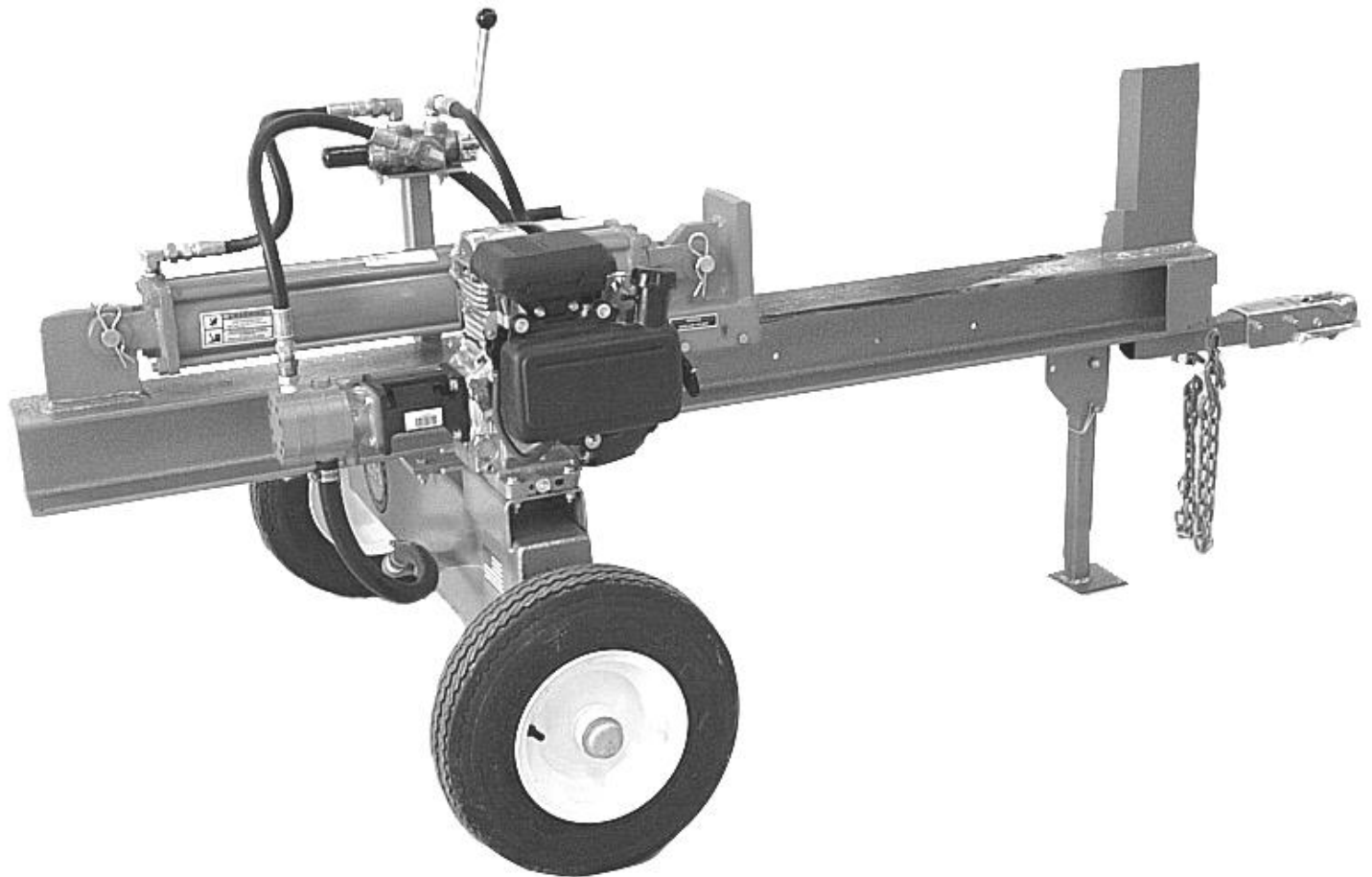


DR[®] 20-TON WOOD SPLITTER

Parts List & Assembly Diagrams



COUNTRY HOME PRODUCTS, INC.

www.dr-owner.com

Parts List — Main Frame Assembly

Ref#	Part#	Description
-------------	--------------	--------------------

01	198720	Pin
02	198730	Cylinder, 4" x 24"
03	198740	Push Block
04	198750	Wear Plate
05	198760	Hitch
06	198780	Frame
07	198790	Grease Fitting
08	198800	Leg

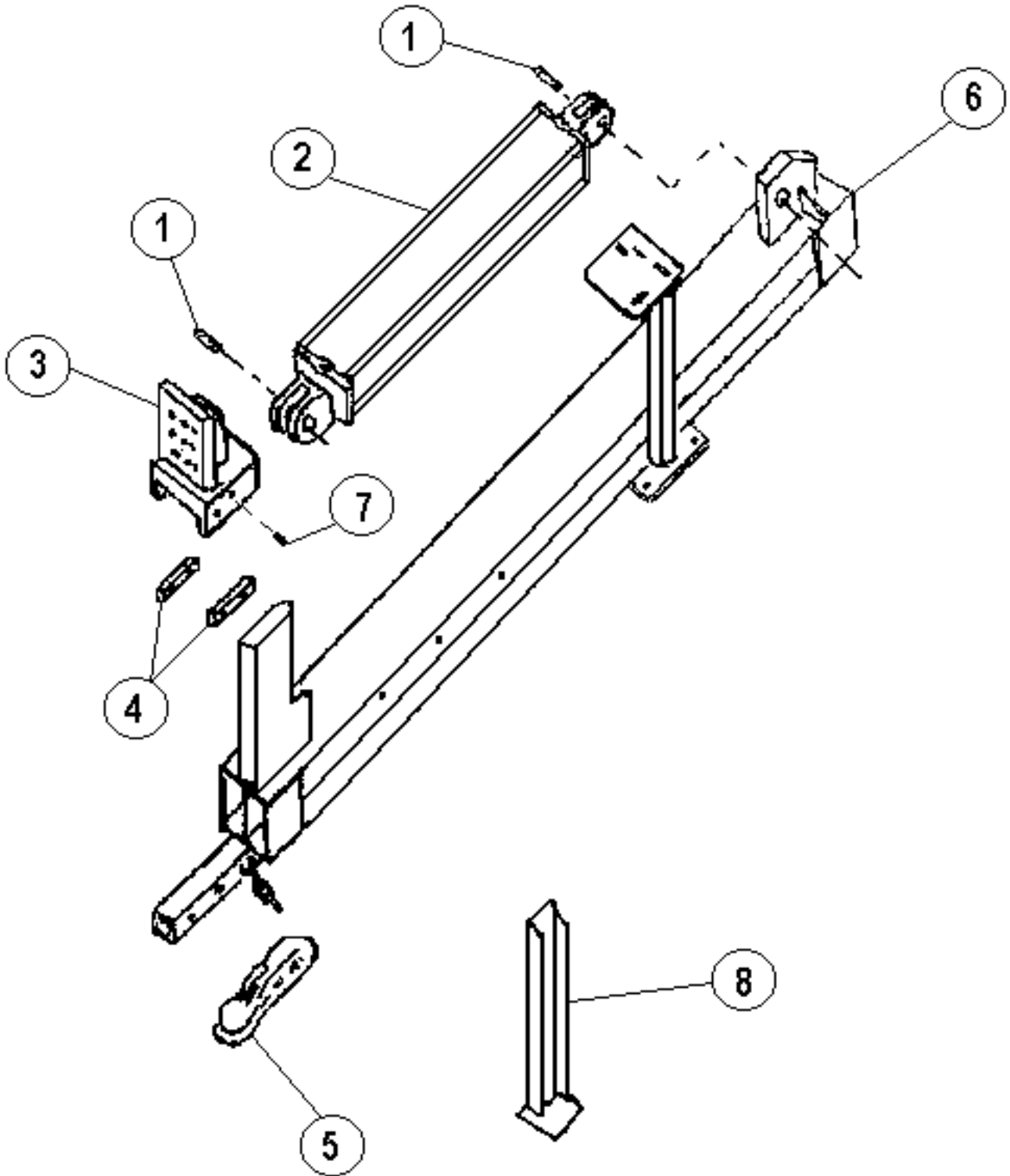
Items Not Illustrated

186501 S&O Manual, 20-Ton Wood Splitter

Safety Labels

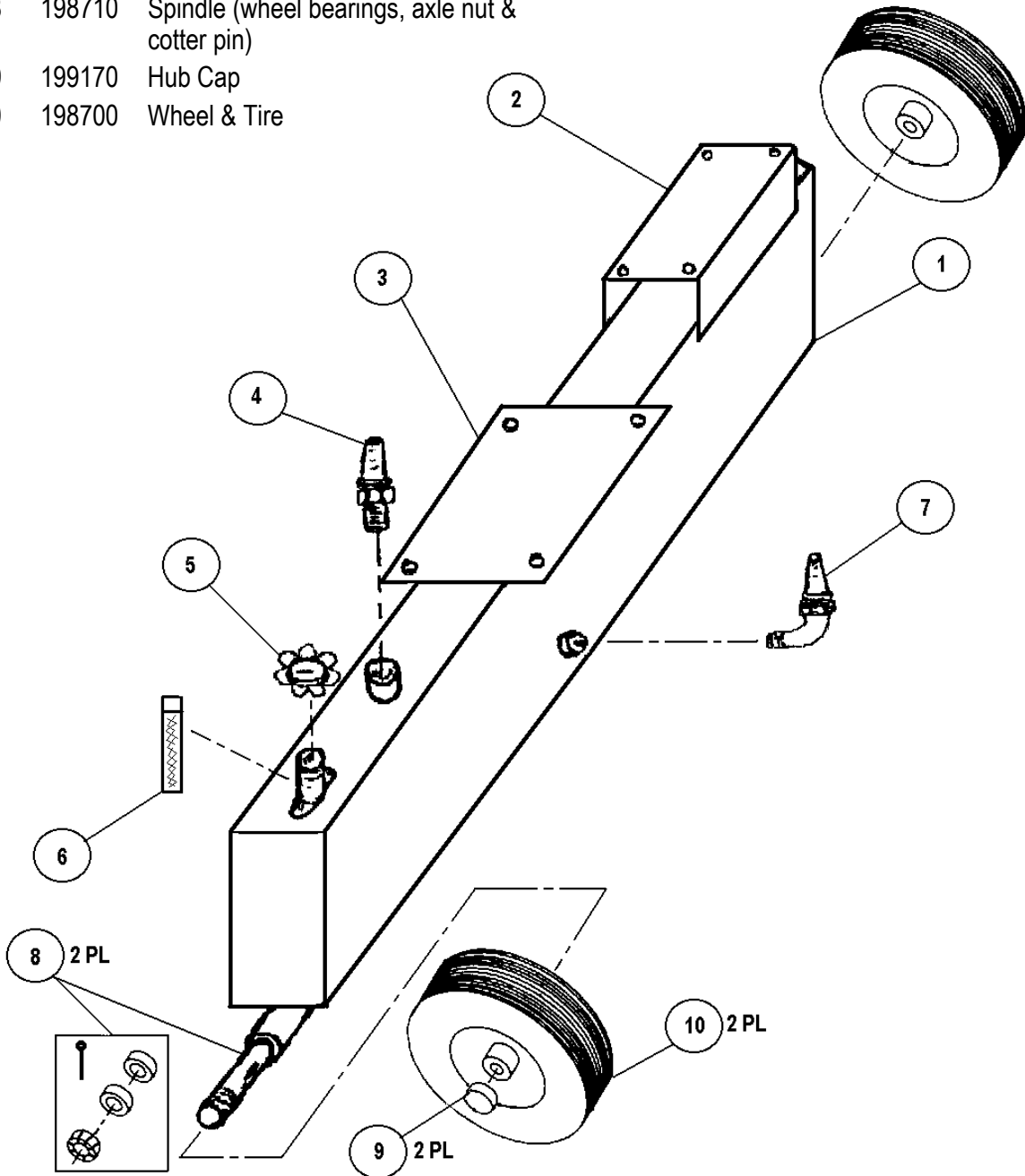
199190 Label, Caution
199200 Label, Grease Point
199210 Label, One Person
124371 Label, American Flag
199230 Label, Hydraulic Oil Only
199240 Label, Keep Hands & Feet Away
136831 Label, Caution Hot Surface
199250 Label, Safety Icons

Schematic Drawing — Main Frame Assembly



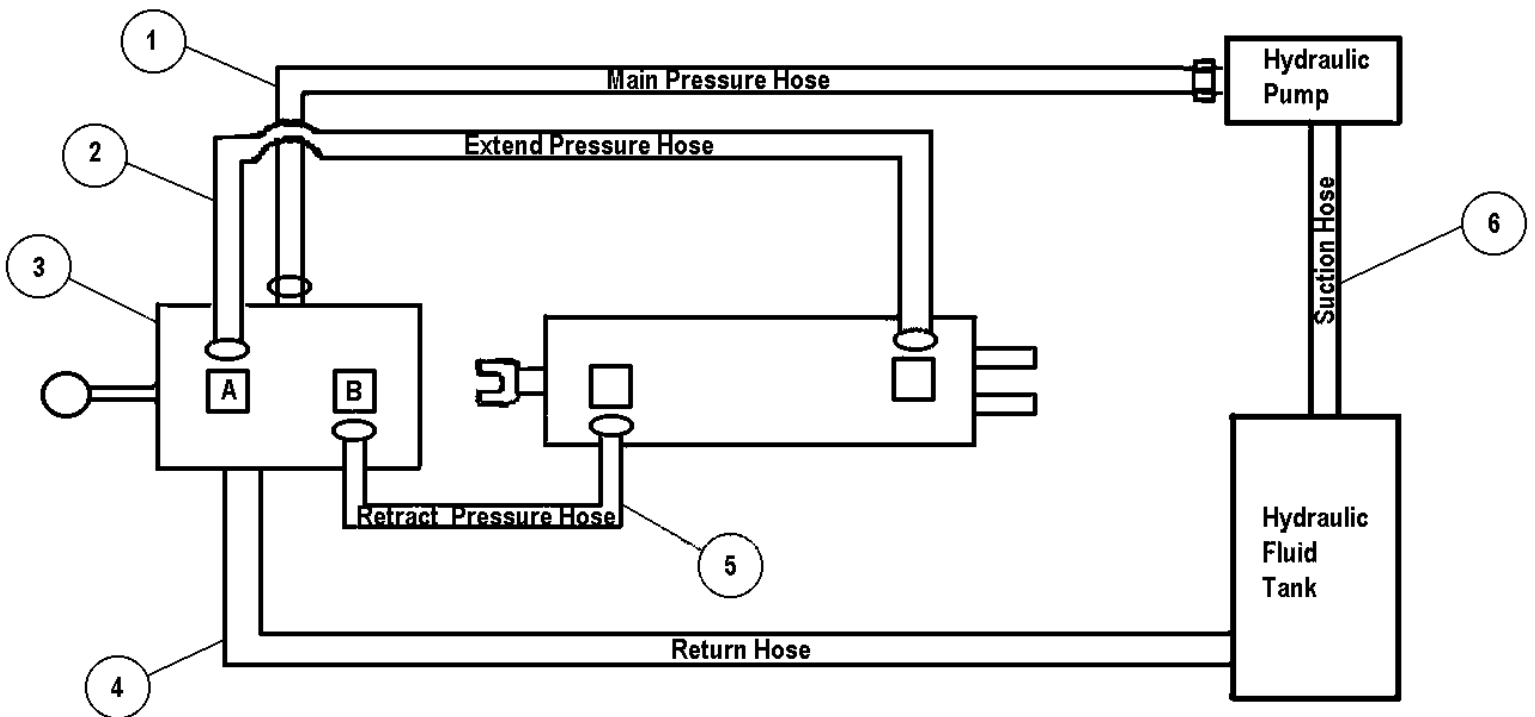
Parts List & Schematic — Hydraulic Tank Assembly

Ref#	Part#	Description
01	198930	Hydraulic Fluid Tank
02	198940	Motor Mounting Plate
03	198950	H - Beam Mounting Plate
04	198960	Hydraulic Fluid Return Fitting
05	198970	Hydraulic Fluid Filler Cap
06	198980	In-Tank Filter Element
07	198990	Hydraulic Fluid Supply (Drain) Fitting
08	198710	Spindle (wheel bearings, axle nut & cotter pin)
09	199170	Hub Cap
10	198700	Wheel & Tire



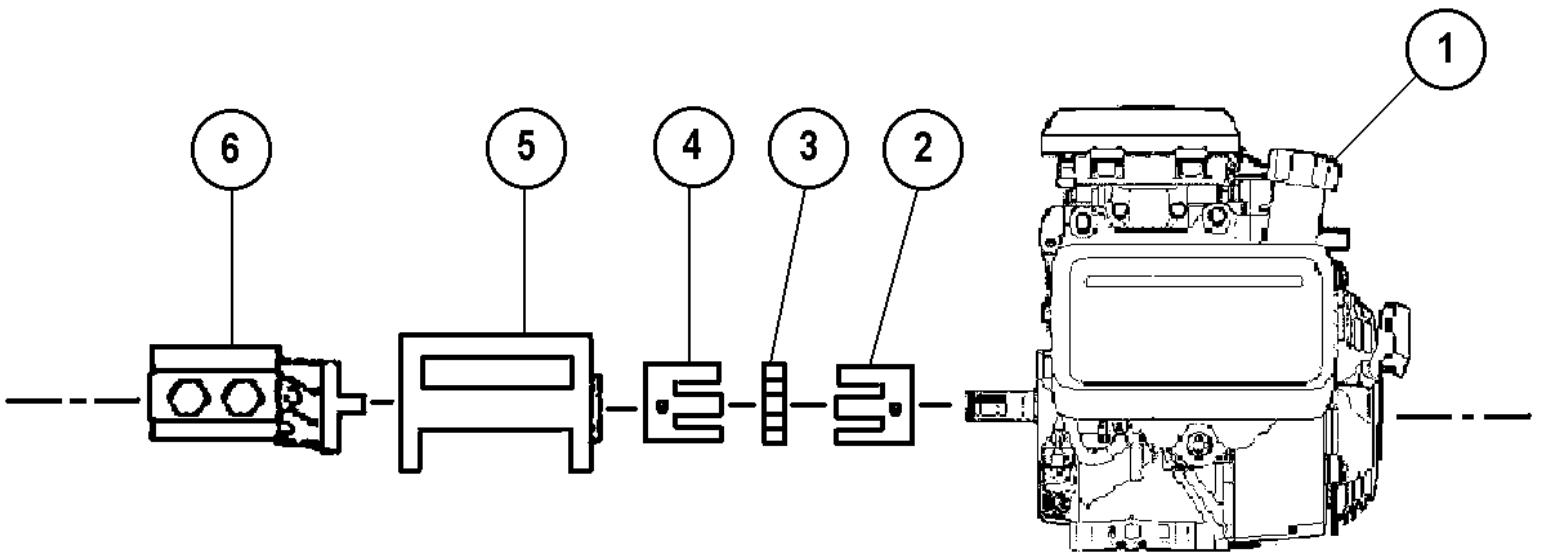
Parts List & Schematic — Hydraulic Hose Assembly

Ref#	Part#	Description
01	198810	Hydraulic Hose, 1/2" x 27"
02	198820	Hydraulic Hose, 1/2" x 18"
03	199000	Hydraulic Valve
04	198830	Hydraulic Hose, 3/4" x 12"
05	198840	Hydraulic Hose, 1/2" x 28"
06	198850	Hydraulic Hose, 3/4" x 20"



Parts List & Schematic — Engine Coupling Assembly

<u>Ref#</u>	<u>Part#</u>	<u>Description</u>
01	198870	Engine, Honda 5 HP OHC
02	198880	Coupling, Half
03	198890	Coupling, Flex
04	198900	Coupling, Half
05	198910	Bracket, Pump
06	198920	Pump, Hydraulic



Notes

Daily Checklist for the DR 20-Ton WOOD SPLITTER

To help maintain your DR 20-Ton WOOD SPLITTER for optimum performance, we recommend you follow this checklist each time you use your machine.

- ✓ **OIL:** With the splitter on a level surface, remove the oil fill cap and check the oil level. Fill the reservoir according to the dipstick with SAE 10W-30W HD motor oil.
- ✓ **GAS:** Fill the gas tank with fresh, unleaded gasoline.
- ✓ **ENGINE:** It is very important to keep the engine clean. Remove dirt and other debris from the engine cooling fins and debris guard. A dirty engine retains heat and can cause damage to internal engine components.
- ✓ **HARDWARE:** Check all nuts and bolts to be sure that the components are secure.
- ✓ **FRAME:** Check all welds to be sure that the frame is in tact and secure.
- ✓ **WEAR PLATES:** Make sure that the Wear Plates attached to the Push Block are firmly bolted into place.
- ✓ **GREASE:** Make sure that Push Block and the top of the H-Beam are well lubricated with grease.
- ✓ **HYDRAULIC HOSES:** Inspect the hydraulic hoses for frayed, worn, kinked, or abraded areas. Replace any damaged or worn hoses immediately.



COUNTRY HOME PRODUCTS, Inc.

MEIGS ROAD, P.O. BOX 25, VERGENNES, VERMONT 05491

1-800-DR-OWNER (376-9637) • www.dr-owner.com

©2004 CHP, Inc. 186511