

DR[®] ALL-TERRAIN[™] FIELD and BRUSH MOWER

Safety & Operating Instructions



\$5.00

THANK YOU!

And congratulations on your purchase of a new DR[®] ALL-TERRAIN[™] FIELD and BRUSH MOWER!

We have done our utmost to ensure that your DR[®] FIELD and BRUSH MOWER will be one of the most trouble-free and satisfying pieces of equipment you have ever owned. Please let us know of any questions or problems you may have. We want to answer or correct them as quickly as possible. (When you do call or write, please have your serial number and/or order number handy—it will speed things up!) We also hope to hear from you on how much you like your new helper.

And, please tell your friends about your new DR[®] FIELD and BRUSH MOWER! Having DR[®] Owners spread the word about our products and our way of doing business is the best advertising we can have, and the best way to help us provide even better service in the years to come.

Thanks once again!



for all of us at...
COUNTRY HOME PRODUCTS[®]

Safety Information

We want you to enjoy years of productive use from your DR[®] FIELD and BRUSH MOWER. We don't want you to get injured, so please take a few moments to read the following guidelines for safely operating your new machine.

Dress Appropriately

- Wear safety glasses while mowing to protect your eyes from thrown objects.
- Wear shoes with non-slip treads when using your DR[®] FIELD and BRUSH MOWER. If you have safety shoes, we recommend that you wear them. Do not use the machine while barefoot or wearing open sandals.
- Wear long pants while mowing, and avoid loose clothing or jewelry, which might get caught in brush or on the mower's moving parts.
- Use ear muffs or ear plugs to protect your valuable hearing.
- We recommend wearing gloves while mowing.

Preparation

- Read these *Safety & Operating Instructions* as well as the engine manufacturer's owner's manual before you use the DR[®] FIELD and BRUSH MOWER. Become familiar with the controls, engine and service recommendations to ensure the best performance from your machine.
- Inspect the area you'll be working in for hidden objects such as large rocks, logs, rope, wire, garden tools, etc., and remove these obstacles before mowing. Mowing over such obstacles could damage the machine and cause injury.

Operating the Machine Safely

- Keep bystanders at least 100 feet away from your work area at all times. Objects can be thrown far from the mower and at great speeds. To be safe, do not operate the machine near small children or pets, and never allow children to operate the mower. Disengage the blade and stop the engine when another person approaches.
- Be sure all blade and wheel controls are DISENGAGED before attempting to start the engine. Engage and disengage the blade a few times to get used to it before mowing.
- NEVER remove the shields from the mower, or alter the deck in any way.
- Keep your hands and feet away from the blade, belts, chains, blade pulleys, and concealed areas while the engine is running. NEVER reach under the deck or grab hold of the deck deflector when the engine is running.
- ALWAYS shut off the engine and remove the spark plug wire prior to making any adjustments to the machine. If you have to stop to remove grass or debris from the underside of the deck, always disconnect the spark plug wire first.
- The exhaust area on the engine becomes very hot. Allow the engine to cool before doing maintenance or making adjustments.

- Keep combustible substances away from the engine when it is hot.
- When operating over uneven terrain and slopes, use **EXTREME CAUTION** and make sure you're on firm footing at all times.
- Mow only during the daylight hours.
- Use extra caution when mowing in wet, slippery conditions.
- **ALWAYS OPERATE THE MOWER FROM BEHIND.** Never pass or stand on the discharge (right) side or in front of machine when the engine is running.
- **DO NOT**, under any conditions, remove, cut, bend, weld or otherwise alter standard parts on your DR[®] FIELD and BRUSH MOWER. This includes all shields and guards. Unauthorized modifications can make the equipment unsafe and may void your warranty.
- While using the DR[®] FIELD and BRUSH MOWER, don't hurry or take things for granted. When in doubt about the equipment or your surroundings, stop the machine and take the time to look things over. Make sure that you have 100% control of the mower at all times.

Safety with Gasoline-Powered Machines

- Do not run the engine in an enclosed area or without proper ventilation.
- Store all fuel in containers specifically designed for this purpose. Plastic containers are more likely to prevent sediment and condensation problems.
- Fill the gasoline tank outdoors with the engine off. Don't handle gasoline if you or anyone nearby is smoking, or if you're near anything that could cause it to ignite or explode.
- If gas is spilled, do not attempt to start the engine. Move the machine away from the area of the spill and avoid creating any source of ignition until the gas vapors have dissipated. Wipe up any spilled fuel to prevent a fire hazard, and properly dispose of the waste.
- Allow the engine to cool completely before storing in any enclosure. Never store the machine near an open flame or spark with gas in the tank.
- Do not change the engine governor settings or modify the engine speed.

Warning to all Californian and Other Users

Under California law, and the laws of some other states, you are not permitted to operate an internal combustion engine using hydrocarbon fuels without an engine spark arrester. All DR[®] FIELD and BRUSH MOWERS shipped to California and Washington state are provided with spark arresters. Failure of the owner/operator to maintain this equipment in compliance with state regulations is a misdemeanor under California law and may be in violation of other state and/or federal regulations. Contact your local fire marshal or forest service for specific information in your area.

The Fine Print...

Country Home Products, Inc. reserves the right to discontinue, change and improve its products at any time without notice or obligation to the purchaser.

The descriptions and specifications contained in this manual were in effect at printing. Equipment described within this manual may be optional. Some illustrations may not be applicable to your machine.

Safety/Operation Labels

Always replace damaged or missing safety and operation labels immediately.



#109831



#136491



#127811



#136501



#136821



#136841



#153331

DR® ALL-TERRAIN MOWER

BEFORE STARTING...

- Read operating instructions.
- Check gas & oil levels.
- Put transmission in N neutral.
- Move blade lever to DISENGAGED.
- Move throttle to CHOKE (cold start) or RUN (warm start).

TO STOP ENGINE...

- Pull blade control back to DISENGAGED.
- Put transmission in N neutral.
- Move throttle to IDLE.
- Turn key to OFF and remove key.
- Or, in case of emergency, release operator presence control (while blade is engaged) and engine will stop automatically.

BLADE ENGAGED

OPERATE SAFELY...

- Keep bystanders at least 100 feet from work area.
- Disengage blade and stop engine when someone approaches.
- Always keep hands and feet clear of blade and other moving parts.
- Always shut off engine and remove spark plug wire before making adjustments to machine.

4 3 2 1 N R

TO START ENGINE...

Electric-starting

- Turn key to START and hold until engine starts.
- Release key, it will stop at RUN position.

Manual-starting

- Turn key to START.
- Pull recoil slowly until you feel tension, then pull with a rapid stroke to start engine.
- Move throttle to RUN.

TO ENGAGE WHEEL DRIVE...

- Move shift lever to desired gear.
- Note: The heavier the material being cut, the lower the gear.
- Squeeze wheel clutch lever to move forward or back.

BLADE DISENGAGED

Manufactured by
County Home Products
Worcester, VT 05491
1289231-01/01R www.dr-mower.com

#153311

Table of Contents

SAFETY INFORMATION	iv
DRESS APPROPRIATELY	iv
PREPARATION	iv
OPERATING THE MACHINE SAFELY	iv
WARNING TO ALL CALIFORNIAN AND OTHER USERS.....	v
BEFORE STARTING	2
ADD OIL AND GAS.....	2
CONNECT THE BATTERY WIRE	2
CHECK THE TIRE PRESSURE.....	2
CONTROLS & FEATURES	3
OPERATING INSTRUCTIONS	4
BEFORE STARTING THE ENGINE.....	4
STARTING THE ENGINE	4
ENGAGING THE WHEEL DRIVE	4
ENGAGING THE BLADE	4
STOPPING THE BLADE.....	5
STOPPING THE ENGINE.....	5
TIPS FOR BEST PERFORMANCE	6
SLOPES	6
IF THE MACHINE GETS HUNG UP.....	6
CUTTING BRUSH & SAPLINGS	7
REVERSE.....	7
CUTTING IN WET & HEAVY GROWTH	7
GENERAL MAINTENANCE	8
REGULAR MAINTENANCE CHECK LIST	8
BATTERY CARE	9
LUBRICATION	9
GREASE FITTINGS.....	10
BELTS	11
TO REMOVE/REPLACE THE BLADE	13
TO ADJUST THE WHEEL CLUTCH.....	13
TO REMOVE/REPLACE THE DRIVE CHAIN.....	14
TO ADJUST THE BLADE ENGAGEMENT CABLE	14
TO REMOVE THE WHEELS	15
TO ADJUST THE PARKING BRAKE.....	15
TRANSMISSION	15
TO REMOVE OR CHANGE THE DECK.....	16
END OF SEASON & STORAGE	17
TROUBLESHOOTING	18
DAILY CHECKLIST FOR THE DR® FIELD AND BRUSH MOWER	BACK COVER

Before Starting

Before you operate your DR[®], please read these operating instructions and the engine manufacturer's owner's manual. Then, just **ADD OIL and GAS**, attach the battery wire and you're ready to go!

Tools & Supplies Needed:

- (2) 5/16 wrenches or sockets
- SAE30 HD (High Detergent) oil
- fresh unleaded gas

Add Oil and Gas

1. Place the machine on a level surface and add SAE30 HD (High Detergent) oil to the reservoir. Check the dipstick frequently while filling to avoid overfilling.

Important! To get accurate oil level reading:

- on Briggs & Stratton and Tecumseh engines the dipstick should be screwed in completely.
- On the Kawasaki engine the dipstick should not be screwed in.

2. Fill the gas tank with clean, unleaded gasoline.

Note: See your engine manufacturer's owner's manual for detailed fuel and oil recommendations.

3. Open the fuel shut-off valve (on the bottom of the gas tank) if your model is equipped with one.

Connect the Battery Wire

For safety, we've disconnected one of the battery wires for shipping. Connect the negative wire to the negative terminal on the battery (*Figure 1*).

Check the Tire Pressure

There should be 14 psi in each tire.

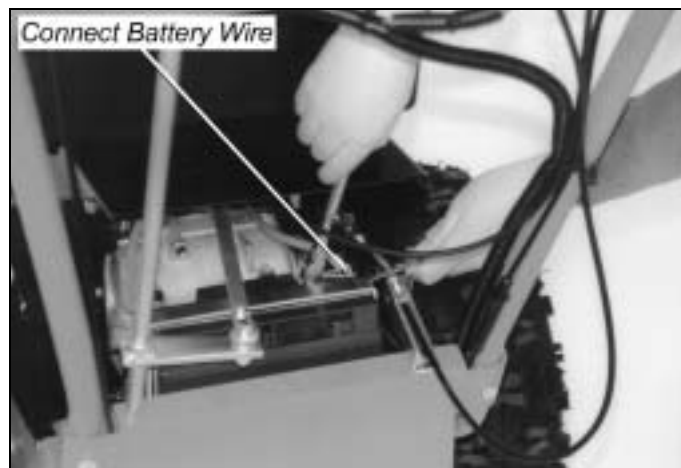


Figure 1

Controls & Features

Note: Kawasaki Model shown.



Figure 2

Operating Instructions

Before Starting the Engine

1. Check the oil level every time you use the machine.
2. Check the gas level.
3. Open the fuel shut-off valve (on the bottom of the gas tank), if your model is equipped with one.

Starting the Engine

Electric-Starting

1. Move the shift lever to N (Neutral).
Note: Shift lever **MUST** be in neutral or the engine will not start.
2. Move the throttle to the CHOKE position (to the RUN position if the engine is already warm).
3. Turn the key to START and hold it until the engine starts.
4. Release the key, it will snap to the RUN position.
5. Move the throttle to the RUN position.

Manual-Starting (8 & 10 HP Models only)

1. Move the throttle to the CHOKE position (to the RUN position if the engine is already warm).
2. Turn the key to START.
3. Pull the recoil rope slowly until you feel resistance, then pull with a rapid stroke to start the engine.
4. Move the throttle to the RUN position.

Engaging the Wheel Drive

The DR[®] FIELD and BRUSH MOWER has a four-speed forward transmission and single-speed reverse. Forward speeds range from 1.1 mph in first gear to 4.5 mph in fourth gear. Use the lower gears for mowing in thick, woody vegetation and the higher gears for wide-open areas and lighter vegetation, or as "travel gears." Reverse is ideal for maneuvering in tight spots.

Note: Always release the wheel clutch lever when shifting gears.

1. Disengage the parking brake.
2. Move the shift lever to the desired gear.
3. Gently squeeze the wheel clutch lever to engage a gear.

Engaging the Blade

1. Hold down the operator presence lever.
2. Engage the blade control lever.

Note: If you engage the blade control lever before holding down the operator presence lever the engine will shut off.

Caution! Always disengage the blade before shifting into reverse.

Stopping the Blade

Pull the blade control lever back to the DISENGAGED position.

Note: Releasing the operator presence lever while the blade is engaged will cause the engine to shut off.

Stopping the Engine

1. Disengage the blade.
2. Move the shift lever to N (Neutral).
3. Move the throttle control to IDLE.
4. Turn the key to OFF and remove it for safety.
5. Set the parking brake.

If your machine is equipped with a fuel shut-off valve, close it when transporting or storing the mower.

Tips for Best Performance

Slopes

- We do not recommend using the DR[®] ALL-TERRAIN[™] FIELD and BRUSH MOWER continuously on slopes greater than 25 degrees. Doing so could deprive the engine of oil and cause it to overheat.
- To avoid freewheeling, shift into a lower gear before going down a slope. Do not shift while on a slope.
- Note that the mowing deck pivots from side to side (15 degrees in either direction), which helps avoid scalping, and keeps the weight balanced over the drive wheels when operating on uneven terrain (*Figure 3*).



Figure 3

If the machine gets hung up...

- Disengage the blade. Do not try to free the machine from stumps or debris while the blade is engaged.
- Try putting the machine in reverse and backing away from the obstacle.
- Try pushing down on the handlebars to lift the mowing deck over the obstacle (*Figure 4*).
- **If you need to leave the operating position to clear debris from the deck, first put the machine in "N" (Neutral), turn the engine off, set the brake and disconnect the spark plug wire.**



Figure 4

Caution: DO NOT touch the exhaust areas when reaching for the spark plug—they are very hot.

Cutting Brush & Saplings

- When cutting woody material, small saplings, etc., allow the machine to ride up and over material slowly. Adjust your forward speed to varying conditions (*Figure 5*).
- After cutting brush, etc., you may want to mow over it again to remove any remaining branches. It works best to mow from the trunk end toward the top as brush lies on the ground.



Figure 5

Reverse

- Be very careful of your footing when operating the machine in reverse. Know what's behind you and take your time.
- Disengage the blade before shifting into reverse. Mow in the forward gears only, using reverse for maneuvering.
- If you find it difficult to shift into reverse, lightly "feather" the clutch lever as you put the shift lever into reverse, then quickly release the clutch lever.

Cutting in Wet & Heavy Growth

- Be very careful of your footing when mowing in wet conditions. Avoid steep slopes and other slippery areas.
- Use a lower, slower speed.

General Maintenance

***** For Engine Maintenance, Please Refer to the Engine Manufacturer's Owner's Manual. *****

Regular Maintenance Check List

Regular maintenance is the way to ensure the best performance and long life of your machine. Please refer to this manual and the engine manufacturer's owner's manual for maintenance procedures. Service intervals listed in the checklist below supercede those listed in the engine manufacturer's owner's manual.

⚠ WARNING: Some of the following procedures require access to the underside of the machine. If you need to tip the machine back or on its side (with the discharge chute facing up), you must first drain the oil and gas, and remove the air filters.

Note: Service intervals shown are considered maximum under normal operating conditions. Increase frequencies under extremely dirty or dusty conditions.

Procedure	Before Each Use	Every 25 Hours	Every 50 Hours	Every 100 Hours
Check Operator Presence Switch	▲			
Check Engine Oil Level	▲			
Check General Equipment Condition	▲			
Lubricate Grease Fittings		▲		
Check Tire Pressure		▲		
Clean Air Filter & Precleaner*		▲		
Change Engine Oil & Filter*	1 st time 5 hours	▲		
Check Parking Brake Adjustment			▲	
Clean Engine Exterior & Cooling Fins			▲	
Check All Belt Tensions & Condition			▲	
Lubricate Spindle				▲
Replace Spark Plugs				▲
Replace Air Filter & Precleaner				▲

* The engine on your DR[®] may not have a precleaner or oil filter.

Battery Care

Electric-Starting Models

Proper care can lengthen the life of a battery. Follow these recommendations to ensure your battery's best performance and long life:

- Do not allow the battery charge to get too low. If the machine is not used, the battery should be charged every 4 – 6 weeks.
- Store an unused battery in a dry area that does not freeze.
- Do not charge an already charged battery. In theory, our battery can not be overcharged with a trickle charger; however, when a battery is fully charged and the charger is still on, it generates heat that could be harmful to the battery. A fully charged battery will read 12V-13.2V with a voltmeter.
- Do not continue to crank your engine when the battery charge is low.

Charging the Battery

If the battery loses its charge, you'll need to use a trickle charger (like the DR[®] Battery Charger) to recharge it. The charger should have an output of 12 volts at no more than 6-8 amps.

- At 1 amp the battery may need to be charged for as much as 48 hours.
- At 2 amps the battery may need to be charged for as much as 24 hours.
- At 6-8 amps the battery will be charged in 2 to 3 hours.

Caution: At 6-8 amps a battery can overcharge.

Note: Using the recoil starter (8.0 HP model only) and then running the engine will not recharge a dead battery.

Lubrication

Your DR[®] FIELD & BRUSH MOWER is greased at the Factory. You do not need to lubricate it for the first 25 hours of use.

Tools & Supplies Needed:

- flexible hose grease gun
- Lithium grease
- 1/2" wrench or socket (chain cover)
- 7/16" wrench or socket (chain cover)
- FLUID FILM[®] or comparable lubricant

 **WARNING:** Always disconnect the spark plug wire before servicing your machine.

Grease Fittings

1. There are two grease fittings below the black belt guard that need maintenance (*Figure 6*):

- The belt idler arm should have 1-2 pumps of grease every 25 operating hours.
- The mower spindle should have 3-4 pumps every 100 operating hours.

Note: Over greasing will cause grease to leak out of the seals onto the mower drive belt. Unless instructed otherwise, pump only until you feel slight resistance (1-2 pumps).

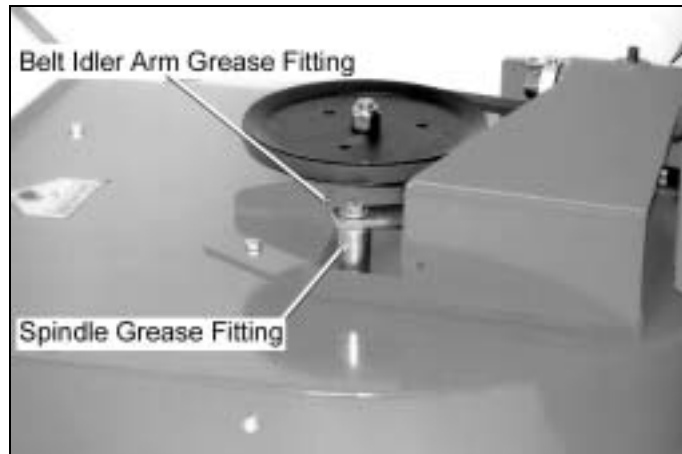


Figure 6

2. The drive chain should be lubricated with FLUID FILM[®] or comparable lubricant every 10 to 20 operating hours—more often if the machine is operated in extremely dusty or wet conditions. Remove the chain cover, lubricate the chain and replace the cover (*Figures 7 & 8*).

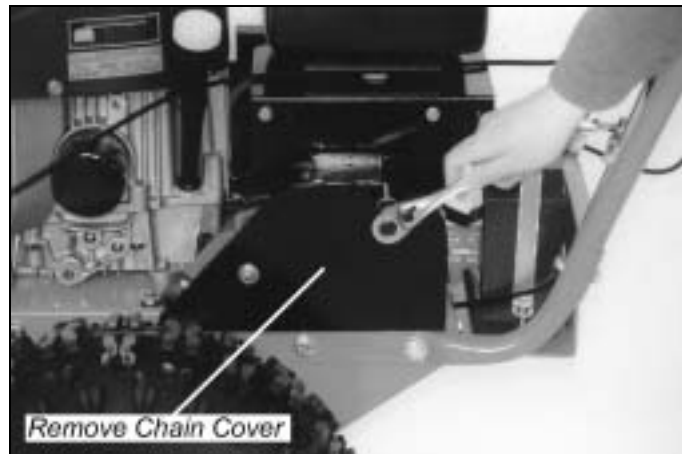


Figure 7

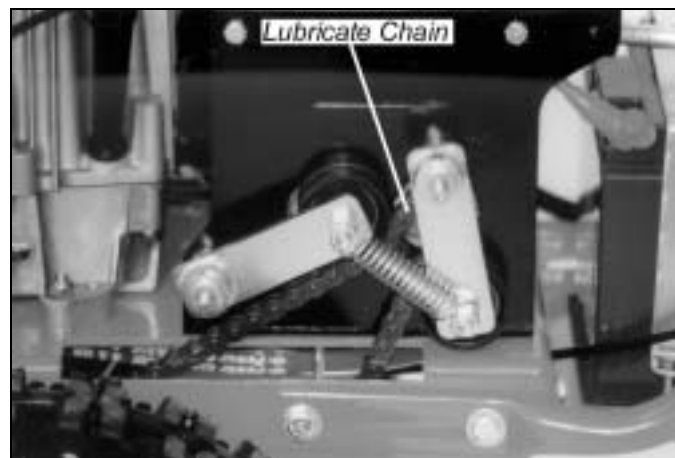


Figure 8

Belts

To Replace the Blade Belt

▲ WARNING: Always disconnect the spark plug wire before servicing your machine.

1. Remove the black belt guard by unscrewing the black knob, lifting the cover, and pulling up and back to remove it.
2. Release the belt tension lever (*Figure 9*).
3. Remove the belt from the pulley (*Figure 10*), then drop it from the engine pulley below the machine.

To mount the belt, follow the above procedure in reverse.

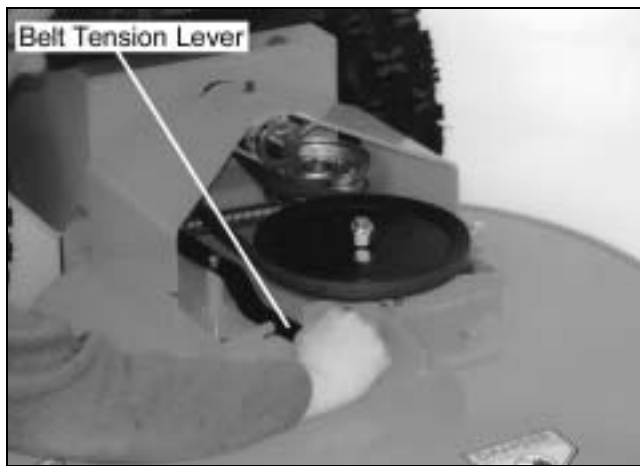


Figure 9



Figure 10

To Replace the Drive Belt

Tools Needed:

- 7/16" socket
- 1/2" wrench
- 9/16" wrench

▲ WARNING: Always disconnect the spark plug wire before servicing your machine.

1. Drain the gas and oil, or put the machine on a bench.
2. Remove the blade belt following the instructions above.
3. Remove the pin and collar (*Figure 11*), then pull the power unit away from the deck.



Figure 11

4. Tilt the power unit back on the handlebars.
5. Remove the nuts on the clutch bracket and the clutch drive spring (*Figure 12*).
6. Remove the spring (*Figure 13*).

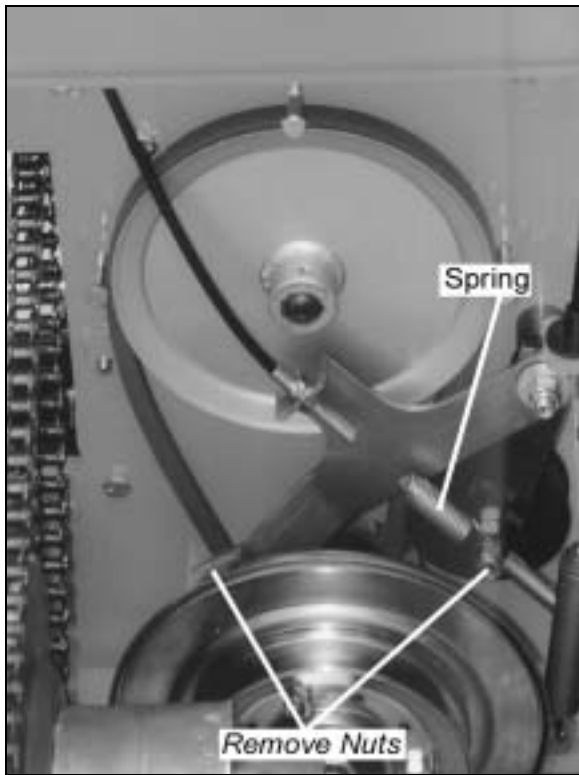


Figure 12

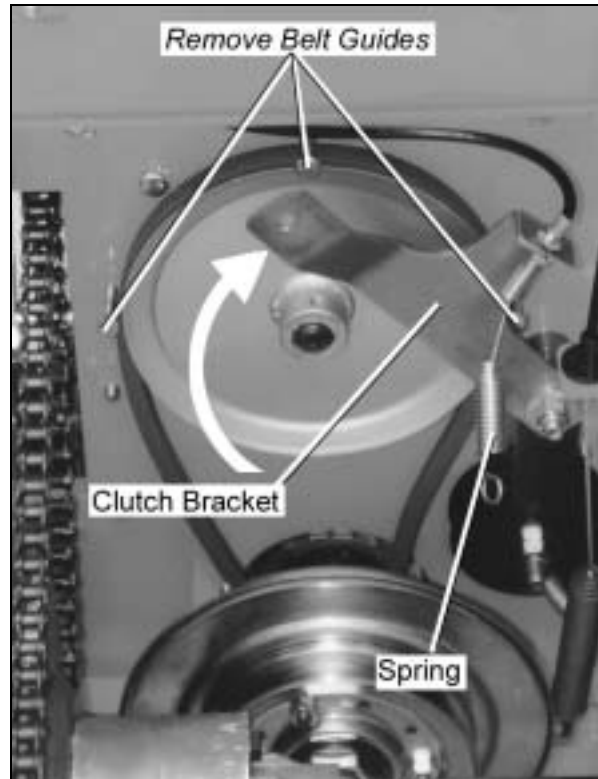


Figure 13

7. Lift and swing the clutch bracket out of the way (*Figure 13*).
8. Remove the three belt guides (*Figure 13*).
9. Loosen the belt retainer bolts on the outside of the frame (one on each side) and slide the retainer back (*Figure 14*).
10. Remove the belt.

To mount the new belt, reverse the above procedure.

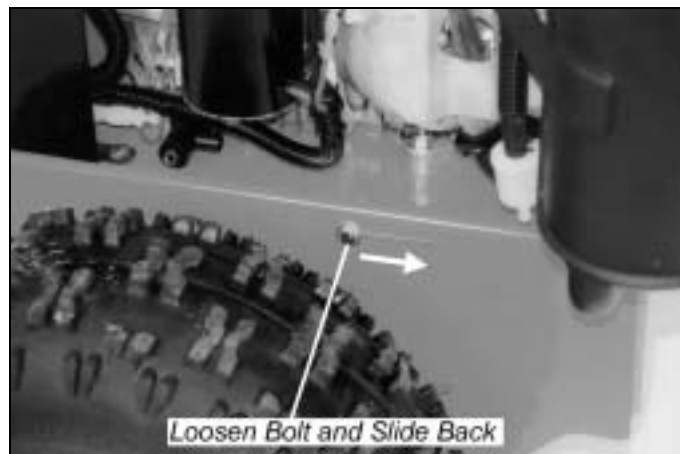


Figure 14

To Remove/Replace the Blade

Tools Needed:

- 15/16" wrench or socket
- air wrench if available
- rag or gloves to handle the blade
- 2 x 4 to brace blade

⚠ WARNING: Always disconnect the spark plug wire before servicing your machine.

1. Block the blade with a piece of wood between the blade and the skid on the chute side of the deck (*Figure 15*).
2. Remove the blade lock nut (right-hand, regular thread) and washer.

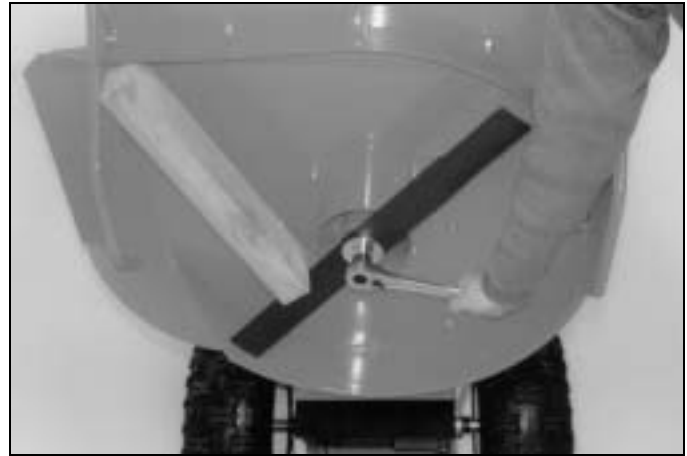


Figure 15

Caution: Be careful not to get injured when pushing or pulling the wrench next to the blade.

3. Remove the blade.
4. Mount the new blade, washer and lock nut.

Note: Be sure the blade is seated completely over the small ridge in the spindle hub before tightening the lock nut.

To Adjust the Wheel Clutch

When properly adjusted, tension on the wheel clutch lever should increase when the lever is about parallel to (almost touching) the handlebar grip.

Tools Needed:

- (2) 1/2" wrenches

⚠ WARNING: Always disconnect the spark plug wire before servicing your machine.

1. Find the wheel clutch adjustment on the clutch bracket on the underside of the machine (*Figure 16*).
2. Loosen the nut on the front (threaded) side of the bracket by 1/8" to 1/4", then tighten the nut on the back against the bracket. Check the tension on the clutch lever and repeat the adjustment as needed.

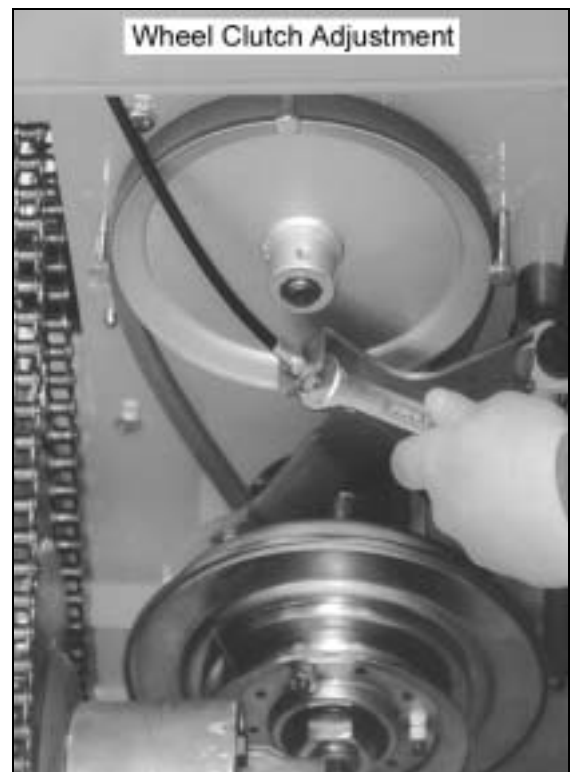


Figure 16

To Remove/Replace the Drive Chain

Tools & Supplies Needed:

- 1/2" wrench or socket (chain cover)
- 7/16" wrench or socket (chain cover)
- flat-head screwdriver
- pliers

⚠ WARNING: Always disconnect the spark plug wire before servicing your machine.

1. Remove the chain cover (*Figure 17*).
2. Remove the master chain link (*Figure 18*). First remove the lock clip (A) with a flat-head screwdriver and pliers. You'll need to lift one side and rotate the clip to get it off the master link. Next, remove the side plate (B). Then remove the master chain link.
3. Slowly feed the chain out.
4. Mount the new chain.
5. Add the master chain link.
6. Replace the chain cover and tighten the lock nuts.

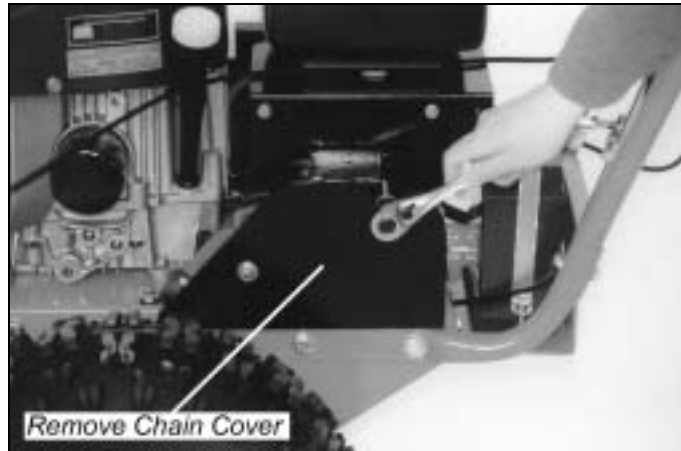


Figure 17

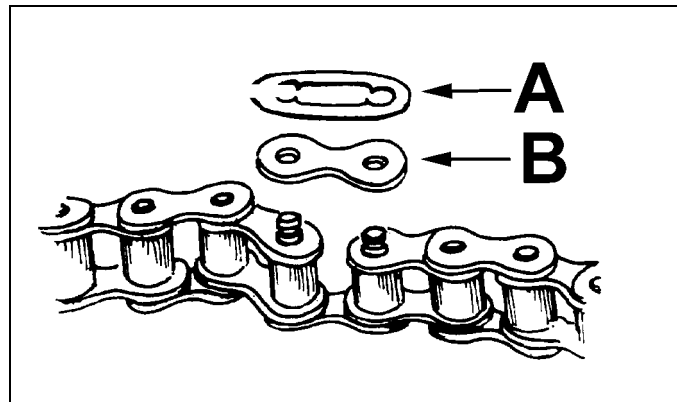


Figure 18

To Adjust the Blade Engagement Cable

If the blade won't cut, or seems to slip in heavy material, check the blade engagement cable.

Tool Needed:

- 1/2" open-end wrench

⚠ WARNING: Always disconnect the spark plug wire before servicing your machine.

On the right handlebar there is a black bracket for adjusting the blade engagement cable (*Figure 19*). To tighten the cable, turn the center portion of the adjuster counter clockwise. To loosen the cable, turn the adjuster clockwise.

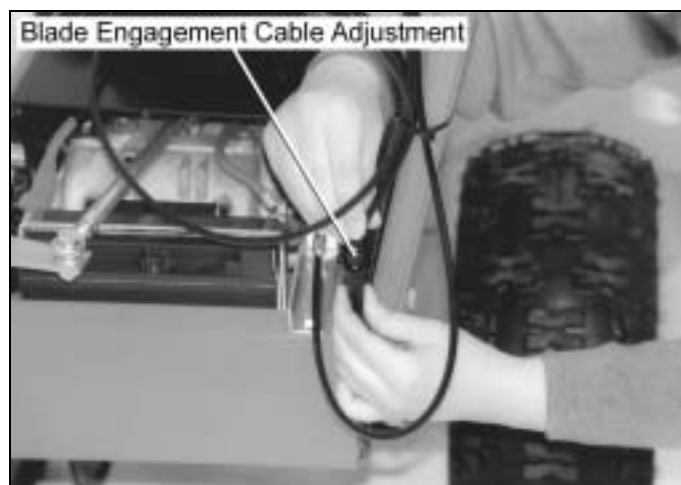


Figure 19

To Remove the Wheels

Tools Needed:

- 3/4" socket with extension

⚠ WARNING: Always disconnect the spark plug wire before servicing your machine.

1. Block the machine so the wheel to be removed is off the ground.
2. Remove the three nuts and slide the wheel off.



Figure 20

To Adjust the Parking Brake

Tool Needed:

- 1/2" open end wrench

⚠ WARNING: Always disconnect the spark plug wire before servicing your machine.

To adjust the parking brake, tighten or loosen the nut shown in Figure 21. This will increase or decrease pressure on the brake pad.

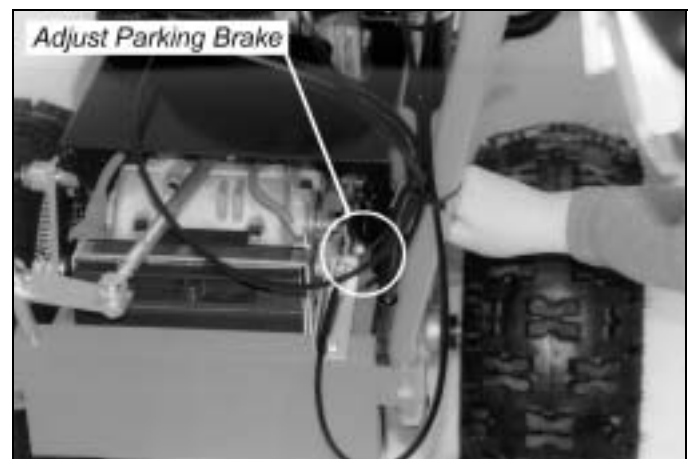


Figure 21

Transmission

The transmission is maintenance-free and does not need additional lubrication.

To Remove or Change the Deck

⚠ WARNING: Always disconnect the spark plug wire before servicing your machine.

1. Remove the black belt guard by unscrewing the black knob, lifting the cover and pulling up and back to remove it.
2. Release the belt tension lever (*Figure 22*).
3. Remove the belt from the pulley (*Figure 23*).
4. Remove the pin and collar (*Figure 24*), then pull the power unit away from the deck.

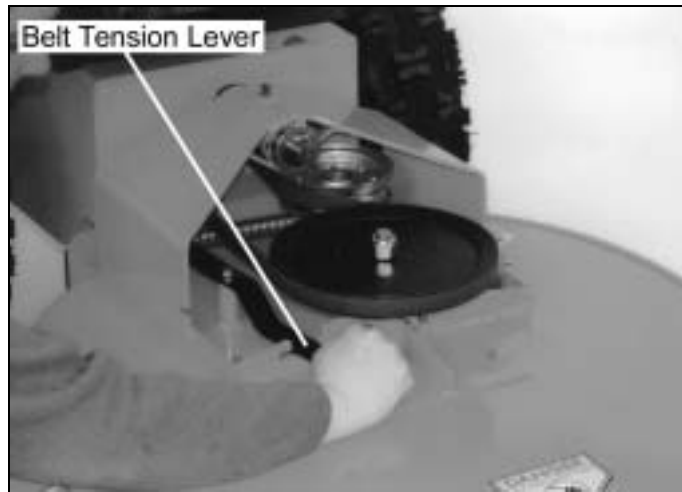


Figure 22

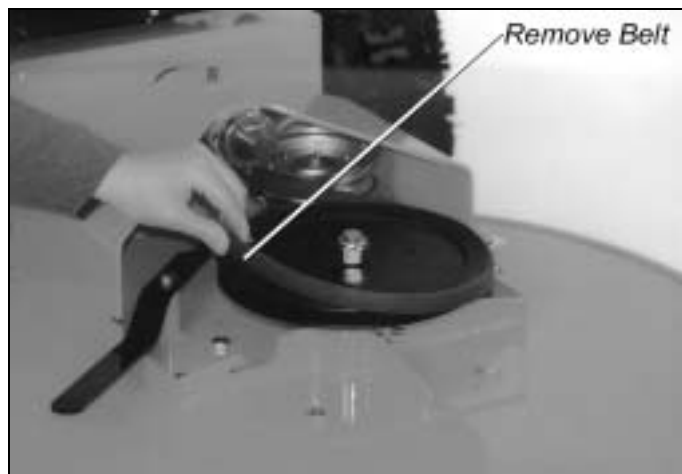


Figure 23



Figure 24

End of Season & Storage

⚠ WARNING: Always disconnect the spark plug wire before servicing your machine.

Please refer to the engine manufacturer's owner's manual for engine-specific procedures.

- Change the oil (and oil filter, if applicable).
- Remove the spark plug and pour about 1 ounce of motor oil into the cylinder hole. Replace the plug and pull the recoil starter rope until you feel strong resistance. This will coat the piston and seat the valves to prevent moisture buildup.
- Clean/replace the air filters.
- Clean dirt and debris from the cylinder head cooling fins, blower housing, debris screen and muffler area of the engine.
- If your engine has a fuel filter, replace it.
- If your DR[®] FIELD and BRUSH MOWER will be idle for more than 30 days, we recommend using a gas stabilizer. This will prevent sediment from gumming up the carburetor. If there is dirt or moisture in the gas or tank, remove it by draining the tank. Completely fill the tank with fresh, unleaded gas and add the appropriate amount of stabilizer or gasoline additive. Run the engine for a short time to allow the additive to circulate. Close the fuel shut-off valve, if your machine is equipped with one, to prevent carburetor overflow and leakage.
- Store the battery in a dry area that will not freeze. If the machine is not used over a long period, the battery should be charged every four to six weeks. See page 9.
- Remove any wrapped weeds from the blade bearing housing. Clean grass and debris from the top and underneath the mower deck with a stiff brush.
- Check the blade for nicks and wear. Remove the blade and sharpen, or have it professionally sharpened if needed.

Troubleshooting

⚠ WARNING: Always disengage the blade, turn off the engine and disconnect the spark plug wire before servicing your machine.

Please refer to the Engine Manufacturer's Owner's Manual for specific engine maintenance and troubleshooting information.

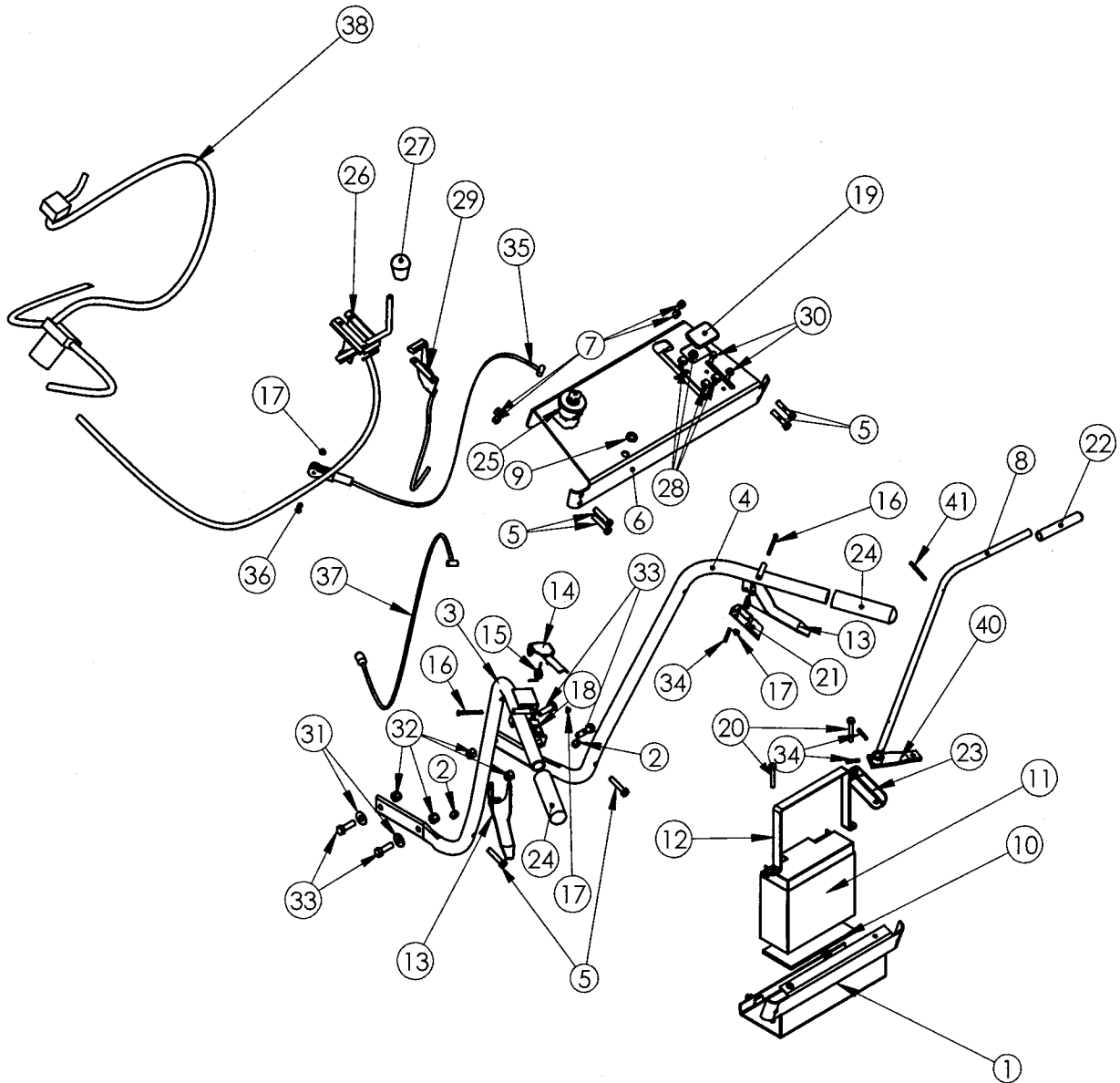
Belts	
<i>The belt frays or rolls over the pulley</i>	<ul style="list-style-type: none"> ⇒ A pulley groove may be nicked. Check the belt for wear and hard spots. File off any nicks on the pulley. ⇒ The belt may be stretched. Replace it.
Blade	
<i>The cut material is not being properly discharged out of the right side of the machine</i>	⇒ The discharge may be blocked. Disengage the blade, turn off the engine, set the brake and disconnect the spark plug wire, then check for debris.
<i>Heavier growth gets hung up under machine and does not discharge</i>	⇒ Try removing the baffle under the front of the mowing deck.
<i>Blade vibrates when engaged</i>	⇒ The blade may not be seated properly on the hub. Loosen the blade nut, reset the blade and tighten the nut.
<i>The blade is not cutting or is loose</i>	<ul style="list-style-type: none"> ⇒ The spindle bearings may be bad. ⇒ The blade may not be seated properly on the hub. Loosen the blade nut, reset the blade and tighten the nut.
Engine	
<i>Recoil will not pull out or is difficult to pull. (8 & 10 HP models only)</i>	<ul style="list-style-type: none"> ⇒ Check that the blade lever is in the disengaged position. ⇒ The recoil may be broken or jammed. Try to turn the engine pulley by hand, with the spark plug wire off. If it turns, the recoil is broken or jammed.
<i>Engine won't start</i>	<ul style="list-style-type: none"> ⇒ Check for adequate, fresh fuel. ⇒ Check that the fuel shut-off valve is turned on, if your machine is equipped with one. ⇒ Check the fuel filter to see if it is clear. Remove the line from the engine side of the filter. If gas flows freely, it's OK. ⇒ Check the throttle adjustment and travel. ⇒ Is the blade engagement lever down (disengaged)? It should be. ⇒ Check the spark plug. <p><u>Electric-Starting Models:</u></p> <ul style="list-style-type: none"> ⇒ Tecumseh and Kawasaki engines have a 10 amp fuse on the wiring harness. Check the fuse and replace if needed.

<i>Engine won't start (continued)</i>	<ul style="list-style-type: none"> ⇒ Check the wire connections—especially the ground connection, the large green wire coming from the battery, where it connects to the engine. ⇒ Check the wire connections to the solenoid. Disconnect the green battery ground wire first to avoid sparks. Check to be sure that all of the connections are clean and tight. Reconnect the battery ground wire. ⇒ Check the ground connection on the solenoid (10.5 HP ES, 12.5 HP) where it's bolted to the frame. Using a wrench or socket, spin the bolts and tighten them to ensure a good connection to the frame.
<i>Engine lacks power</i>	<ul style="list-style-type: none"> ⇒ Check the throttle travel and adjustment. ⇒ Clean or replace the air filter if needed. ⇒ Check the spark plug and replace if needed. ⇒ Add clean, fresh, unleaded gas. ⇒ Check the oil level and adjust as needed.
<i>Engine skips, pops, misses, shakes</i>	<ul style="list-style-type: none"> ⇒ Check the spark plug and replace if needed. ⇒ Clean or replace the air filter if needed. ⇒ Replace gas with fresh, unleaded fuel.
<i>Engine smokes</i>	<ul style="list-style-type: none"> ⇒ Check the oil level and adjust as needed. ⇒ You may be operating the machine on too great an incline. ⇒ Check the air filter and clean or replace if needed. ⇒ You may be using the wrong oil—too light for the temperature. Refer to your Engine Manufacturer's Owner's Manual for detailed information. ⇒ Clean the cooling fins if they're dirty.
Transmission	
<i>Machine is hard to get into reverse</i>	<ul style="list-style-type: none"> ⇒ If you find it difficult to shift into reverse, lightly pull the clutch lever as you pull the shift lever into reverse then quickly release the clutch lever.
Wheels	
<i>Wheels pulling left or right</i>	<ul style="list-style-type: none"> ⇒ Check the tire pressure. There should be 14 psi in each tire.

For technical assistance please call Toll-Free 1(800)DR-OWNER(376-9637).

Handlebar Assembly

Note: The circled numbers match the first column of numbers on the parts list.

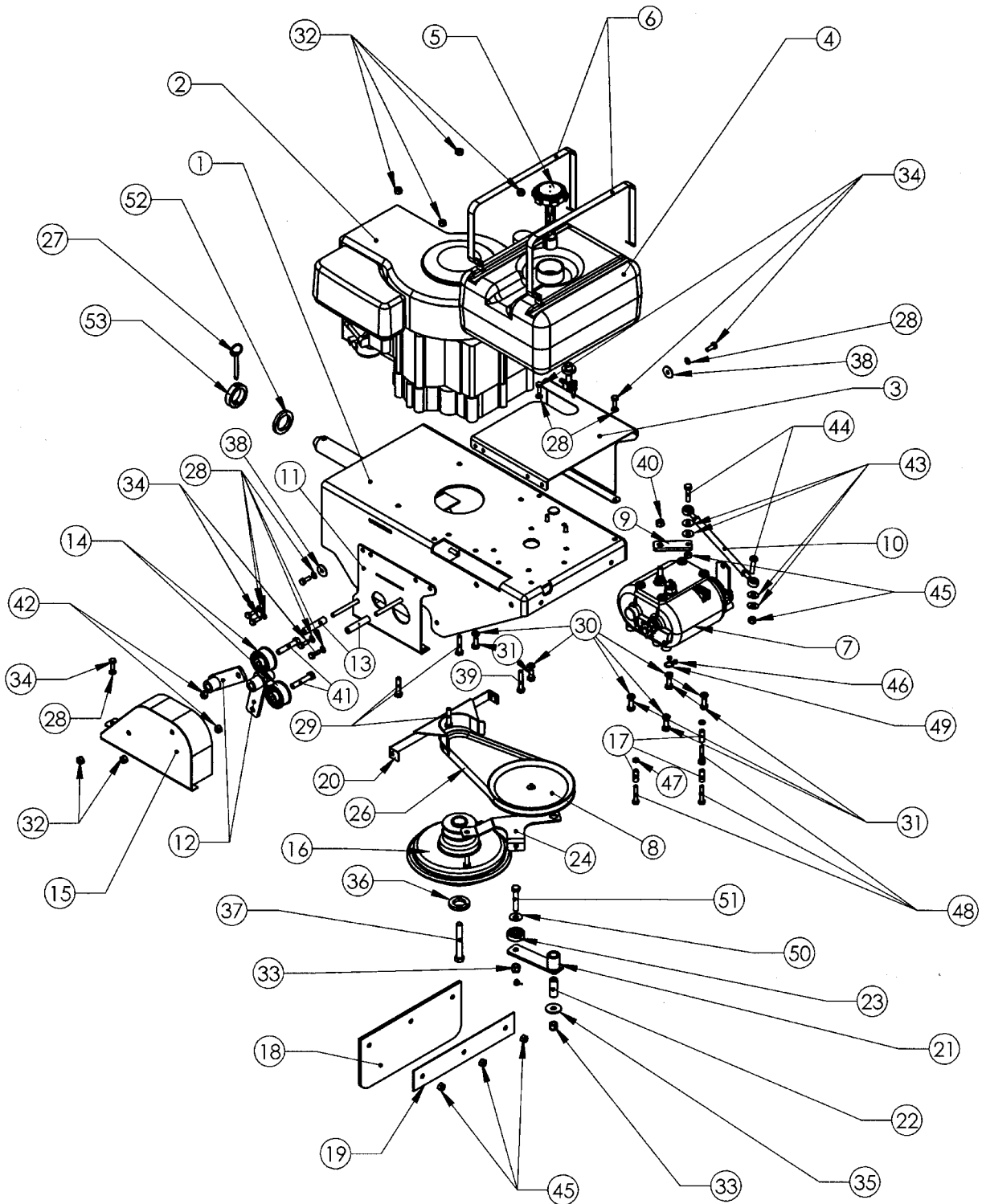


Parts List—Handlebar Assembly

<u>Ref#</u>	<u>Qty</u>	<u>Part#</u>	<u>Description</u>	<u>Ref#</u>	<u>Qty</u>	<u>Part#</u>	<u>Description</u>
1	1	150041	Battery Shelf	29	1	112111	Cable Throttle (B&S and Tecumseh)
2	4	110761	Nut, Nylon Lock, 5/16" - 18			139051	Cable, Throttle (Kawasaki)
3	1	151221	Handlebar, Left Hand	30	2	151401	Screw, 1/4" – 20 x 3/4", Tri-Lobe
4	1	151211	Handlebar, Right Hand	31	4	112391	Washer, Flat, 3/8" USS
5	6	150091	Bolt, HCS, 5/16" – 18 x 1.5"	32	4	110751	Nut, Nylon Lock, 3/8" - 16
6	1	150221	Control Panel	33	4	150431	Bolt, HCS, 3/8" – 16 x 1-1/4"
7	4	110761	Nut, Nylon Lock, 5/16" - 18	34	1	110961	Pin, Roll, 3/16" x 1"
8	1	150391	Shift Lever	35	1	150081	Cable, Transmission Brake
9	1	112441	Washer, 1/2" ID x 3/4" OD x 1/8", Nylon	36	1	151431	Pin, Clevis, 3/16" x 3/4"
10	1	101341	Battery Pad	37	1	150161	Cable, Traction Drive
11	1	104831	Battery, 17AH, 12V	38	1	150521	Wire Harness, TEC, E/S, 12.2HP
12	1	124511	Clamp, Battery 7-1/8" x 5-1/2"			150541	Wire Harness, Kawasaki, E/S, 15HP
13	2	110281	Clutch and Brake Lever			150851	Wire Harness, B&S, M/S, 8HP
14	1	150381	Operator Presence Lever			151891	Wire Harness, B&S, E/S, 8 & 10HP
15	1	151241	Spring, Torsion, Operator Presence	39	1	110761	Nut, Nylon Lock, 5/16" - 18
16	2	151421	Pin, Clevis 3/16" x 1.875" Grooved, ZP	40	1	100241	Shift Arm with Hub
17	3	150861	Nut, 3/16", Push, Washer Cap	41	1	110971	Pin, Roll, 3/16" x 1-3/4"
18	1	150571	Switch, Operator Presence	<u>Safety Labels</u>			
19	1	151311	Plug, Hour Meter Hole	1	1	136821	Operator Presence Label
20	2	111481	Bolt, HCS, 1/4" – 20 x 1-3/4"	1	1	136841	Caution Hot Surface Label Right Arrow, Briggs
21	1	153691	Parking Brake Lock Lever			136831	Caution Hot Surface Label Left Arrow, Kawasaki/Tec.
22	1	110221	Grip, Shift Handle	1	1	136501	Wheel Clutch Label
23	1	151181	Brake Cable Bracket	1	1	124371	American Flag Label
24	2	150471	Grip, 1" OD, 4.5" L	1	1	127811	Warning: Add Oil Label
25	1	151361	Switch, with Key, Snap-in, 4 Positions	1	1	109831	Parking Brake Label
		151931	Switch, with Key, Snap-in 2 Positions	1	1	153321	DR All Terrain Mower Name Label
26	1	150151	Cable, PTO Clutch	1	1	153351	Pulley Cover Label
27	1	150361	Knob, Blade Engage Cable	1	1	153331	Throttle Control Label
28	4	111731	Screw, 5/16" – 18 x 1/2"	1	1	153311	Control Panel Label
				2	1	136491	Danger, Deck Label

Power Unit Assembly

Note: The circled numbers match the first column of numbers on the parts list.



Parts List—Power Unit Assembly

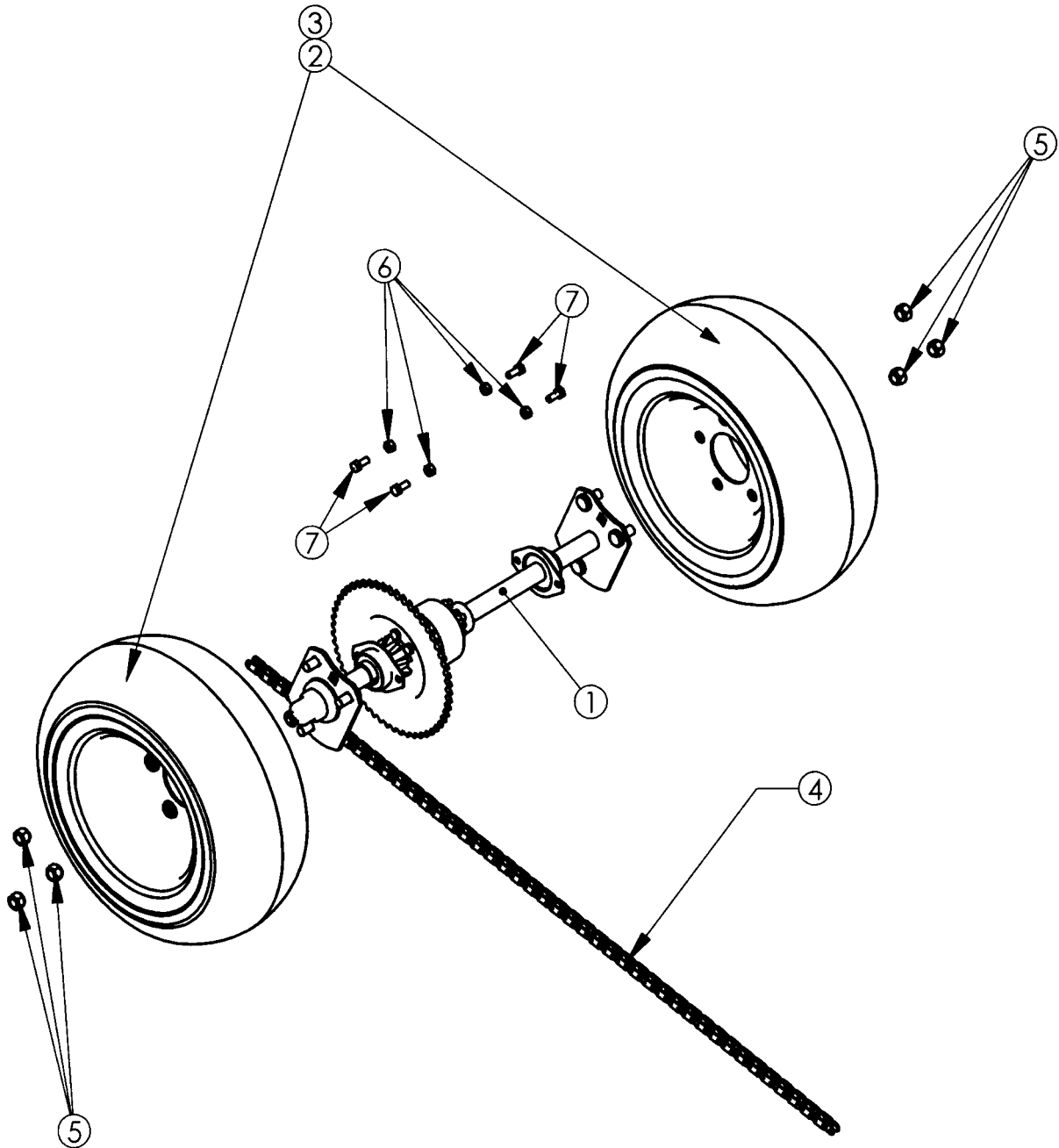
Ref#	Qty	Part#	Description	Ref#	Qty	Part#	Description
1	1	150261	Frame, Main	31	6	123211	Bolt, HCS, 5/16" – 18 x 3/4"
2	1	100831	Engine, 10.5HP, B&S, e/s	32	6	110761	Nut, Nylon Lock, 5/16" - 18
		100861	Engine, 12.5HP, TEC, e/s	33	2	110751	Nut, Nylon Lock, 3/8" - 16
		139091	Engine, 15.0HP, KAW, e/s	34	9	119831	Bolt, HCS, 1/4" – 20 x 3/4"
		139081	Engine, 8.0HP, B&S, e/s	35	1	112391	Washer, Flat, 3/8" USS
		147011	Engine, 8.0HP, B&S, m/s	36	1	151321	Washer, Lock, 7/16" Split
3	1	150411	Mount, Fuel Tank	37	1	150071	Bolt, HCS, 7/16" – 20 x 3-1/4"
4	1	150291	Fuel Tank Assembly				
5	1	150011	Fuel Cap With Gauge	38	2	112381	Washer, Flat, 1/4" USS
6	2	150531	Strap, 2.5 Gal Fuel Tank	39	1	150451	Bolt, HCS, 5/16" – 18 x 1-3/4"
7	1	150591	Transmission				
8	1	111141	Pulley, V, 7" OD, 4L or A Belt	40	1	150771	Nut, Nylon Lock, 3/8" - 24
				41	2	126861	Bolt, HCS, 3/8" – 16 x 2"
9	1	151001	Transmission Shift Arm	42	2	110761	Nut, Nylon Lock, 5/16" - 18
10	1	101441	Tie Rod, Shift, 7" L	43	4	112411	Washer, Flat, 5/16" USS
11	1	150171	Chain Idler Support Plate	44	2	123361	Bolt, HCS, 5/16" – 18 x 1-1/4"
12	2	150341	Chain Idler Adjuster Arm				
13	2	150101	Bushing, .328" ID, .500" OD, 2.32" L	45	5	110761	Nut, Nylon Lock, 5/16" - 18
14	2	150481	Pulley, Flat Idler, 1.875" OD, .375" Bore	46	2	111691	Set Screw, 5/16" – 18 x 1/4"
15	1	150181	Guard, Chain	47	3	101811	Washer, Lock, 1/4" Split
16	1	150211	Clutch, PTO	48	3	101451	Bolt, 1/4" – 20 x 1-1/2"
17	3	111871	Spacer, 1/4" ID, .375" OD, 1.0" L	49	1	111241	Ring, Retaining, 5/8"
18	1	150241	Debris Guard, 11.5" x 5.12"	50	1	112391	Washer, Flat, 3/8" USS
19	1	150551	Support, Debris Guard	51	1	126861	Bolt, HCS, 3/8" – 16 x 2"
20	1	150201	Belt Guide, Engine	52	1	151381	Washer, 1.375" ID, 2.0" OD x .25" Thk
21	1	150611	Idler Arm, Traction Drive	53	1	151151	Washer, 1.38" ID, 2.0" OD, .5" L
22	1	151111	Bushing, Idler Traction Drive				
23	1	108501	Pulley, Flat, Idler, 3.0" OD				
24	1	150021	Anti-Rotation Strap				
25	1	150501	Spring, E, 438" OD x .045" Wire x 2.5 L				
26	1	150061	Belt, A31, 1/2" x 33"				
27	1	150461	Pin, Detent, 1/4" x 2"				
28	9	112481	Washer, Lock, 1/4" External Tooth				
29	3	150091	Bolt, HCS, 5/16" – 18 x 1-1/2"				
30	6	112431	Washer, Lock, 5/16" Split				

Parts List—Brush Deck Assembly

Ref#	Qty	Part#	Description	Ref#	Qty	Part#	Description
1	1	150761	Brush Deck	18	2	150721	Attachment Swivel Bushing
2	1	150911	Spindle Support	19	2	101311	Nut, Nylon Lock, 5/8" - 11
3	1	151371	Spindle	20	1	150691	Bolt, HCS, 3/8" – 16 x 2-1/2"
4	2	150891	Bearing, Ball, .787" Bore	21	9	110751	Nut, Nylon Lock, 3/8" - 16
5	1	151331	Key, Parallel, Round Ends, 1/4" x 3/16" x 7/8"	22	1	112391	Washer, Flat, 3/8" USS
6	1	150901	Shim, .750" ID, .875" OD, 1.0" L with .1875" Slot	23	6	123211	Bolt, HCS, 5/16" – 18 x 3/4"
7	1	150121	Pulley, V, 8.5" OD, 5L or B Belt	24	7	111521	Bolt, HCS, 3/8" – 16 x 1"
8	1	150871	Belt Tension Release Lever	25	1	150701	Bolt, HCS, 3/8" – 16 x 4"
9	1	150831	Idler Arm	26	6	110761	Nut, Nylon Lock, 5/16" - 18
10	1	150711	Bushing, Idler	27	1	145291	Bolt, 5/16" – 18 x 3/4" Carriage
11	1	150641	Anti-Wrap Guard	28	1	112411	Washer, Flat, 5/16" USS
12	1	151141	Spindle Hub	29	1	150681	Belt, B63K, 5/8" x 66"
13	1	100721	Baffle	30	1	150731	Belt Cover
14	1	100481	Blade, 26" Air Tip	31	1	143661	Knob, 5/16"
15	1	101771	Blade Washer				
16	1	151271	Pulley, Flat Idler, 4" x 3/8" Bore				
17	1	150941	Spring, Extension, .112" Wire x .750" OD x 5" L				

Differential/Axle Assembly

Note: The circled numbers match the first column of numbers on the parts list.



Parts List—Differential/Axle Assembly

Ref#	Qty	Part#	Description
1	1	150251	Differential, Limited Slip
2	2	150621	Wheel & Tire, 18" x 6.50" – 8", Terr, 5 Lug
3		151721	Wheel & Tire, 18" x 6.50" – 8", Turf, 5 Lug
4	1	150191	Chain, #40, 88 Pitches with Master Link
5	6	150441	Nut, Lug, 1/2" - 13
6	4	110761	Nut, Nylon Lock, 5/16" - 18
7	4	123211	Bolt, HCS, 5/16" – 18 x 3.75", Gr5 ZP

Notes

Daily Checklist for the DR[®] FIELD and BRUSH MOWER

- ✓ **OIL:** With the machine on a level surface, remove the oil fill cap and check the oil level. Fill the reservoir according to the dipstick with SAE30 HD motor oil.
- ✓ **GAS:** Fill the gas tank with fresh, unleaded gasoline, making sure the gas valve on the bottom of the tank is open. Always close the gas valve when storing your machine.
- ✓ **ENGINE:** It is very important to keep the engine clean. Remove grass and other debris from the engine cooling fins and debris guard. A dirty engine retains heat and can cause damage to internal engine components.
- ✓ **BELTS:** Check the belts for wear, proper alignment and tension.
- ✓ **BLADE:** Check the blade for tightness, nicks and wear. Remove any wrapped weeds and grass from the blade bearing housing to prevent buildup.

COUNTRY HOME PRODUCTS[®]

Meigs Road, P.O. Box 25, Vergennes, Vermont 05491

TOLL-FREE 1(800)DR-OWNER(376-9637) • www.dr-owner.com