

# DR<sup>®</sup> WALK BEHIND BLOWER

## SAFETY & OPERATING INSTRUCTIONS



Model:  
X12

Serial No. \_\_\_\_\_

Order No. \_\_\_\_\_

DR Power Equipment  
Toll-free phone: 1-800-DR-OWNER (376-9637)  
Website: [www.DRpower.com](http://www.DRpower.com)

### **WARNING**

Read and understand this manual and all instructions before operating the DR WALK BEHIND BLOWER.



# Table of Contents

Chapter 1: General Safety Rules..... 4

Chapter 2: Setting Up The DR® WALK BEHIND BLOWER ..... 8

Chapter 3: Operating the DR® WALK BEHIND BLOWER ..... 10

Chapter 4: Maintaining the DR® WALK BEHIND BLOWER..... 13

Chapter 5: Troubleshooting ..... 14

Chapter 6: Parts Lists, Schematic Diagrams ..... 16

## Conventions used in this manual

### DANGER

This indicates a hazardous situation, which, if not avoided, will result in death or serious injury.

### WARNING

This indicates a hazardous situation, which, if not avoided, could result in death or serious injury.

### CAUTION

This indicates a hazardous situation, which, if not avoided, could result in minor or moderate injury.

### NOTICE

This information is important in the proper use of your machine. Failure to follow this instruction could result in damage to your machine or property.

## Serial Number and Order Number

A Serial Number is used to identify your machine and is located on the Serial Number Label on your machine. An Order Number is used to check and maintain your order history and is located on the packing slip. For your convenience and ready reference, enter the Serial Number and Order Number in the space provided on the front cover of this manual.

## Additional Information and Potential Changes

DR Power Equipment reserves the right to discontinue, change, and improve its products at any time without notice or obligation to the purchaser. The descriptions and specifications contained in this manual were in effect at printing. Equipment described within this manual may be optional. Some illustrations may not be applicable to your machine.

## California Proposition 65

 **WARNING**  
**CANCER AND REPRODUCTIVE HARM - [www.P65Warnings.ca.gov](http://www.P65Warnings.ca.gov).**

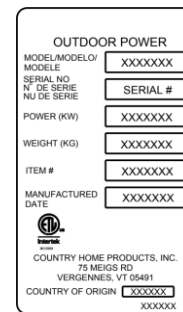


Figure 1

## Chapter 1: General Safety Rules

---

### **WARNING**

Read this safety & operating Instructions manual before you use the DR WALK BEHIND BLOWER. Become familiar with the operation and service recommendations to ensure the best performance from your machine. If you have any questions or need assistance, please contact us at [www.DRpower.com](http://www.DRpower.com) or call toll-free 1-800-DR-OWNER (376-9637) and one of our Technical Support Representatives will be happy to help you.

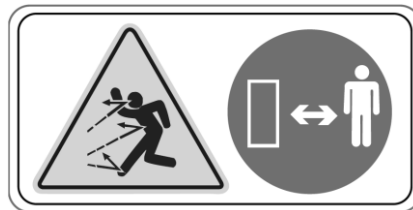
---

### **Labels**

Your DR WALK BEHIND BLOWER carries prominent labels as reminders for its proper and safe use. Shown below are copies of all the Safety and Information labels that appear on the equipment. Take a moment to study them and make a note of their location on your WALK BEHIND BLOWER as you set up and before you operate the unit. Replace damaged or missing safety and information labels immediately.



#A0000256659



#A0000256673

**WARNING: Check Oil  
Before Starting Engine**

#137581

## Protecting Yourself and Those Around You

---

### WARNING

This is a high-powered machine, with moving parts operating with high energy at high speeds. Use proper clothing and safety gear when operating this machine to prevent or minimize the risk of severe injury. You must operate the machine safely. Unsafe operation can create a number of hazards for you, as well as anyone else in the nearby area. Always take the following precautions when operating this machine:

- Always wear protective goggles or safety glasses with side shields while operating this blower to protect your eyes from possible foreign objects thrown from the machine.
  - Wear shoes with non-slip treads when using your DR WALK BEHIND BLOWER. If you have safety shoes, we recommend wearing them. Do not use the machine while barefoot or wearing open sandals.
  - Avoid wearing loose clothing or jewelry, which can catch on the machine's moving parts.
  - We recommend wearing gloves while using your DR WALK BEHIND BLOWER. Be sure your gloves fit properly and do not have loose cuffs or drawstrings.
  - Wear long pants while operating the machine.
  - Use ear protectors or ear plugs rated for at least 20 dba to protect your hearing.
  - Never allow people who are unfamiliar with these instructions to use the blower. Allow only responsible individuals who are familiar with these rules of safe operation to use your machine.
  - Never place your hands, feet, or any part of your body near or under any moving part while the machine is running.
  - Keep bystanders away from your work area at all times. To be safe, do not operate the machine near small children or pets, and never allow children to operate the blower. Stop the engine when another person or pet approaches.
  - Never operate the engine with the air cleaner or cover over the carburetor air-intake removed, except for adjustment. Removal of such parts could create a fire hazard. Do not use flammable solutions to clean air filter.
  - The muffler and engine become very hot and can cause a severe burn; do not touch.
  - Never, under any conditions, remove, bend, cut, fit, weld, or otherwise alter standard parts on the DR WALK BEHIND BLOWER. This includes all shields and guards. Modifications to your machine could cause personal injuries and property damage and will void your warranty.
- 

## Safety for Children and Pets

---

### WARNING

Tragic accidents can occur if the operator is not alert to the presence of children. Children are often attracted to the machine and the blowing activity. **Never** assume that children will remain where you last saw them.

- Keep children out of the work area and under the watchful care of a responsible adult.
  - Be alert and always turn off the DR WALK BEHIND BLOWER engine if children or pets enter the work area.
  - Before, and while moving backwards, look behind, and **down** for small children and pets.
  - Never allow children to operate the blower.
  - Use extra care when approaching blind corners, shrubs, trees, or other objects that may obscure your vision.
-

## Safety with Gasoline-Powered Machines

### WARNING

Gasoline is a highly flammable liquid. Gasoline also gives off flammable vapor that can be easily ignited and cause a fire or explosion. Never overlook the hazards of gasoline. Always follow these precautions:

- Never run the engine in an enclosed area or without proper ventilation as the exhaust from the engine contains carbon monoxide, which is an odorless, tasteless, and deadly poisonous gas.
- Store all fuel and oil in containers specifically designed and approved for this purpose and keep away from heat and open flame, and out of the reach of children.
- Fill the gasoline tank outdoors with the engine off and allow the engine to cool completely. Do not handle gasoline if you or anyone nearby is smoking, or if you are near anything that could cause it to ignite or explode. Replace the fuel tank and fuel container caps securely.
- If you spill gasoline, do not attempt to start the engine. Move the machine away from the area of the spill and avoid creating any source of ignition until the gas vapors have dissipated. Wipe up any spilled fuel to prevent a fire hazard and properly dispose of the waste.
- Allow the engine to cool completely before storing the DR WALK BEHIND BLOWER in any enclosure. Never store the machine with gas in the tank or a fuel container, near an open flame or spark such as a water heater.
- Never make adjustments or repairs with the engine running. Disconnect the spark plug wire and keep the wire away from the spark plug to prevent accidental starting.
- Never check for an ignition spark with the spark plug or spark plug wire removed. Use an approved spark tester.
- Never tamper with safety devices. Check their proper operation regularly.
- Never change the engine governor settings or modify the engine speed. Modifications will void your warranty.
- To reduce fire hazard, keep the engine and muffler area free of debris build-up such as leaves, grass, oil, grease, or any other combustible material. Clean the engine area after each use.
- Never operate the engine without the muffler. Inspect the muffler periodically and replace if necessary. If equipped with a muffler deflector, inspect the deflector periodically and replace if necessary.
- Never operate the engine with the air cleaner or the cover over the carburetor air-intake removed, except for adjustment. Removal of such parts could create a fire hazard.
- Always check fuel lines and fittings frequently for cracks or leaks, replace if necessary.

## Safety on Slopes

### WARNING

Slopes are a major factor related to slip and fall accidents, which can result in severe injury. All slopes require caution. If you feel uneasy on a slope, do not use the Blower on it. Always take the following precautions when using this machine on slopes:

#### **Always:**

- Move across the face of slopes; never up and down. Exercise extreme caution when changing direction on slopes.
- Remove objects such as stones, wire, rope, or rags.
- Watch for holes, ruts, or bumps in the landscape.

#### **Never:**

- **Never** use the Blower near drop-offs, ditches, or embankments; you could lose your footing or balance.
- **Never** use the Blower on slopes greater than 20 degrees, or any excessively steep slopes.
- **Never** use the Blower on wet, or slippery slopes; reduced traction could result in slipping.
- **Never** park the Blower on a steep grade or slope.

## General Safety

### **WARNING**

Operating this Blower safely is necessary to prevent or minimize the risk of **death or serious injury**. Unsafe operation can create a number of hazards for you. Always take the following precautions when operating this machine:

- Keep in mind that the operator or user is responsible for accidents or hazards occurring to other people, their property, and themselves.
- Your DR WALK BEHIND BLOWER is a powerful tool, not a plaything. Exercise extreme caution at all times. The design of this machine is to blow debris. Do not use it for any other purpose.
- Know how to stop the machine quickly.
- Never allow people or pets to ride on the DR WALK BEHIND BLOWER.
- Never operate the blower near hot or burning debris or any toxic or explosive materials.
- If the machine should start making an unusual noise or vibration, stop the engine and wait five minutes to cool. Vibration is generally a warning of trouble. Disconnect the spark plug wire and inspect for any worn or broken parts, loose hardware, or loose engine mounting bolts. Clean and repair and/or replace damaged parts.
- Always shut off the DR WALK BEHIND BLOWER engine, wait five minutes to cool, and disconnect the spark plug wire before attempting to inspect or maintain the machine.
- Always keep the equipment in a good safe operating condition. Always make certain nuts and bolts are tight and always use the supplied self-locking hardware; do not substitute.
- Use the DR WALK BEHIND BLOWER only in daylight.
- While using the blower, do not hurry or take things for granted. When in doubt about the equipment or your surroundings, stop the machine and take the time to look things over.
- Never leave the machine unattended with the engine running.
- Do not operate the machine when under the influence of alcohol, drugs, or medication.
- See manufacturer's instructions for proper operation and installation of accessories. Only use accessories approved by DR Power Equipment.

### ***A Note to All Users***

Under California law, and the laws of some other states, you are not permitted to operate an internal combustion engine using hydrocarbon fuels without an engine spark arrester. This also applies to operation on US Forest Lands. All DR WALK BEHIND BLOWERS shipped to California, New Mexico and Washington State are provided with spark arresters. Failure of the owner or operator to maintain this equipment in compliance with state regulations is a misdemeanor under California law and may be in violation of other state and/or federal regulations. Contact your State Park Association or the appropriate state organization for specific information in your area.

### ***Additional Information and Potential Changes***

DR Power Equipment reserves the right to discontinue, change, and improve its products at any time without notice or obligation to the purchaser. The descriptions and specifications contained in this manual were in effect at printing. Equipment described within this manual may be optional. Some illustrations may not be applicable to your machine.

No list of warnings and cautions can be all-inclusive. If situations occur that are not covered by this manual, the operator must apply common sense and operate this machine in a safe manner. Contact us at [www.DRpower.com](http://www.DRpower.com) or call 1 (800) DR-owner (376-9637) for assistance.

## Chapter 2: Setting Up The DR® WALK BEHIND BLOWER

It may be helpful to familiarize yourself with the controls and features of your DR WALK BEHIND BLOWER as shown in Figure 2 before beginning these procedures. If you have any questions at all, please feel free to contact us at [www.DRpower.com](http://www.DRpower.com).

### DR WALK BEHIND BLOWER Controls and Features

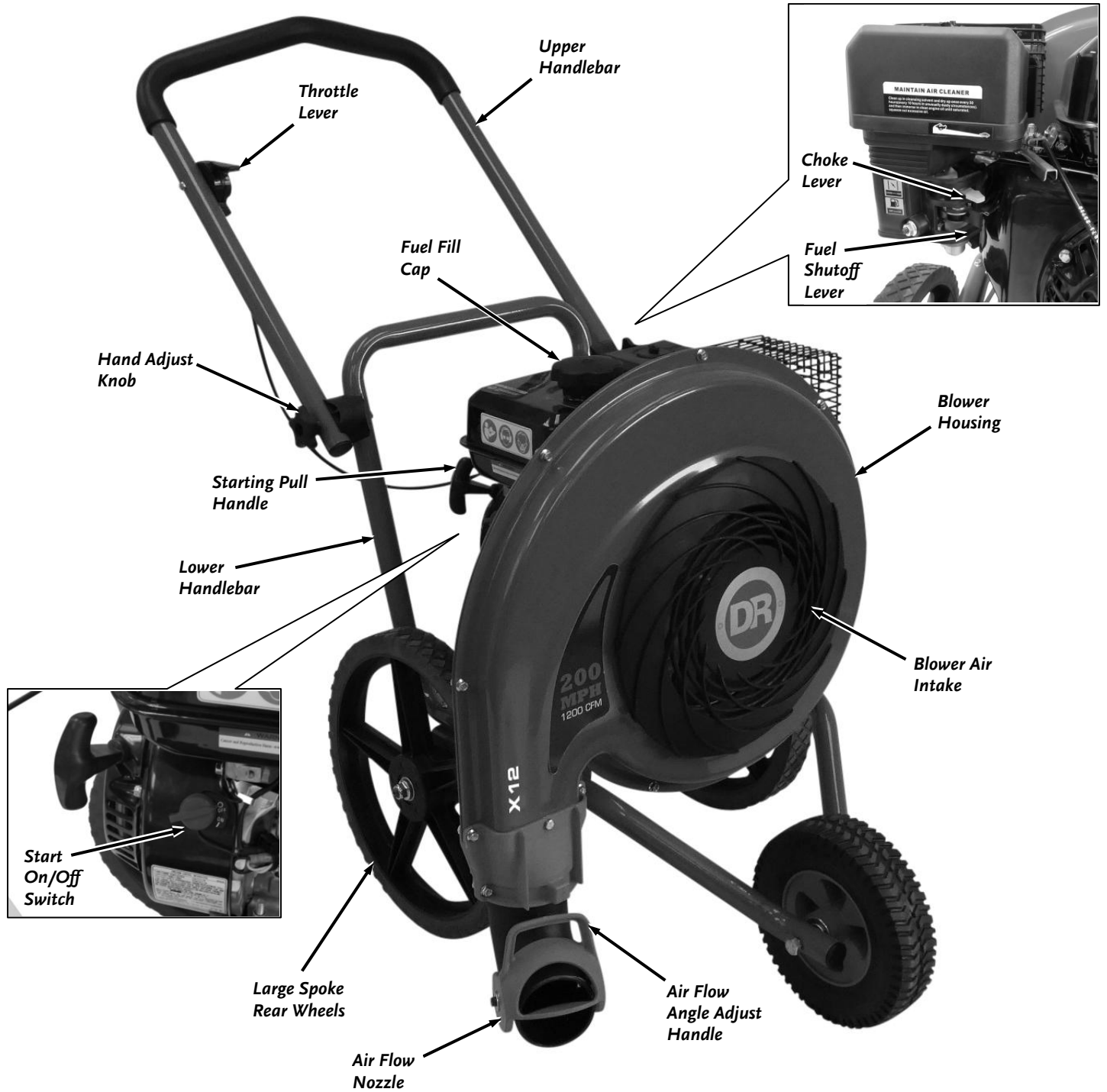


Figure 2



## Specifications

Model	X12
Engine	See Engine Owner's Manual
CFM	1200
MPH	200
Horizontal Rotation	90° left to 90° right
Vertical Rotation	35°
Nozzle Control	Manual
Drive	Push
Wheel Size	16" x 2", 10" x 2.75"
Frame	11 GA Steel
Machine Weight	105 lbs.
Machine Dimensions	40"H x 51"L x 25"W

## Assembling the DR WALK BEHIND BLOWER

The Blower is shipped fully assembled with the Handlebar in a folded position. You will need to adjust the Handlebar to the operating position before use.

1. Ensure that the two Handlebar Knobs are loosened (**Figure 3**).
2. Unfold the Handlebar to the operating position and tighten the Knobs to secure it.
3. Refer to the "Adding Engine Oil and Gasoline" section on the next page to continue setting up the machine.

## Adding Engine Oil and Gasoline

### Adding Oil

#### NOTICE

You must add Oil before starting the Engine. This machine is shipped without Oil. Traces of Oil may be in the reservoir from factory testing, but **you must add Oil before starting the Engine**. Fill the reservoir slowly, checking the level frequently to avoid overfilling.

1. Remove the Oil Fill/Dipstick from the right hand side of the engine and wipe the Oil off using a clean Rag (**Figure 4**).
2. Fill the engine with Oil until the Oil level is about a 1/4" below the top of the oil fill opening.

**Note:** Add Oil slowly and wait several minutes for oil to settle before rechecking Oil level.

3. Insert the Oil Fill/Dipstick but do not screw it in.
4. Remove the Dipstick and check the Oil level. Add oil as needed for correct level.
5. Replace and tighten the Oil Fill/Dipstick when finished.

### Adding Gasoline

1. Remove the Cap from the Fuel Tank and insert a clean Funnel (**Figure 4**).
2. Fill the fuel tank with fresh, clean Gasoline to 1 inch below the bottom of the filler neck to provide space for any fuel expansion.
3. Reinstall the Fuel Fill Cap securely and wipe up any spilled gasoline.

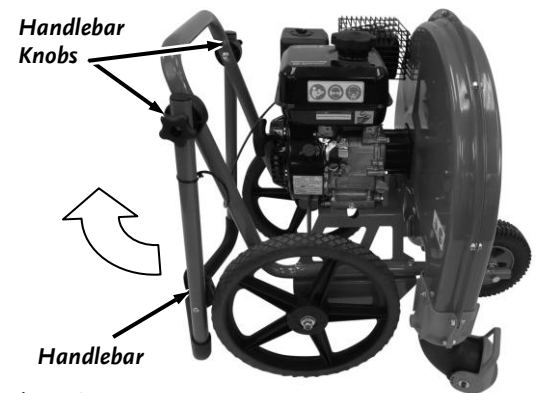


Figure 3

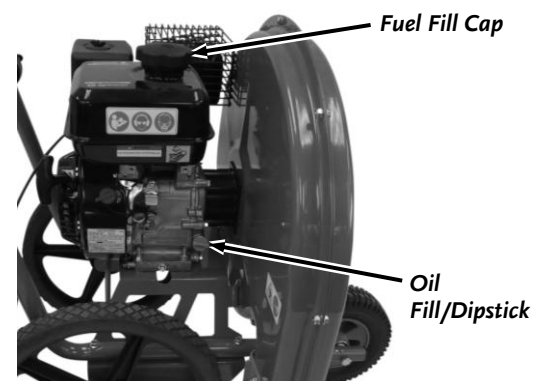


Figure 4

## Chapter 3: Operating the DR® WALK BEHIND BLOWER

It may be helpful to better familiarize yourself with the features of your DR WALK BEHIND BLOWER by reviewing **Figure 2** in Chapter 2 before beginning the steps outlined in this chapter. Always refer to the Engine manual for more specific Engine information.



Figure 5



Figure 6

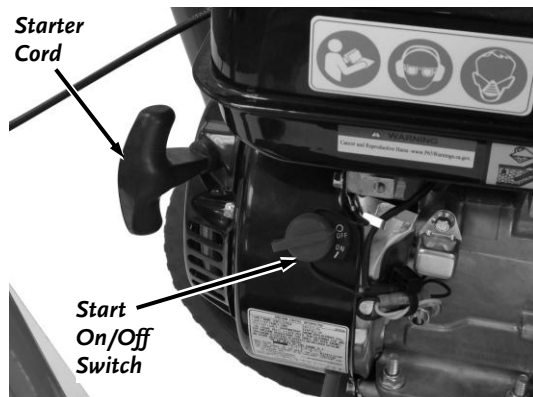


Figure 7

### Starting the Engine

1. Make sure the Fuel Shutoff Lever is in the “ON” position (**Figure 5**).
2. Move the Choke Lever to the left to the choke position (leave in the run position to the right if the engine is already warm).
3. Adjust the Throttle Lever to the halfway position (**Figure 6**).
4. Turn the On/Off Switch to the “ON” position (**Figure 7**).
5. Slowly pull the Starter Cord until you feel resistance, then pull quickly. The Cord will recoil back into position.
6. When the Choke is on, the Engine will soon begin to run rough (**Figure 5**). Adjust the Choke to the right until the engine runs smoother. Continue this process until the engine runs well with the Choke Lever fully in the run position.

**Note:** Ensure that the Choke Lever is always in the right “Run” position for operation.

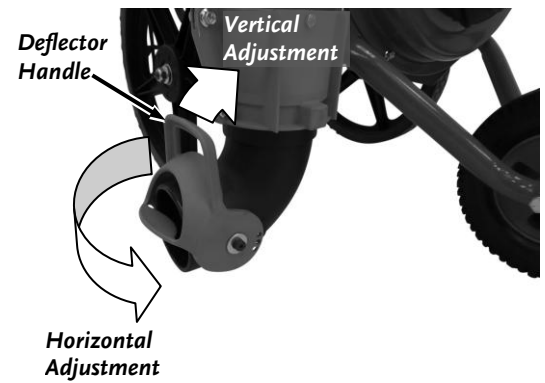
## Stopping the Engine

1. Slowly move the Throttle Lever to the IDLE (Turtle) position (**Figure 6**).
2. Turn the On/Off Switch to the "OFF" position (**Figure 7**).

## Adjusting Air Flow

### Vertical and Horizontal Air Flow Adjustment

1. Use the Handle on the Deflector to change the vertical Air Flow Direction by moving it up and down (**Figure 8**).
2. Use the Handle on the Vertical Deflector to change the horizontal Air Flow Direction by rotating it from side to side.



**Figure 8**

## Operating Safety

### **⚠ WARNING**

- The operation of any WALK BEHIND BLOWER can result in foreign objects being thrown into the eyes, which can result in severe eye damage. Always wear the safety glasses or eye shields before operating the machine.
- Only operate your WALK BEHIND BLOWER from the rear behind the Handlebars. If it is necessary for any reason to inspect or repair any part of the machine where a moving part can come in contact with your body or clothing, stop the engine, allow all parts to cool, disconnect the spark plug wire from the spark plug and move it away from the spark plug before attempting any inspection or repairs.



## Chapter 4: Maintaining the DR® WALK BEHIND BLOWER

Regular maintenance is the way to ensure the best performance and long life of your machine. Please refer to this manual and the engine manufacturer's owner's manual for maintenance procedures. Service intervals listed in the checklist below supersede those listed in the engine manufacturer's owner's manual.

### **⚠ WARNING**

Before performing any maintenance procedure or inspection, stop the engine, wait five minutes to allow all parts to cool. Disconnect the spark plug wire, keeping it away from the spark plug.

### **Regular Maintenance Checklist**

PROCEDURE	BEFORE EACH USE	EVERY 25 HOURS	EVERY 50 HOURS
Check Engine Oil Level	▲		
Check Fuel Level	▲		
Check General Equipment Condition	▲		
Clean Air Filter		▲	
Clean Engine Exterior & Cooling Fins		▲	
Change Engine Oil	1 <sup>st</sup> time 5 hours	▲	
Replace Spark Plug			▲
Replace Air Filter			▲

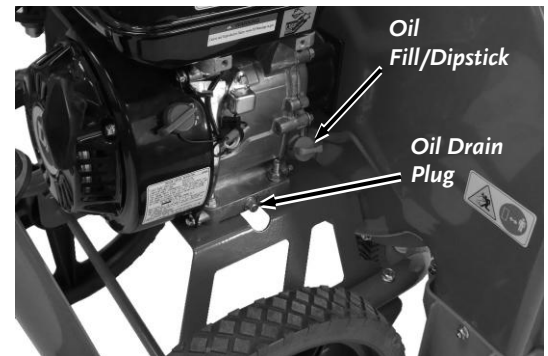
### **Changing Engine Oil**

#### **Tools and Supplies needed:**

- 10mm Wrench
- SAE 30 High Detergent (HD) Oil (for winter use, use SAE 5W – 30W)
- Rag
- Approved Oil Drain Pan

1. Place an approved Oil Drain Pan under the Engine Oil Drain Plug at the side of the machine (**Figure 9**).
2. Using a 10mm Wrench, remove the Oil Drain Plug from the side of the Engine and drain the oil into the Pan.
3. Replace the Plug and refill the oil to as described in “Adding Oil and Gasoline” in Chapter 2.

**Note:** Be sure to use environmentally safe disposal procedures in the disposing of the used oil.



**Figure 9**

## Chapter 5: Troubleshooting

---

Most problems are easy to fix. Consult the Troubleshooting Table below for common problems and their solutions. If you continue to experience problems, contact us at [www.DRpower.com](http://www.DRpower.com) or call toll-free 1-800-DR-OWNER (376-9637) for support.

### ***Troubleshooting Table***

<b>SYMPTOM</b>	<b>POSSIBLE CAUSE; CORRECTIVE ACTION</b>
<i>Engine fails to start</i>	<ul style="list-style-type: none"><li>⇒ Fuel tank empty; Fill tank with clean, fresh fuel.</li><li>⇒ Spark plug wire disconnected; Connect wire to spark plug.</li><li>⇒ Faulty spark plug; Clean, adjust gap or replace the spark plug.</li></ul>
<i>Loss of power, operation erratic</i>	<ul style="list-style-type: none"><li>⇒ Spark plug wire loose; Connect and tighten spark plug wire.</li><li>⇒ Running on “CHOKE”; Move choke lever to “RUN” position.</li><li>⇒ Blocked fuel line or stale fuel; Clean fuel line; fill tank with clean, fresh gasoline.</li><li>⇒ Water or dirt in fuel system; Disconnect fuel line at carburetor to drain fuel tank.</li><li>⇒ Carburetor out of adjustment; Contact us at <a href="http://www.DRpower.com">www.DRpower.com</a> or call 1-800-DR-OWNER (376-9637) for assistance.</li><li>⇒ Dirty air cleaner; Clean or replace air filter.</li></ul>
<i>Engine overheats</i>	<ul style="list-style-type: none"><li>⇒ Carburetor not adjusted properly; Contact us at <a href="http://www.DRpower.com">www.DRpower.com</a> or call 1-800-DR-OWNER (376-9637) for assistance.</li><li>⇒ Engine oil level low; Fill crankcase with proper oil.</li><li>⇒ Internal engine cooling fan not working properly due to debris buildup over engine crank cover; Clean debris away from engine crank cover for improved air circulation.</li></ul>
<i>Excessive vibration.</i>	<ul style="list-style-type: none"><li>⇒ Loose parts or damaged impeller assembly; Stop engine immediately and disconnect spark plug wire. Tighten all bolts &amp; nuts. Make all necessary repairs. If vibration continues, contact us at <a href="http://www.DRpower.com">www.DRpower.com</a> or call 1-800-DR-OWNER (376-9637) for assistance.</li></ul>



## Chapter 6: Parts Lists, Schematic Diagrams

---

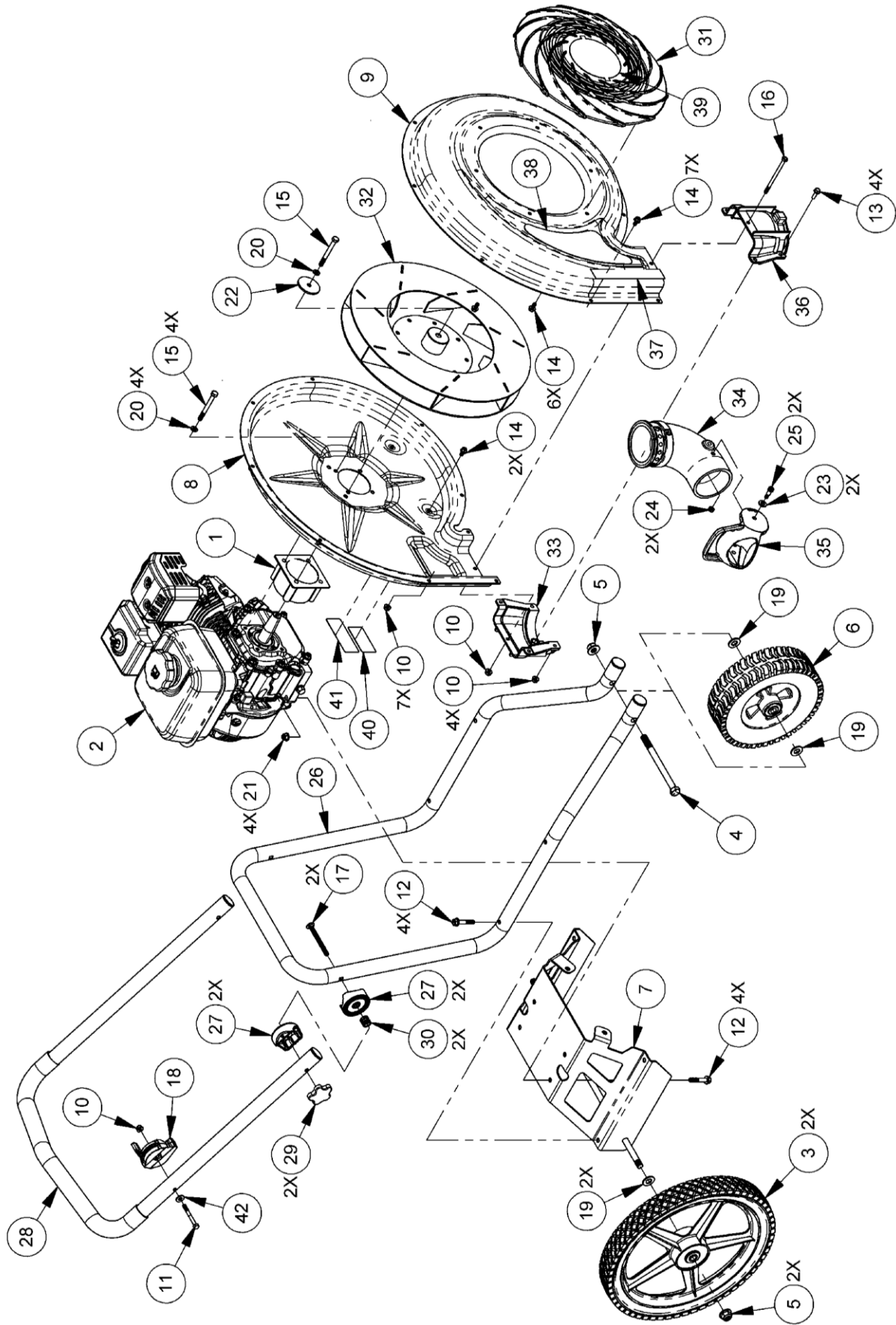
### Parts List – MAIN ASSEMBLY

*Note: Part numbers listed are available through DR Power Equipment.*

<u>Ref#</u>	<u>Part#</u>	<u>Description</u>	<u>Ref#</u>	<u>Part#</u>	<u>Description</u>
1	342401	Spacer, Impeller	23	HW1000S31	Washer, 5/16, Flat, SAE, S/S
2	A0000040488	Engine, DR 9.59 TQ, M/S, 50ST, CE	24	A0000222874	Nut, Nylon Lock, 1/4-20, Thin, ZP
3	312901	Wheel, 16", 5 Spoke	25	A0000222884	Bolt, Shoulder, 5/16 X 1/2", 1/4-20 X 7/16", Steel
4	10000003402	Screw, HHC, 1/2-13 X 6-1/2", G5	26	10000038825	Tube, Lower Body
5	333351	Nut, Nylon Lock, Flanged, 1/2-13	27	A0000032880	Adjuster, Handlebar, 1.25" Tube
6	A0000041350	Wheel, 10" X 2.75", Turf, Black	28	10000038891	Tube, Handle
7	10000038890	Weldment, Main Body	29	311121	Knob, 2.25" Dia., 5/16-18 Insert
8	A0000295743	Housing, Rear Impeller W/ Labels	30	143931	Spring-C .72" OD X .063" Wire X .625"
9	10000038847	Housing, Front Housing	31	10000038836	Cover, Air Intake
10	333311	Nut, Nylon Lock, Flanged, 1/4-20	32	10000038838	Weldment, Impeller
11	111461	Bolt, HCS, 1/4-20 X 2-1/2", GR5, ZP	33	A0000087956	Adapter, Discharge, Premier W/O Detent
12	385991	Bolt, Hex, Flange, 5/16-18 X 1-3/4", GR5, ZP	34	10000039068	Discharge Chute, 90 Degree
13	152501	Screw, 1/4-20 X 3/4", Hex, Flange Head, GR2, ZP	35	10000039077	Deflector, Vertical
14	10000035990	Screw, HHFC, 1/4-20 X 0.5", G5	36	10000039083	Adapter, Discharge
15	350311	Bolt, HCS, 5/16-24 X 3.0", GR8, ZP	37	A0000629432	Label, X12
16	10000047878	Bolt, 1/4-20 X 4", GR5 ZP	38	A0000203143	Label, 1150 CFM, 200 Mph
17	A0000222872	Bolt, Carriage, 5/16-18 x 3-1/2", ZP	39	A0000215817	Label, DR Logo, 4.5", Red
18	143971	Cable, Throttle	40	A0000256673	Label, Discharge
19	234991	Washer, SAE Flat, 1/2", ZP	41	A0000256659	Label, General Safety
20	350321	Washer, Lock, 5/16, GR8 Split, ZP	42	112381	Washer, Flat, 1/4", USS
21	333321	Nut, Nylon Lock, Flanged, 5/16-18			
22	321221	Washer, 5/16" ID, 2.0" OD, 0.13"T			



**Schematic – MAIN ASSEMBLY**





# DR<sup>®</sup> WALK BEHIND BLOWER



## 2-Year Limited Warranty

### Terms and Conditions

The DR<sup>®</sup> WALK BEHIND BLOWER is warranted for two (2) years against defects in materials or workmanship when put to ordinary and normal consumer use; ninety (90) days for any other use.

For the purposes of all the above warranties, “ordinary and normal consumer use” refers to non-commercial residential use and does not include misuse, accidents or damage due to inadequate maintenance.

DR Power Equipment certifies that the DR<sup>®</sup> WALK BEHIND BLOWER is fit for ordinary purposes for which a product of this type is used. DR Power Equipment however, limits the implied warranties of merchantability and fitness in duration to a period of two (2) years in consumer use, ninety (90) days for any other use.

The 2-Year Limited Warranty on the DR<sup>®</sup> WALK BEHIND BLOWER starts on the date the machine ships from our factory. The 2-Year Limited Warranty is applicable only to the original owner.

The warranty holder is responsible for the performance of the required maintenance as defined by the manufacturer's owner's manuals. The warranty holder is responsible for replacement of normally wearing parts such as the Filters , and Spark Plug. Accessories to the machine are not covered by this warranty.

During the warranty period, the warranty holder is responsible for the machine transportation charges, if required. During the warranty period, warranty parts will be shipped by standard method at no charge to the warranty holder. Expedited shipping of warranty parts is the responsibility of the warranty holder.

SOME STATES DO NOT ALLOW LIMITATIONS ON THE LENGTH OF IMPLIED WARRANTIES, SO THE ABOVE LIMITATIONS MAY NOT APPLY TO YOU.

DR Power Equipment shall not be liable under any circumstances for any **incidental or consequential damages or expenses** of any kind, including, but not limited to, cost of equipment rentals, loss of profit, or cost of hiring services to perform tasks normally performed by the DR<sup>®</sup> WALK BEHIND BLOWER.

SOME STATES DO NOT ALLOW THE EXCLUSION OR LIMITATION OF INCIDENTAL OR CONSEQUENTIAL DAMAGES, SO THE ABOVE LIMITATIONS MAY NOT APPLY TO YOU.

THIS WARRANTY GIVES YOU SPECIFIC LEGAL RIGHTS, AND YOU ALSO HAVE OTHER RIGHTS, WHICH VARY FROM STATE TO STATE.

## Daily Checklist for the DR WALK BEHIND BLOWER

To help maintain your DR WALK BEHIND BLOWER for optimum performance, we recommend you follow this checklist each time you use your machine.

---

### WARNING

Before performing any maintenance procedure or inspection, stop the engine, wait five minutes to allow all parts to cool. Disconnect the spark plug wire, keeping it away from the spark plug.

---

- Check the engine oil level.
- Check Fuel Level
- Check the general condition of the machine, e.g.; nuts, bolts, welds, etc.
- Check and clean Engine Fins and controls of Debris.

## End of Season and Storage

---

### WARNING

Before performing any maintenance procedure or inspection, stop the engine, wait five minutes to allow all parts to cool. Disconnect the spark plug wire, keeping it away from the spark plug.

---

- If your machine will be idle for more than 30 days, we recommend using a gas stabilizer. This will prevent sediment from gumming up the Carburetor. If there is dirt or moisture in the gas or tank, remove it by draining the tank. Completely fill the tank with fresh, unleaded gas and add the appropriate amount of stabilizer or gasoline additive. Run the Engine for a short time to allow the additive to circulate.
- Change Engine Oil.
- Clean dirt and debris from the Cylinder Head Cooling Fins and Muffler area of the Engine.
- Remove the Spark Plug and pour about 1 ounce of motor oil into the Cylinder hole. Replace the Plug and pull the Recoil Starter Rope until you feel strong resistance. This will coat the piston and seat the valves to prevent moisture buildup.
- Clean or replace the Air Filter.
- Clean the exterior of the unit to remove all dirt, grease, and any other foreign material. To prevent rust, touch up painted surfaces that have been scratched or chipped.
- If possible, store the machine in a dry, protected place. If it is necessary to store the machine outside, cover it with a protective material (especially the Engine and Housing).



---

800 HINESBURG ROAD, SOUTH BURLINGTON, VERMONT 05403