

DR[®] POWERWAGON[™]

Parts List and Assembly Diagrams



Important!

Please read the Safety & Operating Instructions and the separate Engine Manufacturer's Owner's Manual to become familiar with the basic features of the DR[®] POWERWAGON[™] before operating it.

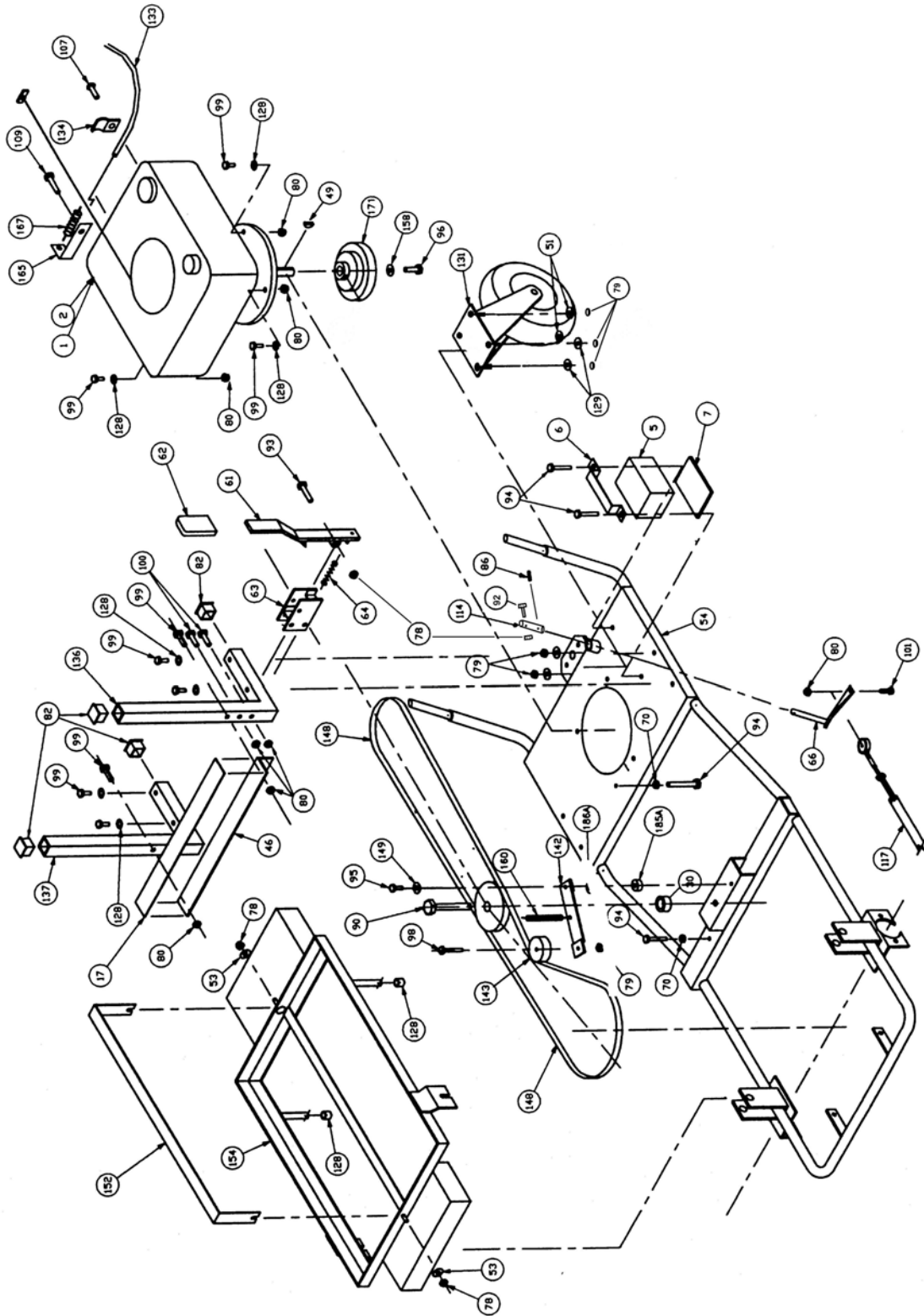
DR[®] POWERWAGON™ “PRO” Parts List

Note: Not all parts appear on all diagrams.

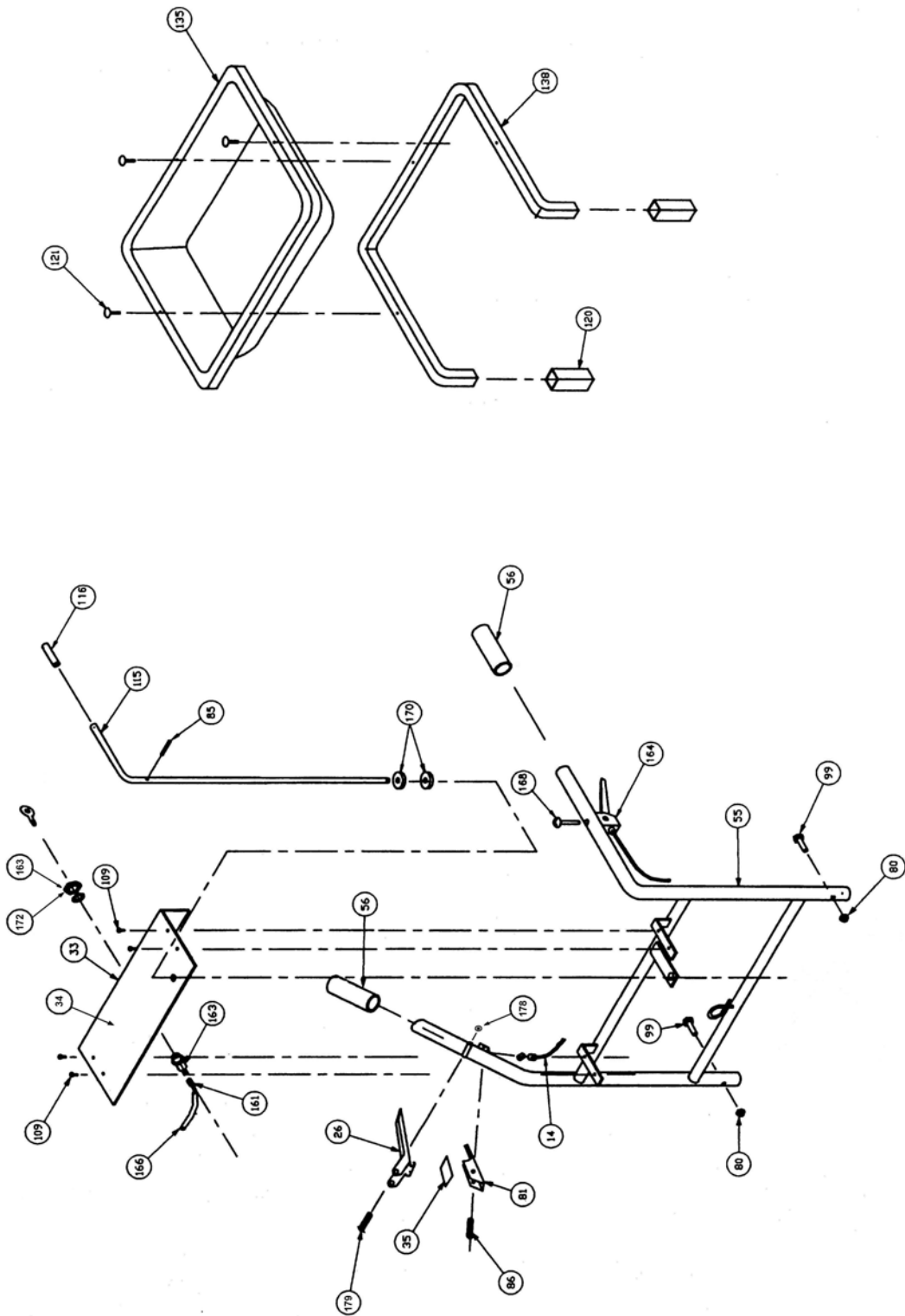
Ref#	Part#	Description	Ref#	Part#	Description
1	160131	Engine, 6.75 hp. Electric Start Briggs & Stratton	55	110361	Handlebar
2	160121	Engine, 6.75 hp. Manual Start Briggs and Stratton	56a	164951	Grip, ergonomic 1" handlebar
3	108921	Bearing Flange, 2-hole	56b	164961	Grip, plain 1" handlebar
4	152171	Ball Bearing, 3/4" Bore	58	106401	Key, Woodruff, 3/16 x 1-1/2
5	131191	Battery	61	110301	Latch Handle
6	135101	Battery Clamp, Plastic	62	110241	Latch Handle Grip
7	113051	Battery Pad	63	110451	Latch Housing
12	151181	Bracket, Brake	64	111931	Latch Spring, 2-1/4"
14	160501	Brake Cable Assy. w/ Spring, 69"	65	109241	Left Corner Bracket
16	109341	Bumper Stop, Flat Bed	66	111291	Lower Shift Rod w/ Arm
17	164101	Bumper Strip, Flat Bed	70	110701	Nut, Clutch Pin, 1/4"-20
18	112141	Cable Tie, 6", Black	73	110681	Nut, Clutch, Zinc, 10-32
19	109131	Carriage Bolt, 5/16" x 1-1/2"	78	110731	Lock Nut, Nylon, 1/4"
26	110281	Handle, Brake/Clutch	79	110751	Lock Nut, Nylon, 3/8-16
30	109621	Collar, 1/2	80	110761	Lock Nut, Nylon, 5/16"-18
33	110841	Control Panel, Sub Assembly	81	110571	Assembly, Parking Brake Latch w/ Label
34	160531	Control Panel Label	81	153691	Parking Brake Latch
35	109831	Parking Brake Label	82	111081	Plug, 1" Square Tubing
36	112161	Drive Wheel, 16/6.50 x 8 Turf	83	109251	Bracket, Right Corner
37	112561	Drive Wheel, 16/6.50 x 8 All-Terrain	85	110971	Roll Pin, Shift Lever, 3/16 x 1-3/4"
44	110101	Flat Bed Frame	86	110961	Roll Pin, Brake, 3/16 x 1"
45	110431	Flat Bed Headboard	87	111531	Bolt, HHCS, 3/8-16 x 2-1/4"
46	108731	Flat Bed Stop Angle	90	111441	Bolt HHCS, 1/2-13 x 2"
47	108771	Dump Arm	91	111501	Bolt, HHCS, 1/4-28 x 3/4"
48	109401	Dump Arm Spacer Tube/Bushings	92	160861	Bolt, HHCS, 1/4-20 x 1-1/4"
49	106381	Flat Key, 3/16 Sq. x 1-1/2	93	111481	Bolt, HHCS, 1/4-20 x 1-3/4"
50	112521	Nylon Shim Washer, Drive Wheel, total quantity- 4	94	111461	Bolt, HHCS, 1/4-20 x 2-1/2"
50	160521	160521 Shim, 3/4 ID x 1 OD x .25 THK, total quantity-4	95	111491	Bolt, HHCS, 1/4-20 x 1"
51	112411	Flat Washer, Zinc, 5/16", USS	96	111551	Bolt, HHCS, 3/8-24 x 3/4"
52	112371	Flat Washer, Shift & Arm, 3/16", 1/4 ID (10-24 USS)	98	119851	Bolt, HHCS, 3/8-16 x 1-1/2"
53	112381	Flat Washer, T.A Hangers, 1/4", 5/16 ID (1/4 USS)	99	134431	Bolt, HHCS, 5/16-18 x 1-1/2"
54	110141	Frame	100	150451	Bolt, HHCS, 5/16-18 x 1-3/4"
			101	123361	Bolt, HHCS, 5/16-18 x 1-1/4"
			102	111591	Bolt, HHCS, 5/16-18 x 2-1/2"
			104	150491	Screw, 8-32 x 1/2

Ref#	Part#	Description	Ref#	Part#	Description
106	111321	Bolt, HHCS, 5/16-18 x 4", Stake Body	155	100071	Large Molded Bed (Undrilled)
109	111701	Screw, 10-32 x 1/2"	155	124561	Large Molded Bed (Drilled)
110	111661	Screw, Phillips, Pan, #12 x 1"	157	123211	Bolt, HHCS, 5/16-18 x 3/4"
111	111641	Screw, Phillips, Self Tap, #10 x 1-1/4"	158	112391	Flat Washer, 3/8", USS
112	111651	Screw, Phillips, Flat, #12 x 1-1/2"	159	112531	Weight Block 4 x 8 x 16
114	160871	Shift Axle Coupling	160	111921	Spring, Idler Arm
115	108871	Shift Lever	161	178941	Wire Harness, manual
116	110221	Handle Grip, Shift Lever, 1/2" x 4"	162	178951	Wire Harness, electric
117	160351	Tie Rod Assembly	163	112051	Key Switch w/ Hardware & Elec. Key, ES
120	112341	Tubing, Shrink	164	112121	Throttle Cable, 43"
121	111271	Push Rivet, Tool Tray, 1/4"	165	160461	Throttle Spring Bracket
123	110991	Side Pin w/ Spring Button	167	120891	Spring, Throttle Return
124	110981	Side Pin w/o Spring Button	168	111631	Screw, Pan, Zinc, Throttle Handle, 10-32 x 1-1/2"
126	112311	Spacer Tube for Latch Pin	169	109491	Caps for 3/4 Round Tubing
127	111911	Spring Buttons, Side Pins	170	112441	Nylon Washer, 1/2 ID x 3/4 OD x 12
128	112501	Star Lock Washer, 5/16"	171	109601	Centrifugal Clutch w/ Pulley
129	121701	Washer, Flat, 3/8" SAE	172	112061	Key Switch w/ Hardware & Key, MS
131	112581	Swivel Wheel, 4.10 / 3.50 x 4	175	143311	Plywood Floor, 5/8"
132	111721	Thread Forming Screw, 5/16-18 x 3/4"	176	112461	Nylon Washer, .39 ID x 1 OD
135	112261	Tool Tray, 15" x 18" x 4-1/2"	177	109411	Bushing, .265 ID x .375 OD
135	112271	Assembly, Tool Tray	178	150861	Nut, Push, 3/16 Washer Cap
136	136601	Tool Tray Frame Leg	179	151411	Pin, Clevis, 3/16 x 1-3/4
137	136601	Tool Tray Frame Leg			
138	110151	Tool Tray Frame			
139	108891	Transaxle Front Hangers	136191		Parts Bag, Molded Bed
140	108791	Transaxle Shift Arm	125021		Parts Bag, PRO Model
141	178931	Transaxle, Assembly	124371		Label, American Flag
142	136621	Idler Arm	153421		Label, Dump Lever
143	113071	Idler Pulley, Flat, 2-1/4"	153431		Label, Dump Lever Latch
144	111141	V-Belt, Drive Pulley, 7"	153601		Label, ID and Serial Number
146	111161	V-Belt, Idler Pulley, 4"	153441		Label, Slope Limit
148	108971	V-Belt, Drive, 1/2" x 84" (4L840)	153451		Label, Throttle Control
149	126971	Fender Washer, 1/4" x 1"	127811		Label, Warning, Add Oil
150	111261	Wheel Lock Ring, 3/4"	180	178921	Handle, Op / switch (not shown)
152	111991	Weight Rack Block Strap	181	178961	Wire harness / Op presence (not shown)
154	111201	Weight Rack w/ Belt Guard	182	164971	Guard, switch, Magura

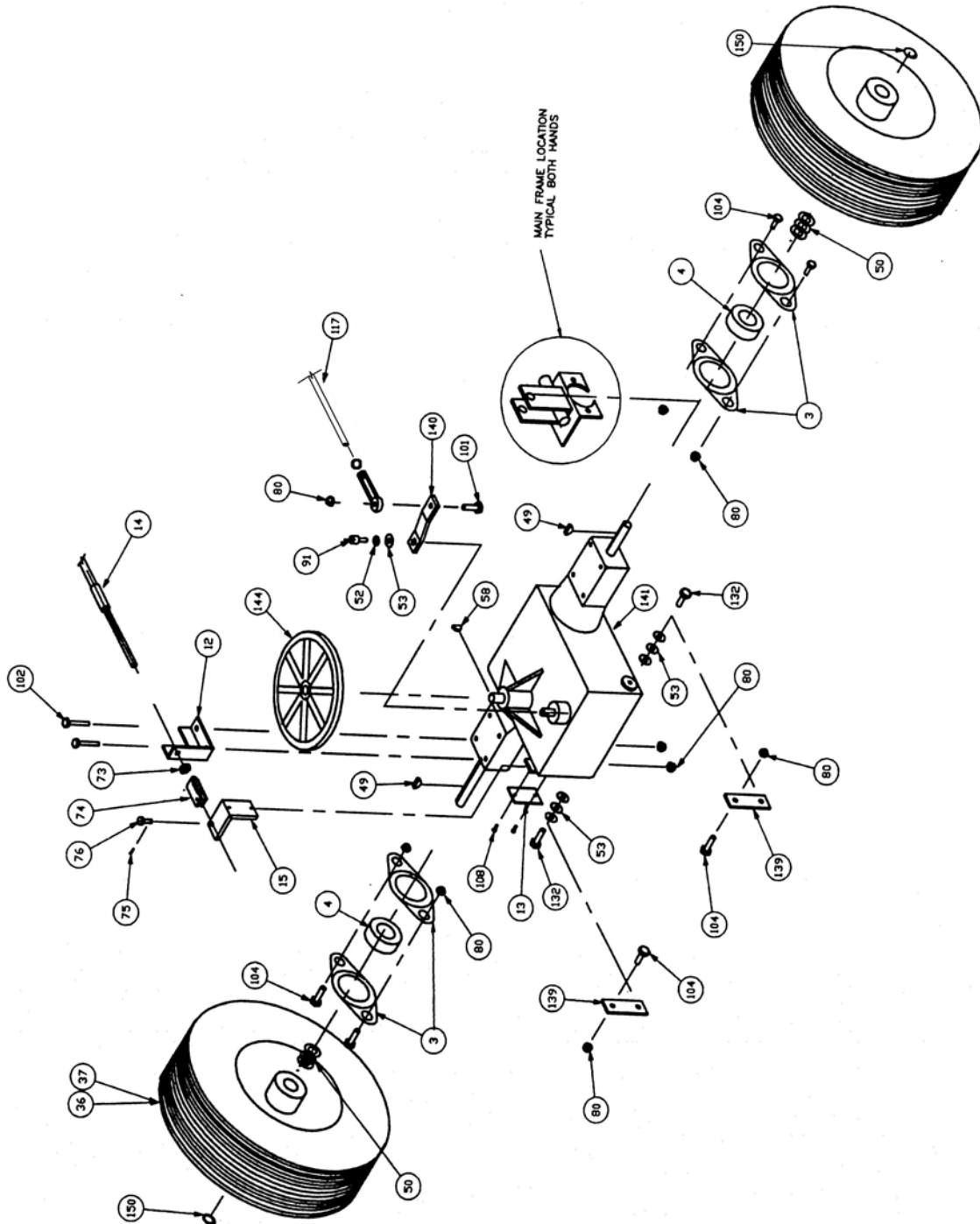
Main Frame Assembly



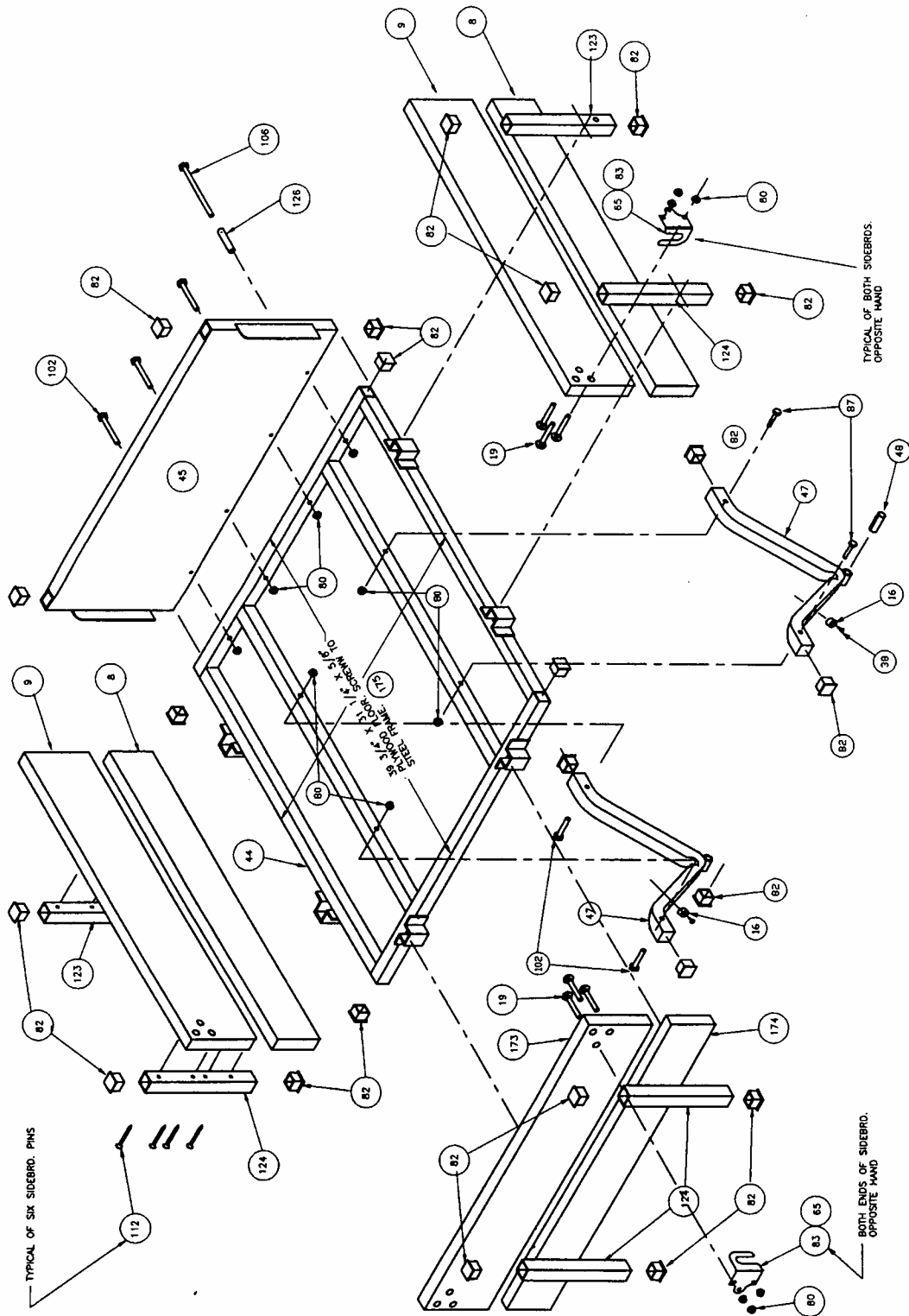
Handlebar/Controls Assembly



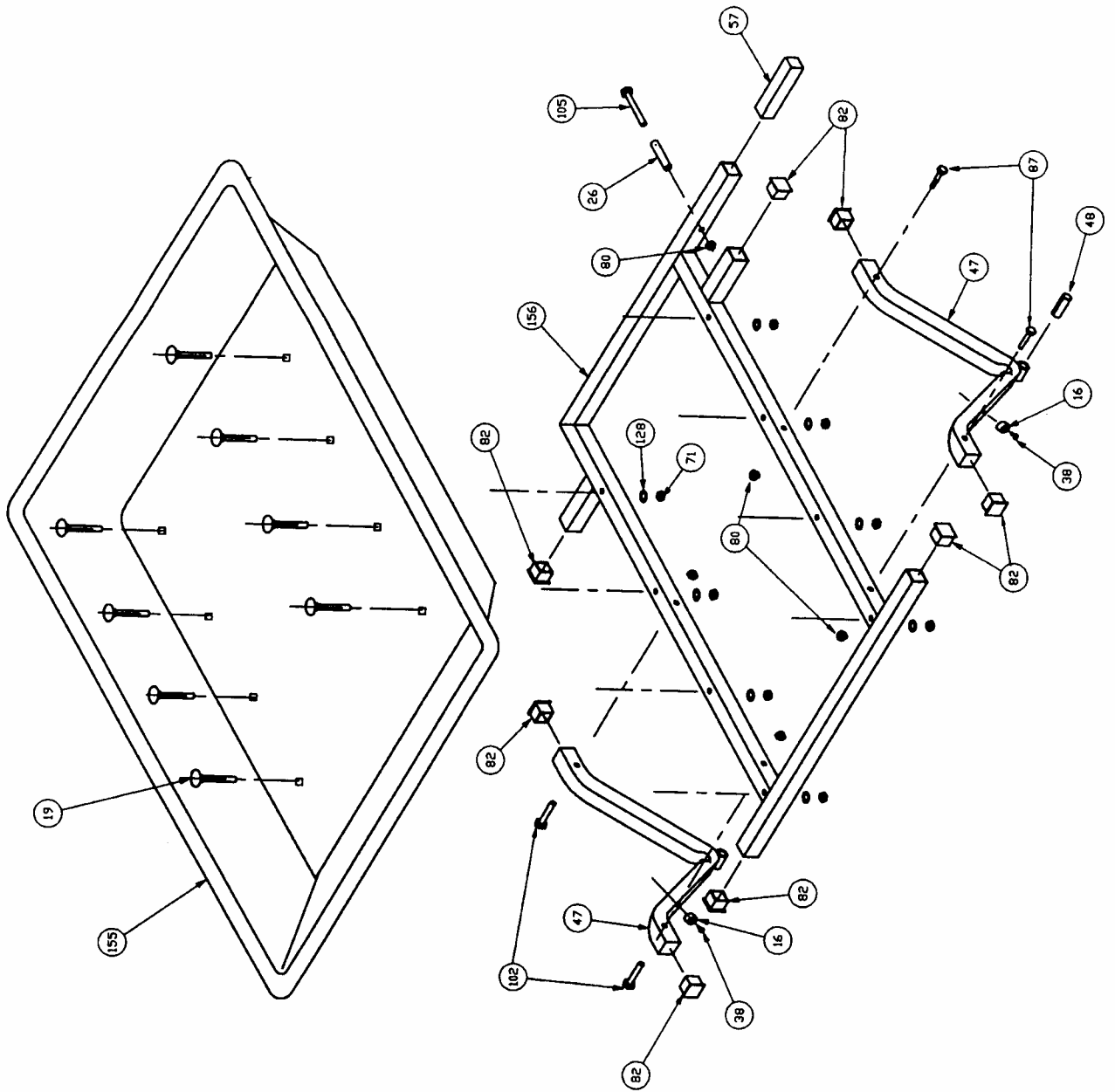
Main Axle Assembly



Stake Body Assembly



Molded Body Assembly



Country Home Products, Inc.'s operates a 6-day-a-week Technical Service Department for our Owners. You can access a Representative by dialing our TOLL-FREE Hotline at 1-800-DR-OWNER (376-9637). The sole job of our well-trained and friendly folks is to ensure that you get any help you need in a timely fashion. They are there to answer all your questions including inquiries about replacement parts, parts orders, or your questions regarding service, maintenance and operation.



COUNTRY HOME PRODUCTS, Inc.
Meigs Road, P.O. Box 25, Vergennes, Vermont 05491
1-800-DR-OWNER(376-9637) • www.dr-owner.com

©2002 CHP, Inc. 164191